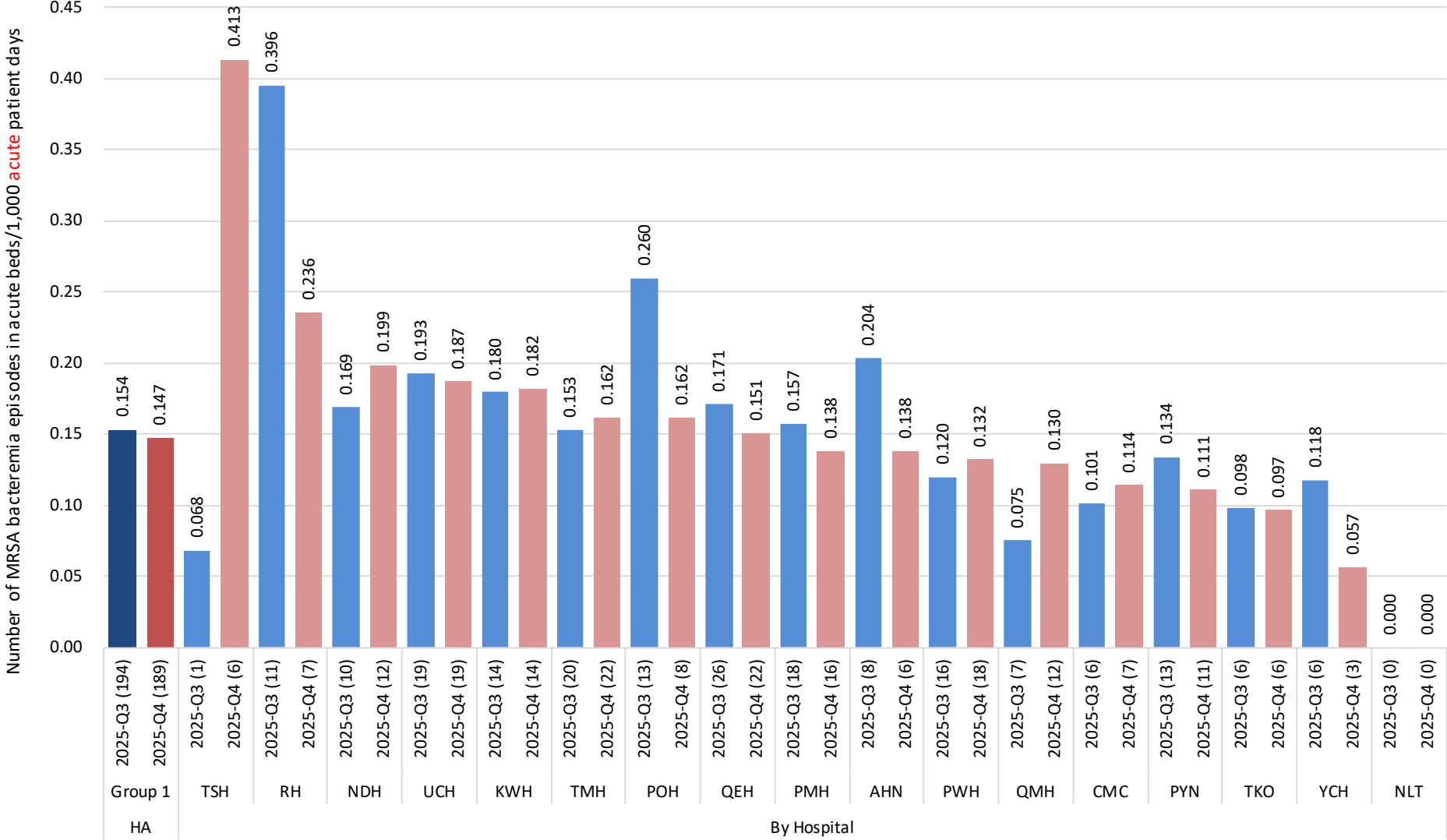


MRSA Bacteremia in HA Hospitals – 2025-Q3 & 2025-Q4

Hospital Authority, HKSAR

Data source: CDARS - MRSA statistics from MRSA Surveillance System

MRSA bacteremia in acute beds in HA group 1 hospitals - 2025-Q3 & 2025-Q4

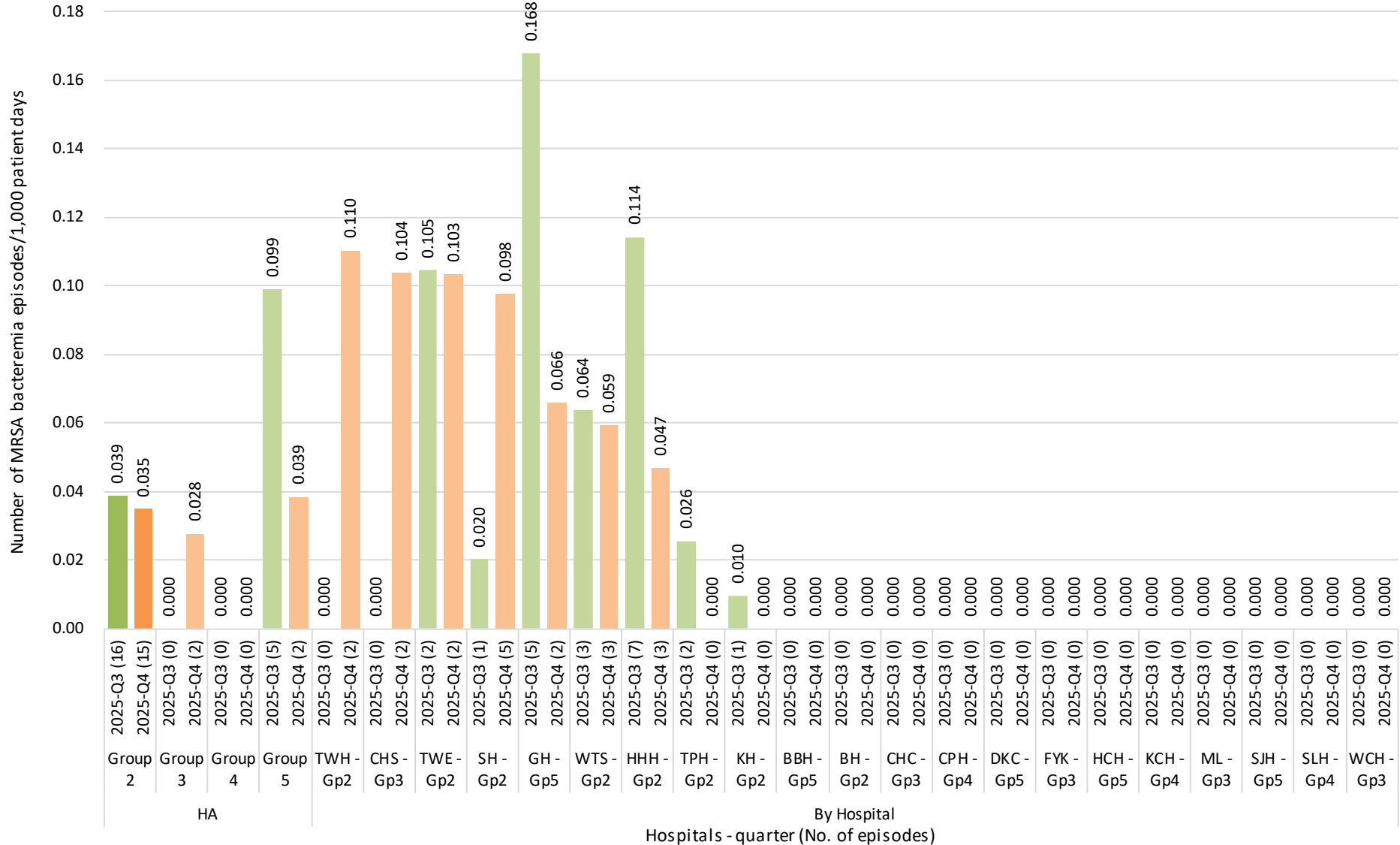


Hospitals - quarter (No. of episodes)

Data source: MRSA Surveillance System (CDARS)

Remark: Hospitals ordered by rate in 2025-Q4 (descending), then by rate in 2025-Q3 (descending)

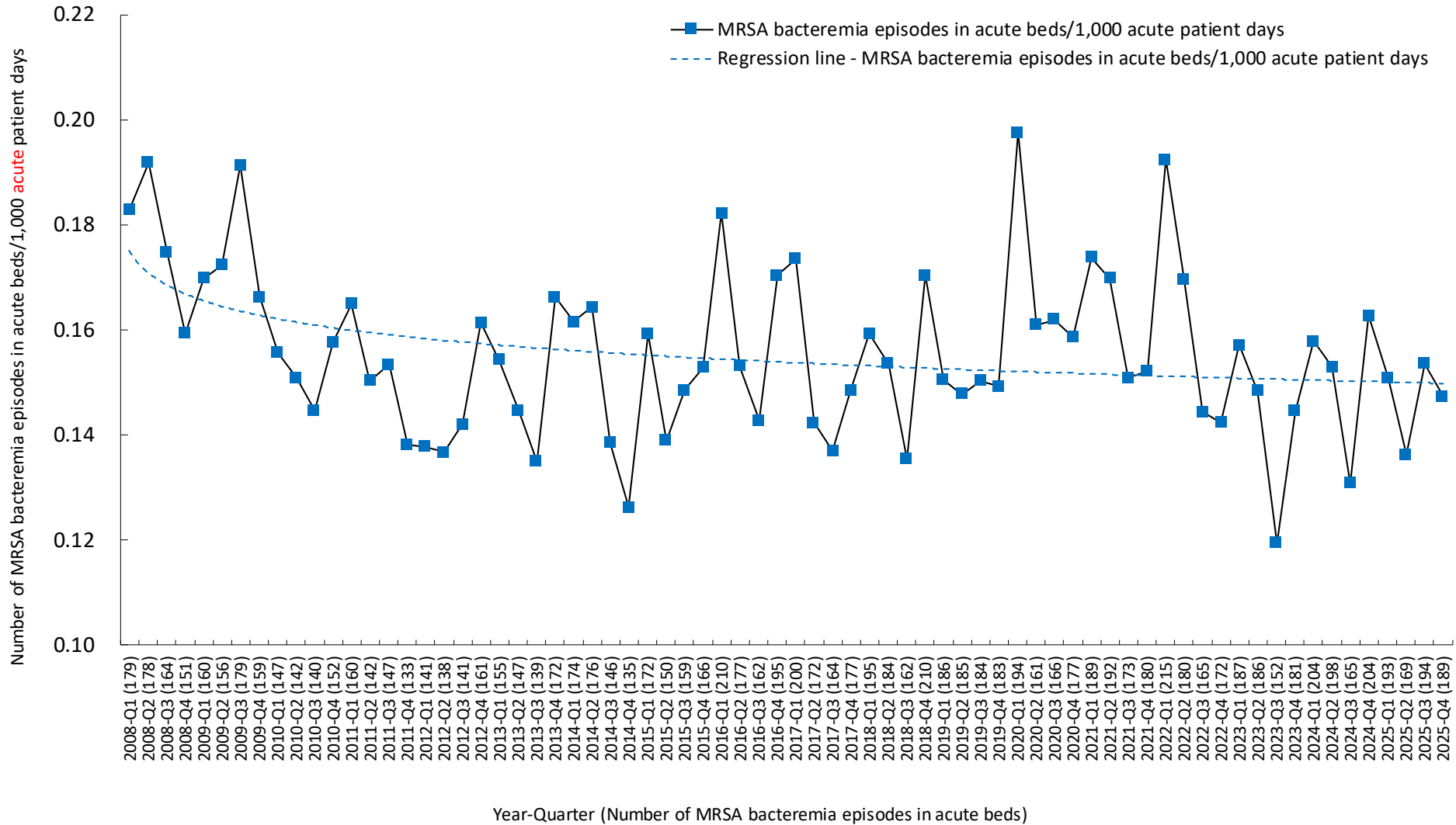
MRSA bacteremia in HA non-group 1 hospitals - 2025-Q3 & 2025-Q4



Data source: MRSA Surveillance System (CDARS)

Remark: Hospitals ordered by rate in 2025-Q4 (descending), then by rate in 2025-Q3 (descending)

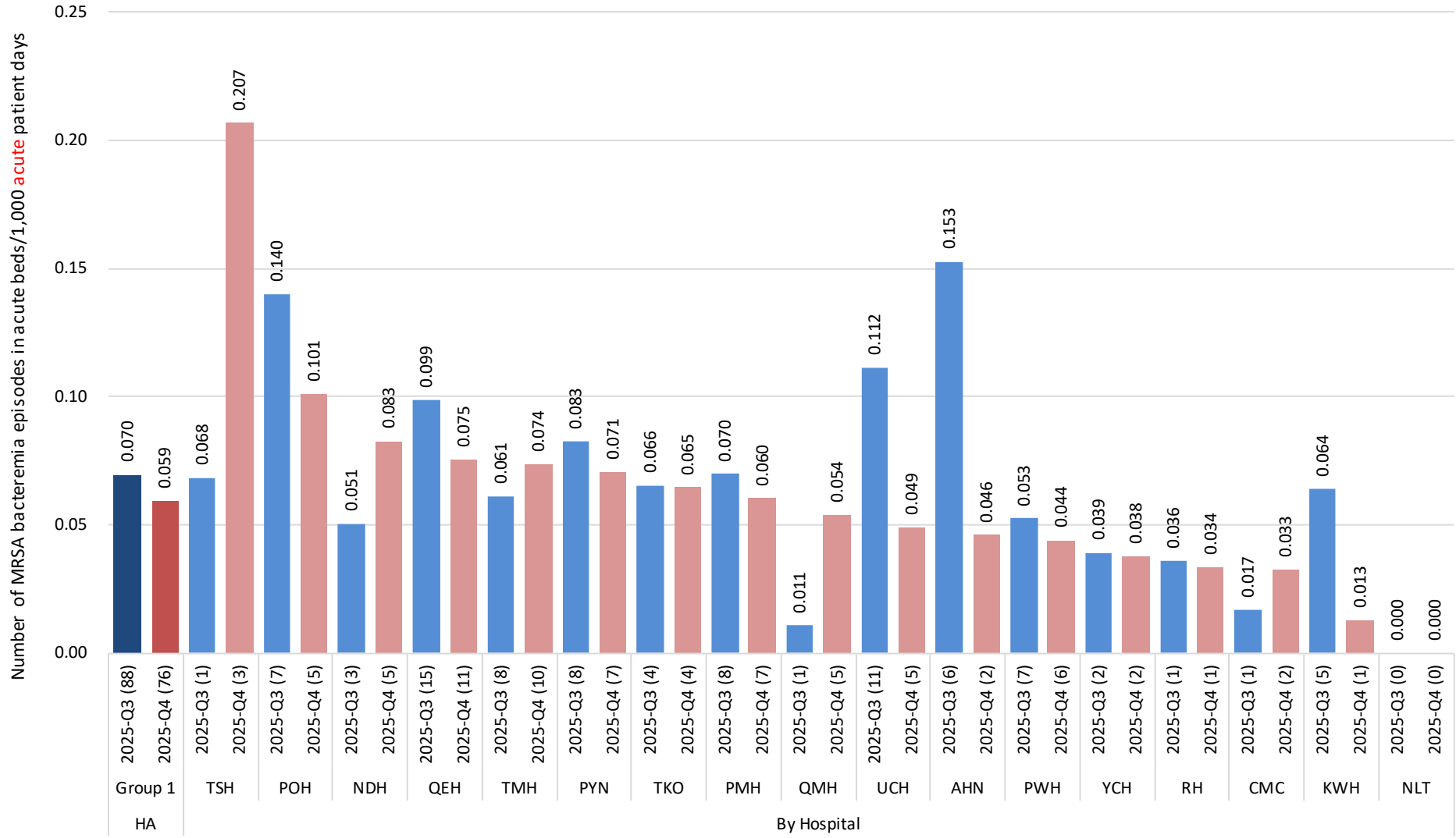
MRSA bacteremia in acute beds in HA group 1 hospitals since 2008



Year-Quarter (Number of MRSA bacteremia episodes in acute beds)

Data source: MRSA Surveillance System(CDARS)

MRSA bacteremia in acute beds detected after 48 hours of admission in HA group 1 hospitals - 2025-Q3 & 2025-Q4

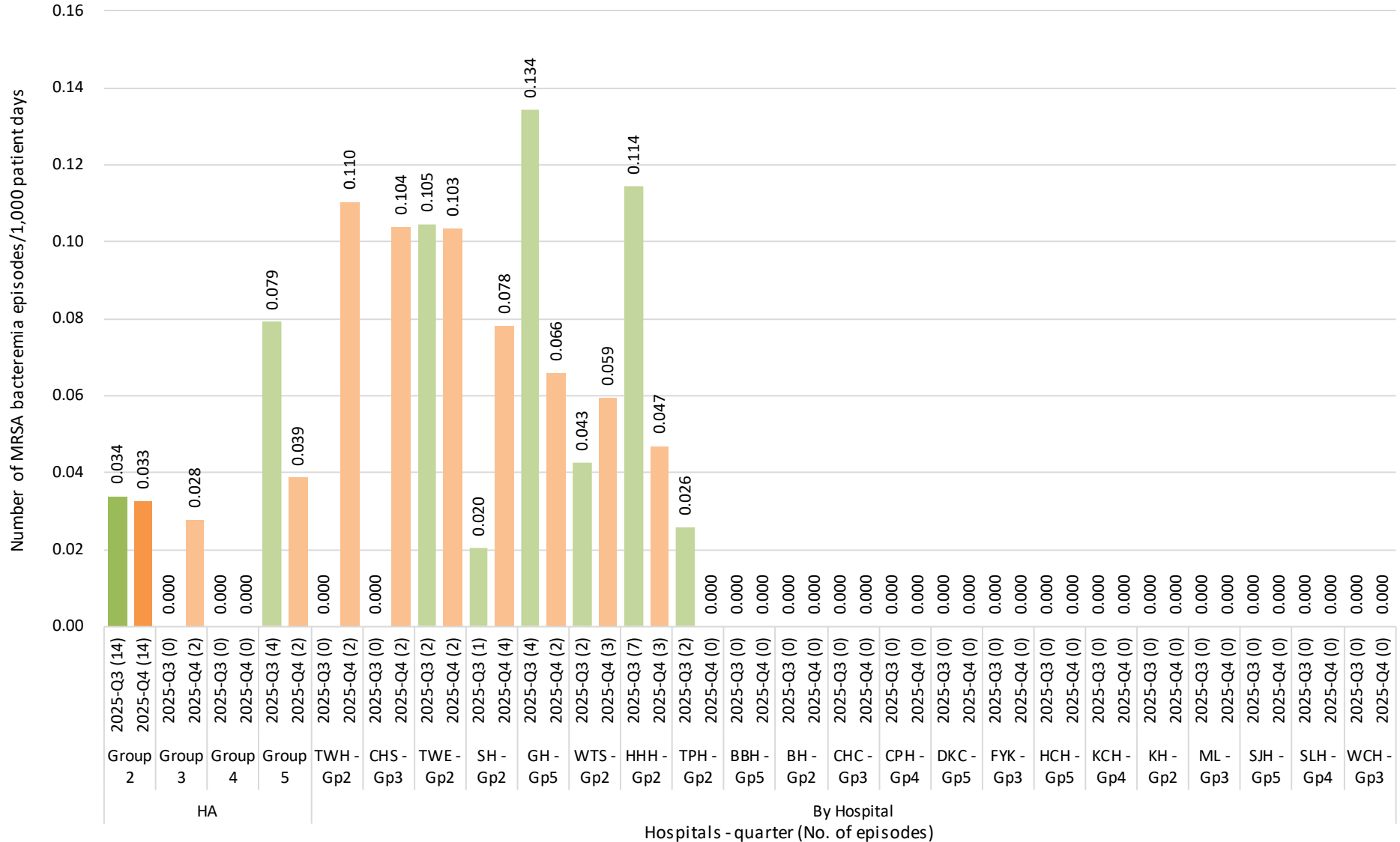


Hospitals - quarter (No. of episodes)

Data source: MRSA Surveillance System (CDARS)

Remark: Hospitals ordered by rate in 2025-Q4 (descending), then by rate in 2025-Q3 (descending)

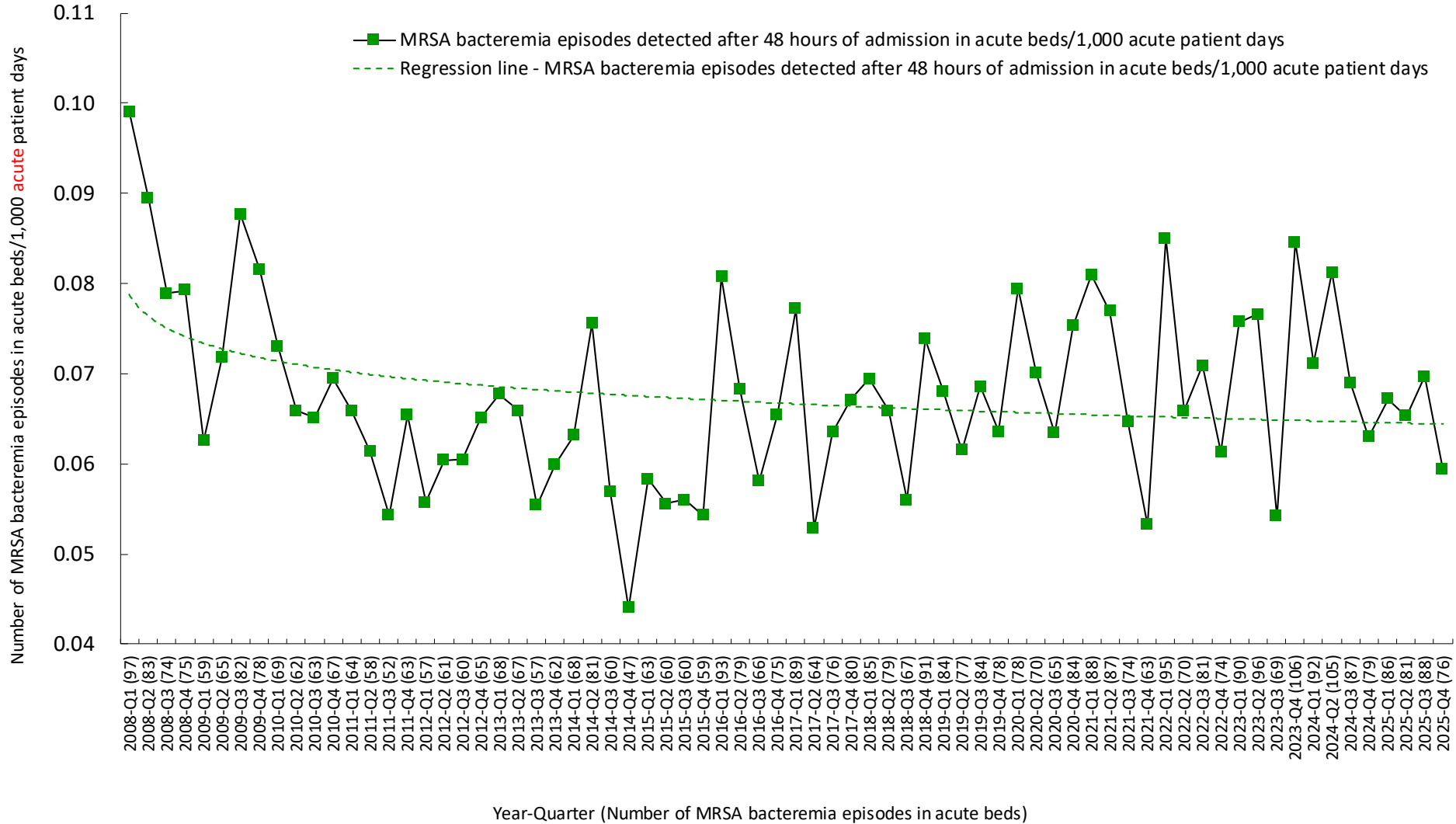
MRSA bacteremia detected after 48 hours of admission in HA non-group 1 hospitals - 2025-Q3 & 2025-Q4



Data source: MRSA Surveillance System (CDARS)

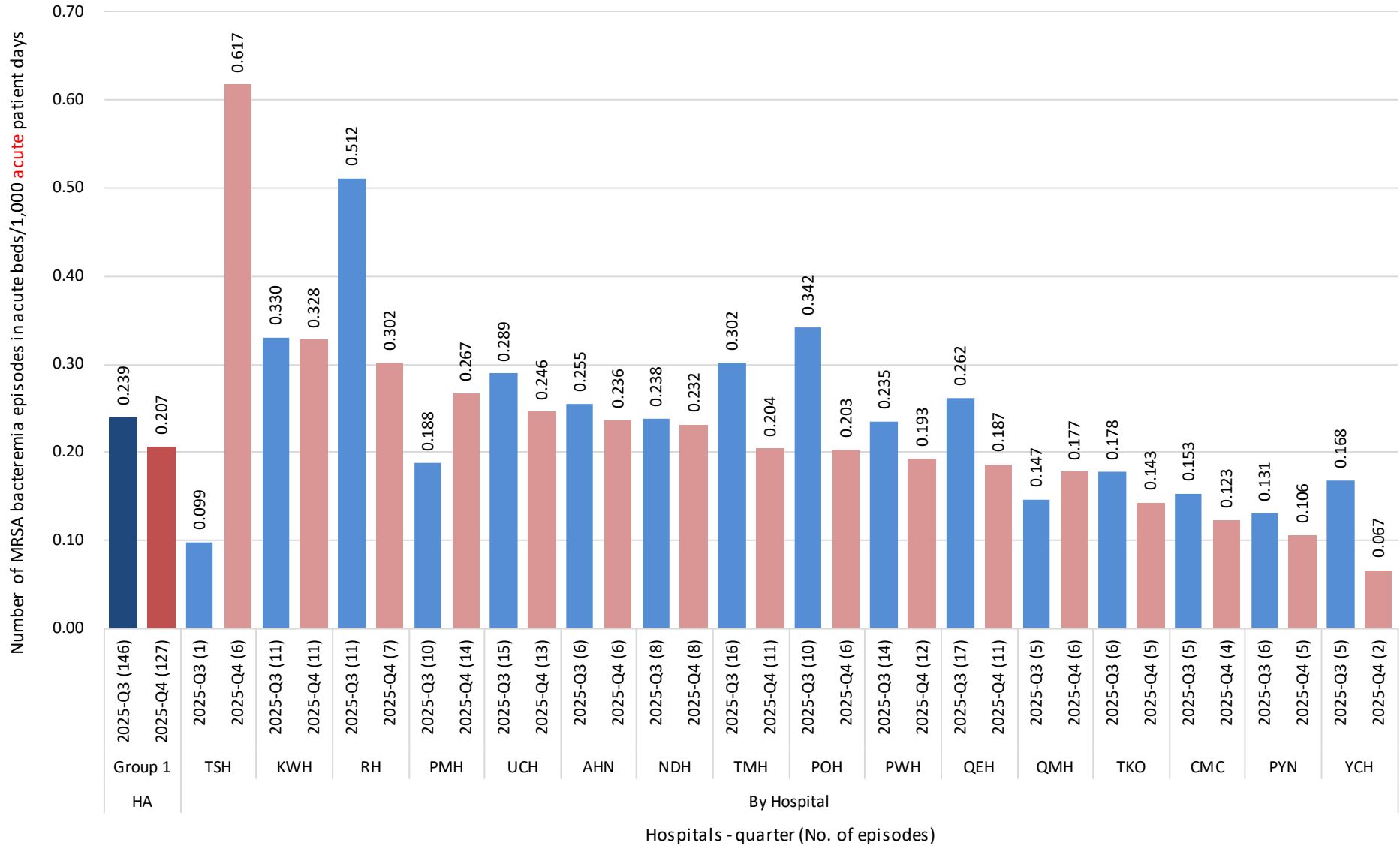
Remark: Hospitals ordered by rate in 2025-Q4 (descending), then by rate in 2025-Q3 (descending)

MRSA bacteremia detected after 48 hours of admission in acute beds in HA group 1 hospitals since 2008



Data source: MRSA Surveillance System(CDARS)

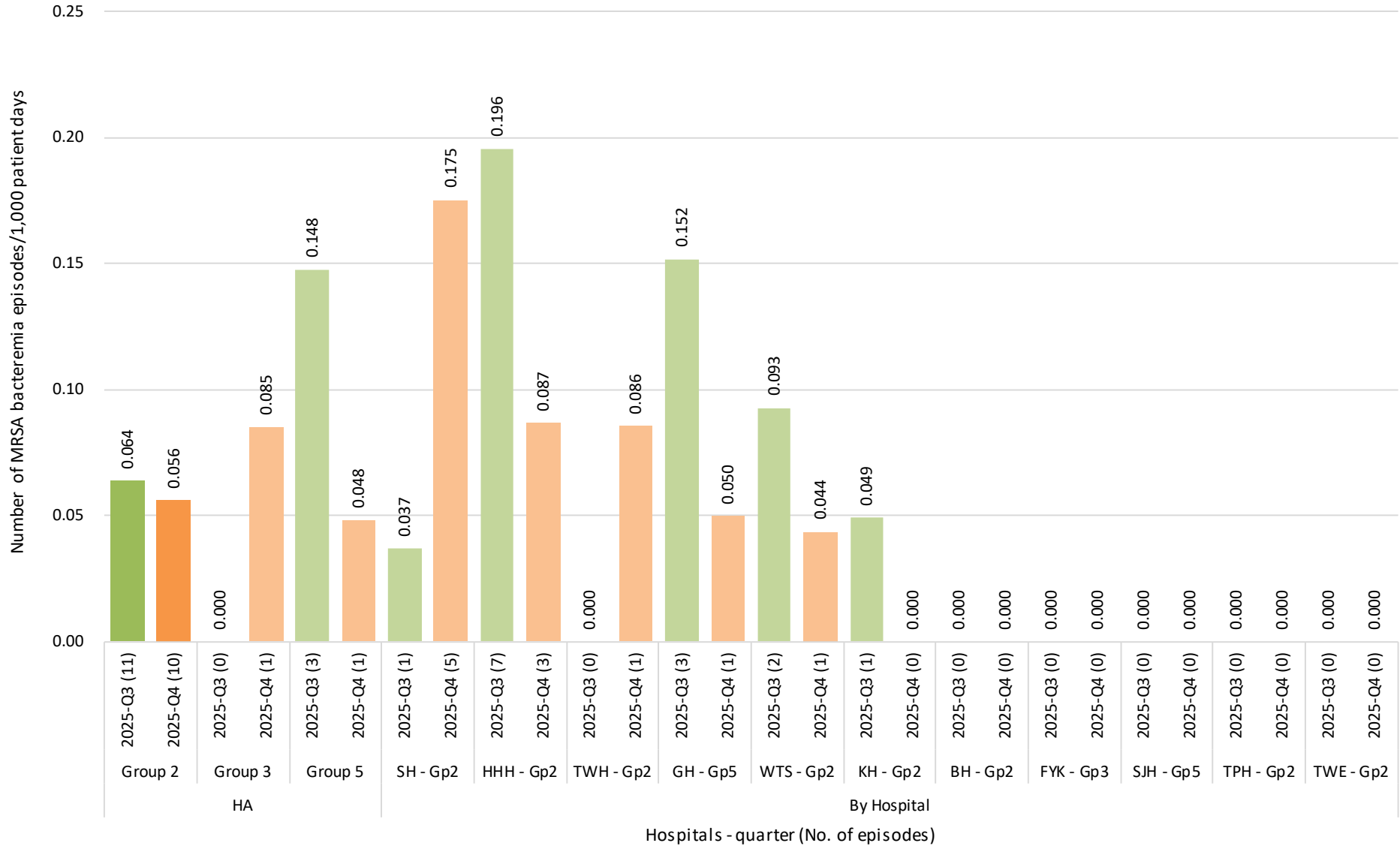
MRSA bacteremia in acute beds in HA group 1 hospitals - MED department- 2025-Q3 & 2025-Q4



Data source: MRSA Surveillance System (CDARS)

Remark: Hospitals ordered by rate in 2025-Q4 (descending), then by rate in 2025-Q3 (descending)

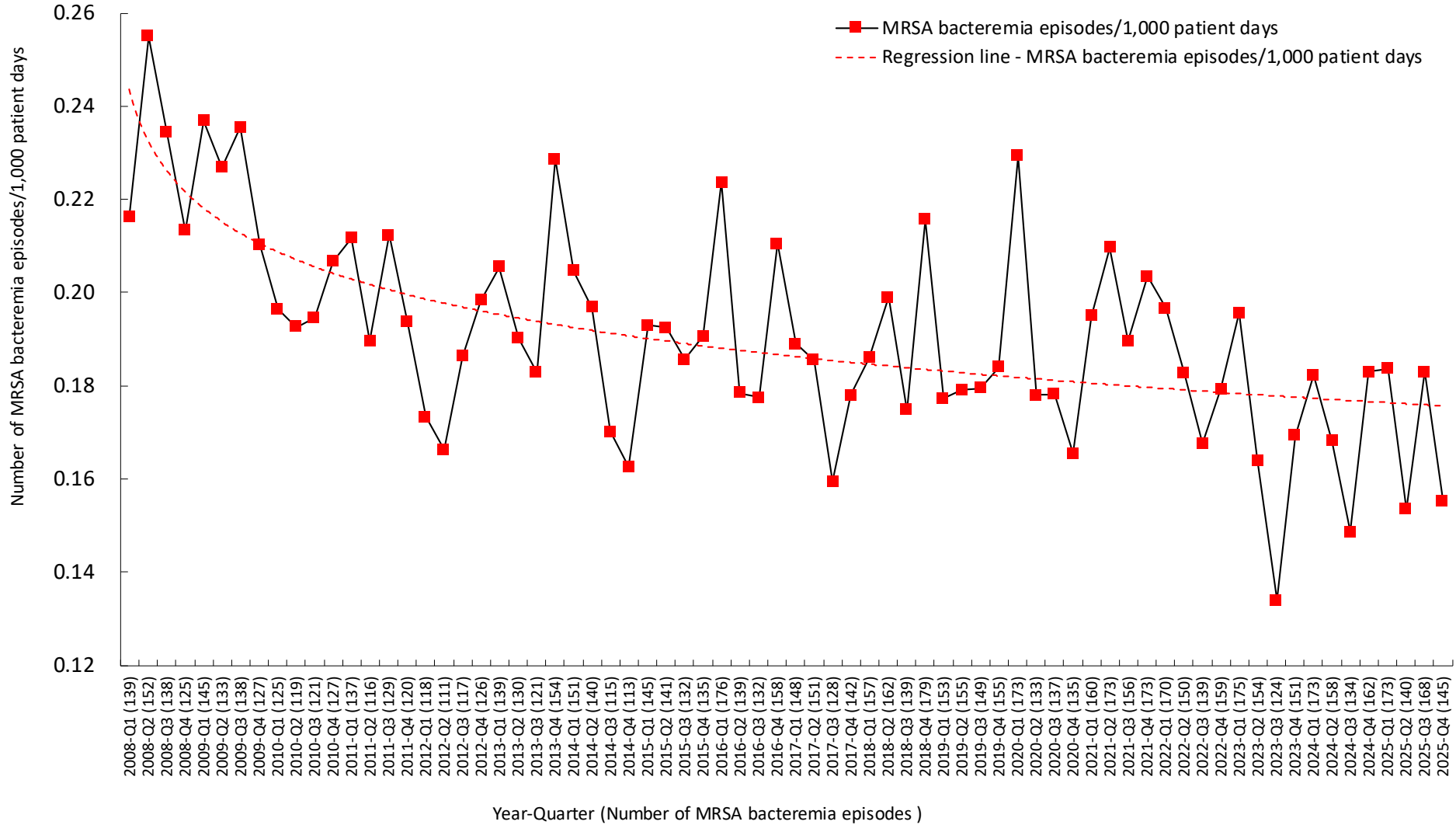
MRSA bacteremia in HA non-group 1 hospitals - MED department - 2025-Q3 & 2025-Q4



Data source: MRSA Surveillance System (CDARS)

Remark: Hospitals ordered by rate in 2025-Q4 (descending), then by rate in 2025-Q3 (descending)

MRSA bacteremia in HA hospitals - MED department since 2008



Data source: MRSA Surveillance System(CDARS)

Appendix I: Definition

- MRSA bacteremia is defined as isolation of MRSA from blood cultures;
- Duplicate positive cultures within a two-week period from the same patient should be regarded as a single episode.

Appendix II: Hospital Code & Hospital Name

| HA Group 1 Hospitals | | HA Non-group 1 Hospitals | |
|-----------------------------|--|---------------------------------|--|
| Hospital Code | Hospital Name | Hospital Code | Hospital Name |
| AHN | Alice Ho Miu Ling Nethersole Hospital | BBH | Bradbury Hospice |
| CMC | Caritas Medical Centre | BH | Hong Kong Buddhist Hospital |
| KWH | Kwong Wah Hospital | CHC | Cheshire Home, Chung Hum Kok |
| NDH | North District Hospital | CHS | Cheshire Home, Shatin |
| NLT | North Lantau Hospital | CPH | Castle Peak Hospital |
| PMH | Princess Margaret Hospital | DKC | Duchess Of Kent Children's Hospital At Sandy Bay |
| POH | Pok Oi Hospital | FYK | Tung Wah Group Of Hospitals-Fung Yiu King Hospital |
| PWH | Prince Of Wales Hospital | GH | Grantham Hospital |
| PYN | Pamela Youde Nethersole Eastern Hospital | HCH | Hong Kong Children's Hospital |
| QEH | Queen Elizabeth Hospital | HHH | Haven Of Hope Hospital |
| QMH | Queen Mary Hospital | HKE | Hong Kong Eye Hospital |
| RH | Ruttonjee Hospital | KCH | Kwai Chung Hospital |
| TKO | Tseung Kwan O Hospital | KH | Kowloon Hospital |
| TMH | Tuen Mun Hospital | ML | Maclehose Medical Rehabilitation Centre |
| TSH | Tin Shui Wai Hospital | OLM | Our Lady Of Maryknoll Hospital |
| UCH | United Christian Hospital | SH | Shatin Hospital |
| YCH | Yan Chai Hospital | SJH | St John Hospital |
| | | SLH | Siu Lam Hospital |
| | | TPH | Tai Po Hospital |
| | | TWE | Tung Wah Eastern Hospital |
| | | TWH | Tung Wah Hospital |
| | | WCH | Wong Chuk Hang Hospital |
| | | WTS | TWGHS Wong Tai Sin Hospital |

Appendix III: Hospital Group & Description

| Hospital Group Code | Hospital Group Description |
|----------------------------|--|
| 1 | General acute hospitals with 24 hour A&E services |
| 2 | Hospitals with a mix of acute and non-acute services |
| 3 | Non-acute or infirmary hospitals |
| 4 | Psychiatric hospitals |
| 5 | Acute hospitals of special nature |