

Appendices

附錄

Appendix 1 附錄 1	Membership of the Hospital Authority 醫院管理局成員	144
Appendix 2 附錄 2	(a) Hospital Authority Committee Structure..... (a) 醫院管理局委員會架構 (b) Hospital Authority Executive Structure..... (b) 醫院管理局行政架構	148 149
Appendix 3 附錄 3	Membership and Terms of Reference of Functional Committees..... 專責委員會成員及職權範圍	150
Appendix 4 附錄 4	Membership of Hospital Governing Committees..... 醫院管治委員會成員	173
Appendix 5 附錄 5	Membership of Regional Advisory Committees..... 區域諮詢委員會成員	205
Appendix 6 附錄 6	Membership of the Board of Trustees of the Hospital Authority Provident Fund Scheme 醫院管理局公積金計劃信託委員會成員	208
Appendix 7 附錄 7	Public Feedback Statistics 公眾意見統計	209
Appendix 8 附錄 8	Statistics of the Controlling Officer's Report 管制人員報告統計數字	210
Appendix 9 附錄 9	Statistics on Number of Beds, Inpatient, Outpatient and Accident & Emergency Services..... 病床數目、住院服務、門診服務及急症服務統計	214
Appendix 10 附錄 10	Statistics on Community and Rehabilitation Services..... 社康及康復服務數字統計	217
Appendix 11 附錄 11	(a) Manpower Position – by Cluster and Institution (a) 人手狀況—按聯網及機構分類 (b) Manpower Position – by Staff Group..... (b) 人手狀況—按職員組別分類	220 222
Appendix 12 附錄 12	(a) Resource Utilisation..... (a) 資源使用 (b) Training and Development Expenditure..... (b) 職員培訓及發展開支	225 226
Appendix 13 附錄 13	Five-year Financial Highlights 過去五年的財政摘要	227
Appendix 14 附錄 14	Analysis of Hospital/Clinic Fees and Charges 醫院／診療所收費分析	231

Membership of the Hospital Authority 醫院管理局成員

Name 姓名	No. of plenary meetings attended in 2013-14 2013-14 年度 出席全體大會次數	Committee participation in 2013-14 2013-14 年度參與的委員會*
	Mr Anthony WU Ting-yuk, GBS, JP Chairman, HA (up to 30.11.2013) 胡定旭先生 醫院管理局主席 (截至2013年11月30日)	9/9
Prof John LEONG Chi-yan, SBS, JP Chairman, HA (from 1.12.2013) 梁智仁教授 醫院管理局主席 (由2013年12月1日起)	6/6	Chairman of plenary meetings, EC and EEC; HGC Member of Ruttonjee Hospital and Tang Shiu Kin Hospital (up to 30.11.2013) 全體大會、行政委員會及緊急應變策導委員會主席；律敦 治醫院及鄧肇堅醫院管治委員會成員(截至2013年11月30 日)
Mr CHAN Bing-woon, SBS, JP 陳炳煥先生	13/15	Member of HRC, MTB and PCC; Chairman of HKRAC; HGC Chairman of Castle Peak Hospital and Siu Lam Hospital 人力資源委員會、中央投標委員會及公眾投訴委員會成 員；港島區域諮詢委員會主席；青山醫院及小欖醫院管治 委員會主席
Mr William CHAN Fu-keung, BBS 陳富強先生	14/15	Vice-Chairman of MTB (from 30.5.2013); Member of HRC, MSDC and MTB (up to 29.5.2013); HGC Member of Tuen Mun Hospital 中央投標委員會副主席(由2013年5月30日起)；人力資 源委員會、醫療服務發展委員會及中央投標委員會(截至 2013年5月29日)成員；屯門醫院管治委員會成員
Dr Constance CHAN Hon-yeet, JP Director of Health 陳漢儀醫生 衛生署署長	15/15	Member of MSDC 醫療服務發展委員會成員
Prof Francis CHAN Ka-leung, JP 陳家亮教授	8/15	Member of HRC, MSDC and MTB (all from 18.4.2013); HGC Member of Prince of Wales Hospital 人力資源委員會、醫療服務發展委員會及中央投標委員會 成員(全由2013年4月18日起)；威爾斯親王醫院管治委 員會成員
Mr CHENG Yan-kee, JP 鄭恩基先生	10/15	Chairman of SSDC; Vice-Chairman of ITGC; Member of EC, EEC, MSDC (up to 1.12.2013) and MTB; HGC Member of Yan Chai Hospital 支援服務發展委員會主席；資訊科技服務管治委員會副主 席；行政委員會、緊急應變策導委員會、醫療服務發展委 員會(截至2013年12月1日)及中央投標委員會成員；仁 濟醫院管治委員會成員
Ms CHIANG Lai-yuen, JP 蔣麗婉女士	8/15	Vice-Chairman of SSDC; Member of MTB (from 25.4.2013); HGC Member of North District Hospital 支援服務發展委員會副主席；中央投標委員會成員(由 2013年4月25日起)；北區醫院管治委員會成員
Ms Quince CHONG Wai-yan 莊偉茵女士	10/15	Member of HRC, MSDC (up to 27.6.2013), MTB and SAC; HGC Chairman of Kwai Chung Hospital and Princess Margaret Hospital 人力資源委員會、醫療服務發展委員會(截至2013年6月 27日)、中央投標委員會及職員上訴委員會成員；葵涌醫 院及瑪嘉烈醫院管治委員會主席

Name 姓名	No. of plenary meetings attended in 2013-14 2013-14 年度 出席全體大會次數	Committee participation in 2013-14 2013-14 年度參與的委員會*
Mr Ricky FUNG Choi-cheung, SBS, JP 馮載祥先生	15/15	Chairman of PCC; Member of ARC, EC and EEC; HGC Member of Hong Kong Eye Hospital, Kowloon Hospital and Rehabaid Centre 公眾投訴委員會主席；審計及風險管理委員會、行政委員 會及緊急應變策導委員會成員；香港眼科醫院、九龍醫院 及復康專科及資源中心管治委員會成員
Mr Andrew FUNG Hau-chung, JP (from 1.12.2013) 馮孝忠先生 (由2013年12月1日起)	5/6	Member of FC and MTB. (both from 18.12.2013) 財務委員會及中央投標委員會成員 (同由2013年12月18 日起)
Mr Lester Garson HUANG, JP 黃嘉純先生	13/15	Chairman of ARC (from 25.4.2013); Member of EC, EEC (both from 25.4.2013); Member of ARC, SSDC and MTB (all up to 24.4.2013); HGC Chairman of Our Lady of Maryknoll Hospital 審計及風險管理委員會主席 (由2013年4月25日起)；行 政委員會及緊急應變策導委員會成員 (同由2013年4月25 日起)；審計及風險管理委員會、支援服務發展委員會及 中央投標委員會成員 (全截至2013年4月24日)；聖母醫 院管治委員會主席
Mr Benjamin HUNG Pi-cheng, JP (up to 30.11.2013) 洪丕正先生 (截至2013年11月30日)	4/9	Chairman of FC; Member of EC and EEC (all up to 30.11.2013) 財務委員會主席；行政委員會及緊急應變策導委員會成員 (全截至2013年11月30日)
Dr KAM Pok-man 甘博文博士	13/15	Chairman of FC (from 1.12.2013); Member of ARC (from 15.4.2013), EC and EEC (both from 1.12.2013), FC (up to 30.11.2013), MSDC (from 18.4.2013), MTB (from 18.4.2013 to 30.11.2013) and SSDC (from 25.4.2013) 財務委員會主席 (由2013年12月1日起)；審計及風險管 理委員會 (由2013年4月15日起)、行政委員會及緊急應 變策導委員會 (同由2013年12月1日起)、財務委員會 (截 至2013年11月30日)、醫療服務發展委員會 (由2013年4 月18日起)、中央投標委員會 (由2013年4月18日至2013 年11月30日) 及支援服務發展委員會 (由2013年4月25日 起) 成員
Ms Ka-shi LAU, BBS 劉嘉時女士	8/15	Vice-Chairman of HRC; Member of ARC, MSDC and MTB (from 25.4.2013); Chairman of NRAC; HGC Member of Pamela Youde Nethersole Eastern Hospital. 人力資源委員會副主席；審計及風險管理委員會、醫療服 務發展委員會及中央投標委員會 (由2013年4月25日起) 成員；新界區域諮詢委員會主席；東區尤德夫人那打素醫 院管治委員會成員
Mr Andy LAU Kwok-fai 劉國輝先生	15/15	Member of HRC (from 19.11.2013), PCC, MTB and SSDC; HGC Member of Queen Elizabeth Hospital 人力資源委員會 (由2013年11月19日起)、公眾投訴委員 會、中央投標委員會及支援服務發展委員會成員；伊利沙 伯醫院管治委員會成員
Mrs Yvonne LAW SHING Mo-han, JP (up to 30.11.2013) 羅盛慕嫻女士 (截至2013年11月30日)	9/9	Member of HRC and MTB; Chairman of KRAC (all up to 30.11.2013); HGC Chairman of Shatin Hospital 人力資源委員會及中央投標委員會成員；九龍區域諮詢委 員會主席 (全截至2013年11月30日)；沙田醫院管治委員 會主席

Name 姓名	No. of plenary meetings attended in 2013-14 2013-14 年度 出席全體大會次數	Committee participation in 2013-14 2013-14 年度參與的委員會*
Mr Stephen LEE Hoi-yin (from 1.12.2013) 李開賢先生 (由 2013 年 12 月 1 日起)	6/6	Member of ARC, FC and MTB. (all from 18.12.2013) 審計及風險管理委員會、財務委員會及中央投標委員會成員 (全由 2013 年 12 月 18 日起)。
Prof LEE Sum-ping (up to 31.7.2013) 李心平教授 (截至 2013 年 7 月 31 日)	3/4	Member of PCC and MTB; HGC Member of Queen Mary Hospital and Tsan Yuk Hospital (all up to 31.7.2013) 公眾投訴委員會及中央投標委員會成員；瑪麗醫院及贊育醫院管治委員會成員 (全截至 2013 年 7 月 31 日)
Prof Diana LEE Tze-fan 李子芬教授	13/15	Chairman of KRAC (from 1.12.2013); Member of HRC, MSDC, MTB; HGC Member of Cheshire Home, Shatin and Tseung Kwan O Hospital 九龍區域諮詢委員會主席 (由 2013 年 12 月 1 日)；人力資源委員會、醫療服務發展委員會及中央投標委員會成員；沙田慈氏護養院及將軍澳醫院管治委員會成員
Ms Esther LEUNG Yuet-yin, JP Deputy Secretary for Financial Services and the Treasury (Treasury) 梁悅賢女士 財經事務及庫務局副秘書長	15/15	Member of FC and MSDC 財務委員會及醫療服務發展委員會成員
Prof Gabriel Matthew LEUNG, GBS (from 1.8.2013) 梁卓偉教授 (由 2013 年 8 月 1 日起)	10/11	Member of MSDC and MTB (both from 21.8.2013); HGC Member of Queen Mary Hospital and Tsan Yuk Hospital (from 9.9.2013) 醫療服務發展委員會及中央投標委員會成員 (同由 2013 年 8 月 21 日起)；瑪麗醫院及贊育醫院管治委員會成員 (由 2013 年 9 月 9 日起)
Mrs Margaret LEUNG KO May-ye, SBS, JP 梁高美懿女士	10/15	Member of FC and MTB 財務委員會及中央投標委員會成員
Dr LEUNG Pak-yin, JP Chief Executive, HA 梁栢賢醫生 醫院管理局行政總裁	15/15	Chairman of ITGC; Member of EC, EEC, FC, HRC, MSDC, MTB, SSDC, all RACs and HGCs 資訊科技服務管治委員會主席；行政委員會、緊急應變策導委員會、財務委員會、人力資源委員會、醫療服務發展委員會、中央投標委員會、支援服務發展委員會、各區域諮詢委員會及各醫院管治委員會成員
Dr LI Chi-kong, JP 李志光醫生	12/15	Member of HRC, MSDC and MTB; HGC Member of Hong Kong Red Cross Blood Transfusion Service 人力資源委員會、醫療服務發展委員會及中央投標委員會成員；香港紅十字會輸血服務中心管治委員會成員
Prof Raymond LIANG Hin-suen, JP 梁憲孫教授	13/15	Member of HRC (from 18.4.2013 to 26.9.2013), MSDC and MTB (both from 18.4.2013) and PCC (from 1.12.2013); HGC Member of North Lantau Hospital (from 24.10.2013) 人力資源委員會 (由 2013 年 4 月 18 日至 2013 年 9 月 26 日)、醫療服務發展委員會及中央投標委員會 (同由 2013 年 4 月 18 日起) 及公眾投訴委員會 (由 2013 年 12 月 1 日起) 成員；北大嶼山醫院管治委員會成員 (由 2013 年 10 月 24 日起)
Mr Patrick MA Ching-hang, BBS, JP 馬清鏗先生	13/15	Chairman of HRC; Member of ARC, EC and EEC and FC; HGC Chairman of Tai Po Hospital; HGC Member of Tung Wah Group of Hospitals 人力資源委員會主席；審計及風險管理委員會、行政委員會、緊急應變策導委員會及財務委員會成員；大埔醫院管治委員會主席；東華三院各醫院管治委員會成員

Name 姓名	No. of plenary meetings attended in 2013-14 2013-14 年度 出席全體大會次數	Committee participation in 2013-14 2013-14 年度參與的委員會*
	Miss Winnie NG 伍穎梅女士	12/15
Mr PANG Yiu-kai, SBS, JP 彭耀佳先生	10/15	Member of FC, MSDC and MTB; HGC Chairman of Queen Mary Hospital and Tsan Yuk Hospital 財務委員會、醫療服務發展委員會及中央投標委員會成員；瑪麗醫院及贊育醫院管治委員會主席
Mr WONG Kwai-huen, BBS, JP 王桂燦先生	15/15	Member of FC, MTB, PCC and SSDC; HGC Member of Tseung Kwan O Hospital 財務委員會、中央投標委員會、公眾投訴委員會及支援服務發展委員會成員；將軍澳醫院管治委員會成員
Prof Maurice YAP Keng-hung 葉健雄教授	15/15	Chairman of MTB (<i>from 25.4.2013</i>) and MSDC; Vice-Chairman of MTB (<i>up to 24.4.2013</i>); Member of ARC, EC, EEC and HRC; HGC Member of Grantham Hospital 中央投標委員會 (<i>由 2013 年 4 月 25 日起</i>) 及醫療服務發展委員會主席；中央投標委員會副主席 (<i>截至 2013 年 4 月 24 日</i>)；審計及風險管理委員會、行政委員會、緊急應變策導委員會及人力資源委員會成員；葛量洪醫院管治委員會成員
Mr Richard YUEN Ming-fai, JP <i>Permanent Secretary for Food and Health (Health)</i> 袁銘輝先生 食物及衛生局常任秘書長 (衛生)	15/15	Member of EEC, FC, HRC, MSDC and SSDC 緊急應變策導委員會、財務委員會、人力資源委員會、醫療服務發展委員會及支援服務發展委員會成員

* Note:

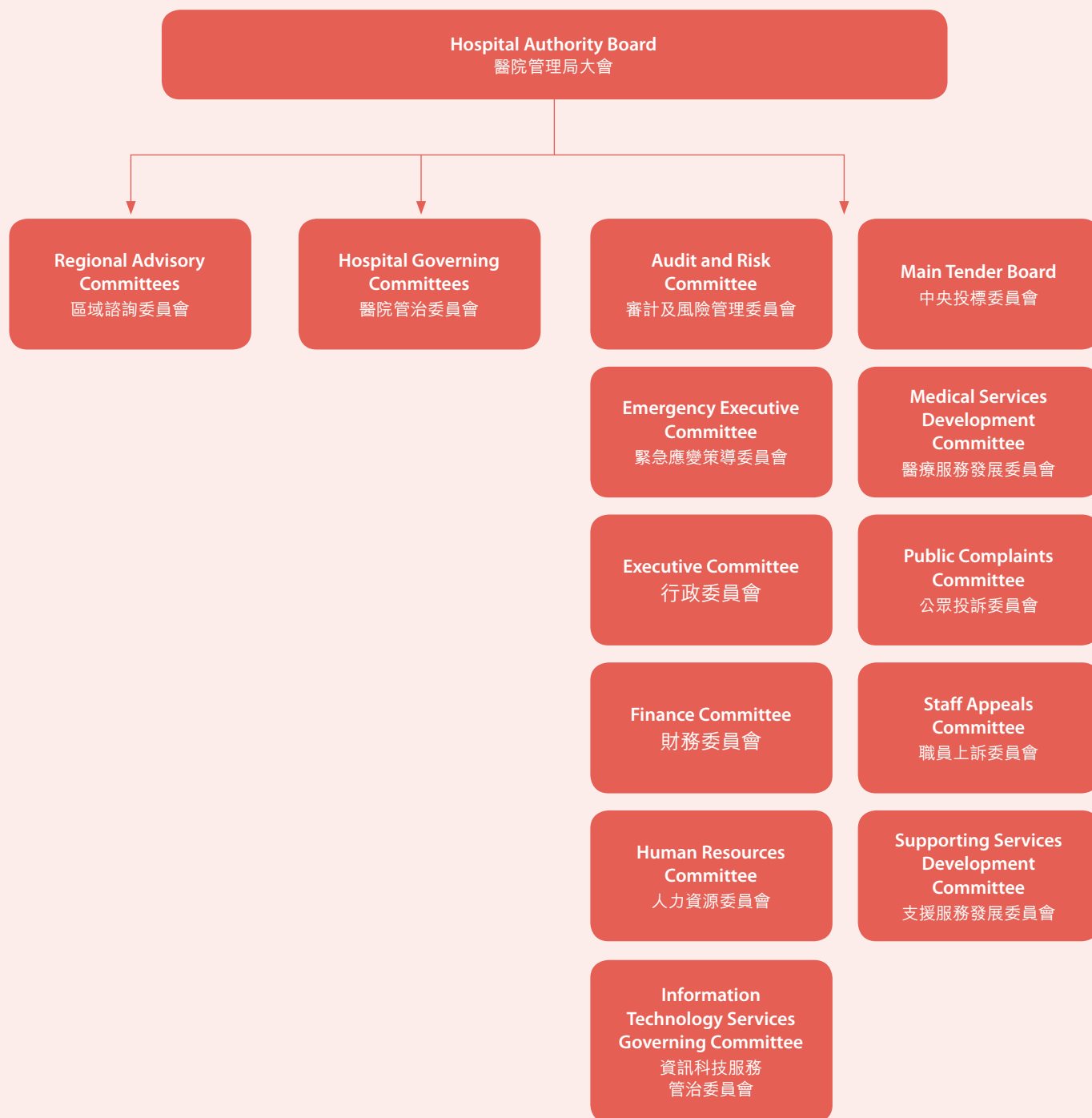
Apart from the principal officer (the Hospital Authority Chief Executive), other members are not remunerated in the capacity as Board members. They discharge the role of governance of the Authority through formulating policies and directions and overseeing executive performance at Board meetings, as well as taking part in steering the work of various committees of the Authority including:

ARC	-	Audit and Risk Committee
EC	-	Executive Committee
EEC	-	Emergency Executive Committee
FC	-	Finance Committee
HGC	-	Hospital Governing Committee
HRAC	-	Regional Advisory Committee of Hong Kong
HRC	-	Human Resources Committee
ITGC	-	Information Technology Services Governing Committee
KRAC	-	Regional Advisory Committee of Kowloon
MSDC	-	Medical Services Development Committee
MTB	-	Main Tender Board
NRAC	-	Regional Advisory Committee of New Territories
PCC	-	Public Complaints Committee
SAC	-	Staff Appeals Committee
SSDC	-	Supporting Services Development Committee

*註：

除主要行政人員 (醫院管理局行政總裁) 外，其他成員均沒有因大會成員的身份而領取任何薪酬。大會成員透過在全體會議上制訂政策／路向、監察管理層的工作成效，以及指導醫管局專責委員會的工作，一同參與醫管局的管治。

Hospital Authority Committee Structure 醫院管理局委員會架構



Note: Membership lists of various committees are listed in Appendices 3, 4 and 5.

註：各委員會成員名單載於附錄3、4及5。

Hospital Authority Executive Structure

醫院管理局行政架構



Membership and Terms of Reference of Functional Committee

專責委員會成員及職權範圍

Audit and Risk Committee

審計及風險管理委員會

Membership List

成員名單

- Chairman** : Mr Lester Garson HUANG, JP (from 25.4.2013)
主席 黃嘉純先生 (由 2013 年 4 月 25 日起)
- Members** : Mr Ricky FUNG Choi-cheung, SBS, JP
成員 馮載祥先生
- Mr Lester Garson HUANG, JP (up to 24.4.2013)
黃嘉純先生 (截至 2013 年 4 月 24 日)
- Dr KAM Pok-man (from 18.4.2013)
甘博文博士 (由 2013 年 4 月 18 日起)
- Ms Ka-shi LAU, BBS
劉嘉時女士
- Mr Stephen LEE Hoi-yin (from 18.12.2013)
李開賢先生 (由 2013 年 12 月 18 日起)
- Mr Patrick MA Ching-hang, BBS, JP
馬清鏗先生
- Ms Estella NG Yi-kum (up to 30.11.2013)
伍綺琴女士 (截至 2013 年 11 月 30 日)
- Prof Maurice YAP Keng-hung
葉健雄教授
- Mr Paul YU Shiu-tin, BBS, JP
余嘯天先生
- Ms Wendy YUNG Wen-yee (from 1.12.2013)
容韻儀女士 (由 2013 年 12 月 1 日起)
- In attendance** : Mr Richard YUEN Ming-fai, JP, *Permanent Secretary for Health*
列席 袁銘輝先生食物及衛生局常任秘書長 (衛生)
- Dr LEUNG Pak-yin, JP, *Chief Executive*
梁栢賢醫生行政總裁

Terms of Reference

- Exercise an active oversight of the internal audit function to ensure that its:
 - mandate, resources and organisational status are appropriate;
 - plans and activities are adequate to provide systematic coverage of the internal control and risk management systems put in place by the Management; and
 - findings are actioned appropriately and timely;
- Recommend the appointment of the external auditor and the audit fee to the Board, endorse any non-audit services to be provided by the external auditor, and consider any questions of resignation or dismissal;
- Consult with the External Auditor on all relevant matters including the:
 - nature and scope of the audit;
 - audited financial statements and the audit opinion;
 - management letter and management's response; and
 - matters of which the External Auditor may wish to draw attention;

職權範圍

- 積極監察醫院管理局(醫管局)的內部審計職能，以確保：
 - 其職責範圍、資源及組織狀況適切恰當；
 - 其計劃及活動足以有系統地涵蓋局方所訂立的內部規管及風險管理制度；及
 - 能就審計所得結果採取適當及時的行動；
- 就外聘核數師的委任及審計費用，向醫管局大會作出建議；批准由外聘核數師提供任何非審計服務；並審議任何有關請辭或解聘事宜；
- 就所有有關事項諮詢外聘核數師，包括：
 - 審計評核的性質和範圍；
 - 經審計的每年財務報表及審計意見；
 - 核數師致管理層的函件及管理層的回應；及
 - 外聘核數師提出的任何事項；

4. Gain reasonable assurance on the completeness, accuracy, and fairness of audited financial statements, including appropriateness of accounting policies and standards, adequacy of disclosures and significant audit adjustments (in collaboration with the Finance Committee);
5. Oversee the effectiveness of systems for risk management and internal control, including:
 - (a) periodic review of:
 - (i) Hospital Authority's policies and process for the identification, assessment and prioritisation of risk;
 - (ii) the Hospital Authority Risk Framework including reports on the enterprise wide risk profile; and
 - (iii) significant risk issues reported to it by the Chief Executive;
 - (b) monitoring Hospital Authority's financial and administrative control processes, including those designed to ensure the safeguarding of resources and operational efficiency, through the results of internal and external audit;
6. Oversee the processes implemented by the Management for monitoring:
 - (a) compliance with pertinent statutes and regulations;
 - (b) compliance with Hospital Authority's Code of Conduct;
 - (c) effectiveness of controls against conflicts of interest and fraud; and
 - (d) effectiveness of Hospital Authority's whistleblowing mechanism.

Note: It should be noted that although the functions of the Audit and Risk Committee cover a wide area, matters that are of a pure clinical nature (such as medical ethics) are not within its purview.

Focus of Work in 2013-14

In 2013-14, the Audit and Risk Committee held six regular meetings with every meeting considering a planned agenda to cover the Committee's Terms of Reference. As it was one of the Committee's functions to oversee risk activities and processes, a report on the key enterprise-wide risks facing the HA in 2014 and the related mitigation strategies was considered at one of its meetings.

To exercise an active oversight of the internal audit function, the Committee approved the Annual Internal Audit Plan for 2013-14 and directly received quarterly progress reports from the Chief Internal Auditor on completed audit results and follow-up actions. Among all the internal audit reports reviewed during the year, some of the key operational audits included "Laboratory Turnaround Times", "Outsourcing of Radiological Imaging Services", "HA Mechanism for the Safe Introduction of New Procedures/Technology (HAMSINP)", "Leave Management Follow-up", "Rest Day/Statutory Holidays/Public Holidays Compliance", "Legal Compliance—Security & Guarding Services Ordinance", "Queuing Time Management in Specialist Outpatient Clinics", "Overseas Travel", "Influenza Pandemic Preparedness", "Special Honorarium Scheme", "Provision of Information for Ethnic Minorities", and "Follow-up Audit on Single Use Devices".

In the area of external audit, the Committee reviewed the external auditor's Audit Strategy Memorandum, including their audit risk assessment and work plan. Subsequently, the Committee received and discussed the external auditor's opinion on HA's financial statements in a joint meeting with the Finance Committee. The Committee also reviewed the results of an evaluation of the external auditor's performance.

4. (聯同財務委員會)就經審計的每年財務報表，包括其會計政策及準則的適切性、披露資料的充分程度，以及重大審計調整等方面取得合理憑證，確保完整、準確及公平；
5. 監察風險管理及內部規管機制的成效，包括：
 - (a) 定期檢討：
 - (i) 醫管局的風險識別、評估及排序政策和程序；
 - (ii) 醫管局的風險框架，包括機構風險概況報告；及
 - (iii) 行政總裁向委員會匯報的重大風險事宜；
 - (b) 透過內部及外部的審計評核結果，監察醫管局的財務及行政規管程序，包括確保資源及運作效率的有關程序；
6. 監察醫管局用以管控以下所訂立的程序：
 - (a) 對有關法例及規例的遵循；
 - (b) 對醫管局行為守則的遵循；
 - (c) 對利益衝突及欺詐行為的規管成效；及
 - (d) 醫管局舉報機制的成效。

註：雖然審計及風險管理委員會的職能涵蓋廣泛，惟其權限並不包括純屬醫療性質之事宜(例如醫療倫理)。

2013-14 年度工作概況

在2013-14年度，審計及風險管理委員會共召開六次會議，討論根據其職權範圍而訂定的議程。由於委員會其中一項職能是監察風險事宜及管控程序，在年內一次會議上，委員會審閱了醫管局2014年面對的主要風險及相關風險緩減策略的報告。

為積極監察醫管局的內部審計功能，委員會批核了2013-14年度的內部審計計劃，並直接收閱總內部審計師有關已完成審計結果及跟進行動的季度報告。年內經審閱的內部審計報告中，一些主要運作審計包括「化驗周轉時間」、「外判放射造影服務」、「醫管局新程序／技術安全引入機制」、「假期管理跟進」、「符合休息日／法定假日／公眾假日規定」、「符合法規 - 保安及護衛服務條例」、「專科門診診所輪候時間管理」、「外遊」、「流感大流行應對準備」、「特別津貼計劃」、「為少數族裔提供資訊」及「一次性醫療用品跟進審計」等。

由外聘核數師進行的審計方面，委員會審核了外聘核數師的審計策略備忘錄，包括有關審計的風險評估及審計工作計劃。委員會其後與財務委員會一同開會，收閱及討論外聘核數師對醫管局財務報表的審核意見。委員會亦審閱了有關外聘核數師的表現評核報告。

Appendix 3

附錄 3

Apart from overseeing the work of external and internal auditors, the Committee also considered accountability reports from the responsible subject officers to monitor the financial and administrative control processes in place to address the capacity risk of long waiting time, breach of security of information technology risks, and risk of supervision of junior staff in the nursing grade. The Committee considered reports on the monitoring of compliance with HA's Code of Conduct, a review of HA's whistleblowing arrangement, and consultancy reviews covering the information technology internal audit function, and the information security and privacy programme.

As a good corporate governance practice, the Committee conducted a self-assessment exercise in reviewing its activities in the past two years according to its Terms of Reference.

除監察外聘核數師及內部審計師的工作外，委員會亦審議不同專責人員提交的問責報告，以監察現行的財務及行政規管程序，應對輪候時間過長的服務能力風險、資訊科技資料外洩風險，以及護理職系督導初級職員的風險。委員會亦審議醫管局行為守則合規監察報告、醫管局舉報機制檢討、涵蓋資訊科技內部審計職能的顧問檢討，以及資訊保安及私隱計劃。

為體現良好機構管治，委員會進行了自我評核，根據其職權範圍檢討過去兩年的工作。

Executive Committee 行政委員會

Membership List

成員名單

Chairman 主席	:	Mr Anthony WU Ting-yuk, GBS, JP (up to 30.11.2013) 胡定旭先生 (截至 2013 年 11 月 30 日) Prof John C Y LEONG, SBS, JP (from 1.12.2013) 梁智仁教授 (由 2013 年 12 月 1 日起)
Member 成員	:	Mr CHENG Yan-kee, JP 鄭恩基先生 Mr Ricky FUNG Choi-cheung, SBS, JP 馮載祥先生 Mr Lester Garson HUANG, JP (from 25.04.2013) 黃嘉純先生 (由 2013 年 4 月 25 日起) Mr Benjamin HUNG Pi-cheng, JP (up to 30.11.2013) 洪丕正先生 (截至 2013 年 11 月 30 日) Dr KAM Pok-man (from 1.12.2013) 甘博文博士 (由 2013 年 12 月 1 日起) Dr LEUNG Pak-yin, JP, Chief Executive 梁栢賢醫生行政總裁 Mr Patrick MA Ching-hang, BBS, JP 馬清鏗先生 Prof Maurice YAP Keng-hung 葉健雄教授

Terms of Reference

1. Consider key matters and overall policies and directions on long-term strategy and planning, risk management, corporate governance, performance management and succession planning, and facilitate the Board in discharging its responsibilities in this regard;
2. Advise on Board meeting agenda items proposed by the Management including an annual forward looking agenda and key matters raised by Functional Committee Chairmen;
3. Serve as a forum for the HA Chairman, Functional Committee Chairmen and the HA Chief Executive to consider major matters relating to the leadership and oversight of the HA;
4. Advise on changes to Board and Functional Committee structure and processes including the respective terms of reference; oversee their annual self-assessments; and advise the Board on the appointment of chairmen, vice-chairmen and co-opted members of the Functional Committees;
5. Advise the Board on the organisation structure and functions of the HA Head Office and its Divisions;
6. Exercise powers delegated by the Board on the following staff matters:
 - (a) Advise the Board on the appointment, remuneration changes, contract variation of the Chief Executive;
 - (b) Advise the Board on the appointment of Cluster Chief Executives and Directors of Divisions;
 - (c) Approve contract renewal, remuneration changes and contract variation as well as lateral transfer/job rotation of Cluster Chief Executives and Directors of Divisions;

職權範圍

1. 審議有關長遠策略規劃、風險管理、機構管治、績效管理及繼任規劃的重要事宜及整體政策方針，並協助醫院管理局（醫管局）大會履行這方面的職責；
2. 就管理人員建議的醫管局大會會議議程提供意見，包括每年的預設議程及專責委員會主席提出的重要事宜；
3. 討論有關領導及監察醫管局工作的重大事宜；
4. 就大會及專責委員會的架構及程序（包括職權範圍）的變動提供意見、監察其自我評核，以及就專責委員會主席、副主席及增選成員的委任向大會提供意見；
5. 就醫管局總辦事處及其部門的組織架構及職能，向大會提供意見；
6. 就以下的職員事宜，行使醫管局大會授予的權力：
 - (a) 就行政總裁的聘任、薪酬及合約變動事宜，向大會提供意見；
 - (b) 就聯網總監及部門總監的聘任，向大會提供意見；
 - (c) 審批聯網總監及部門總監的續約、薪酬與合約變動及同級調職／職位輪調事宜；

- (d) Approve the appointment, contract renewal, remuneration changes and contract variation as well as lateral transfer/job rotation of Hospital Chief Executives and Heads of Divisions; and
 - (e) Review the performance of Chief Executive, Directors, Heads of Division and Cluster Chief Executives;
7. Convene as the Emergency Executive Committee (EEC) in accordance with HA's Emergency Contingency Plan (supplemented by a senior Food & Health Bureau official when meeting as EEC).

Focus of Work in 2013-14

In 2013-14, the Committee met ten times to discuss or approve 42 papers (including three through circulation). Topics considered included appointment and remuneration matters of senior executives and those of chiefs of clusters and hospitals, career posting and succession of senior executives, progress of the Government's Hospital Authority Review, implementation progress on recommendations of the Corporate Governance Review, submissions for and results of the Capital Works Resource Allocation Exercise, membership of HA Committees and Hospital Governing Committees, the HA Budget and Annual Plan for 2014-15, HA's Key Enterprise-wide Risk Profile and reports on staff complaints against senior executives, etc.

As a good corporate governance practice, the Committee conducted a self-assessment exercise in reviewing its activities in the past year according to its Terms of Reference.

- (d) 審批醫院行政總監及部門主管的聘任、續約、薪酬與合約變動及同級調職／職位輪調事宜；及
- (e) 檢討行政總裁、總監、部門主管及聯網總監的工作表現；

7. 根據醫管局緊急應變計劃召開「緊急應變策導委員會」。(如召開「緊急應變策導委員會」，則需增補一名食物及衛生局的高級官員。)

2013-14 年度工作概況

在2013-14年度，行政委員會共召開十次會議，討論或通過42份文件(包括三份傳閱文件)，內容包括高級行政人員和聯網及醫院主管的聘任及薪酬事宜、高級行政人員調任安排及繼任規劃、政府督導的醫管局檢討的進展、機構管治檢討建議的實施進度、基本工程計劃撥款申請及結果、醫管局各委員會及醫院管治委員會成員名單、醫管局2014-15年度財政預算及工作計劃、醫管局主要機構風險概況，以及職員對高級行政人員投訴的報告等。

為體現良好機構管治，委員會進行了自我評核，根據其職權範圍檢討過去一年的工作。

Emergency Executive Committee

緊急應變策導委員會

Membership List

成員名單

- Chairman**
主席
- : Mr Anthony WU Ting-yuk, GBS, JP (up to 30.11.2013)
胡定旭先生 (截至 2013 年 11 月 30 日)
 - Prof John LEONG Chi-yan, SBS, JP (from 01.12.2013)
(In his absence, the Emergency Executive Committee chairmanship should be elected among its standing members)
梁智仁教授 (由 2013 年 12 月 1 日起)
(主席不在時，緊急應變策導委員會的主席應自常任成員中選出)
- Members**
成員
- : Mr CHENG Yan-kee, JP
鄭恩基先生
 - : Mr Ricky FUNG Choi-cheung, SBS, JP
馮載祥先生
 - Mr Lester Garson HUANG, JP (from 25.4.2013)
黃嘉純先生 (由 2013 年 4 月 25 日起)
 - Mr Benjamin HUNG Pi-cheng, JP (up to 30.11.2013)
洪丕正先生 (截至 2013 年 11 月 30 日)
 - Dr KAM Pok-man (from 1.12.2013)
甘博文博士 (由 2013 年 12 月 1 日起)
 - Dr LEUNG Pak-yin, JP, Chief Executive (In his absence, the Deputising CE)
梁栢賢醫生 醫管局行政總裁 (行政總裁不在時，由代理行政總裁出任)
 - Mr Patrick MA Ching-hang, BBS, JP
馬清鏗先生
 - Miss Janice TSE, JP (representing the Permanent Secretary for Health)
謝小華女士 [代表食物及衛生局常任秘書長 (衛生)]
 - Prof Maurice YAP Keng-hung (from 16.1.2013)
葉健雄教授 (由 2013 年 1 月 16 日起)

Note: The Emergency Executive Committee (EEC) was set up by the Board on 15 January 2004. It will automatically be called into action when the HA activates the Tier-three Strategic Response to a major incident, which is defined as an incident with prolonged and territory-wide implications, such as the Serious Level (S2) or Emergency Level Response to influenza pandemic.

註：緊急應變策導委員會於 2004 年 1 月 15 日由醫管局大會成立。當發生重大事故，即對全香港有持續及大範圍影響的事故，例如對流感爆發的嚴重級別 (S2) 或緊急級別應變，醫管局須啟動第三層策略應變，委員會即展開運作。

Terms of Reference

1. To act for the Hospital Authority Board and exercise its powers and functions, including:
 - (a) altering, amending or overriding existing Hospital Authority policies, standards, guidelines and procedures; and
 - (b) the establishment of sub-committees or task forces to tackle particular matters at hand.
2. To identify the objectives and assess the risks facing Hospital Authority in the emergency situation;
3. To approve the strategies and policies for managing the emergency formulated by the Hospital Authority Central Command Committee, and monitor implementation progress in all HA hospitals and institutions;
4. To coordinate activities of the other Hospital Authority committees including Hospital Governing Committees;
5. To ensure effective communication of clear and concise messages to key stakeholders, including staff, patients, Government and the public; and
6. To be accountable to the Authority Board and the making of regular reports to Hospital Authority Members as soon as practicable.

職權範圍

1. 代表醫院管理局大會運作，並行使其權力及職能，包括：
 - (a) 對現有醫院管理局政策、標準、指引及程序作出更改、修訂或否決；及
 - (b) 設立小組委員會或專責小組處理具體事項。
2. 為醫院管理局面對的緊急情況，鑑辨目標及評估風險；
3. 批核醫院管理局中央指揮委員會所制訂的緊急應變策略和方針，並監察所有醫院管理局醫院及機構的執行進度；
4. 統籌其他醫院管理局委員會，包括醫院管治委員會的行動；
5. 確保與主要利益相關各方 (包括職員、病人、政府及市民) 的訊息溝通有效、清晰而簡潔；及
6. 須向醫院管理局大會負責，並於可行範圍內盡快向醫院管理局大會成員報告。

Focus of Work in 2013-14

In 2013-14, the Emergency Executive Committee met four times in response to the confirmed cases of human H7N9 (Avian) influenza infection. At the meeting on 4 December 2013, the Committee was briefed on the chronology and latest position of the situation after the confirmation of the first human case of H7N9 Avian Influenza infection on 2 December 2013 and the activation of the Serious Response Level (S2). Members noted the actions taken or to be taken by HA, including management of confirmed/suspected avian influenza infected patients, contact tracing, activation of the Clinical Management System's eH7 platform for early alert and notification, precautionary measures taken in hospitals, and recommended arrangements for visiting and volunteer services as well as clinical attachment.

At its meeting on 9 January 2014, the Committee was given a progress update on the latest development and situation, including the conditions of the confirmed cases, contact tracing, arrangements for volunteer services and hospital accreditation activities as well as other actions being taken. Members also noted that the Centre for Health Protection (CHP) and Department of Health were actively conducting various disease prevention and control measures at the border in anticipation of the higher risk of human infection arising from the large number of cross-border traffic between Hong Kong and Mainland China during the Chinese New Year holidays.

At its meeting on 17 February 2014, the Committee was briefed on the latest development of the situation and the key actions taken by the HA. Members noted that all of the five H7N9 confirmed cases were imported cases and had travel history to the affected areas in Mainland China during the respective incubation period. No secondary case was identified in the contact tracing exercise conducted by CHP. Members were further briefed on the situation in Mainland China, and noted that the imposing risk of H7N9 from Mainland was expected to continue for a period of time given the frequent cross-border traffic between Hong Kong and Mainland China. Members also noted that HA had stepped up its mitigation measures despite the overall risk to HA was relatively low.

At its meeting on 17 March 2014, Members noted that all of the six H7N9 confirmed cases were imported cases and had travel history to the affected areas in Mainland China during the respective incubation period. Members were informed of the actions taken or being taken by HA, including gradual resumption of clinical attachments, volunteer services, visits and accreditation in non-high risk areas; strengthening of the Extracorporeal Membrane Oxygenation (ECMO) services and monitoring of the isolation facilities etc. Members also noted that additional machines would be procured to meet the surge demand for ECMO services.

As at 31 March 2014, Serious Response Level (S2) remained in force.

2013-14 年度工作概況

在 2013-14 年度，緊急應變策導委員會共召開四次會議，以處理人類感染甲型禽流感 (H7N9) 確診個案。在 2013 年 12 月 4 日的會議上，委員會聽取了 2013 年 12 月 2 日首宗人類感染 H7N9 確診個案以及啟動嚴重應變級別 (S2) 的時序發展和最新情況。成員獲悉醫管局已經或即將採取的各項措施，包括確診／疑似感染甲型禽流感病人的管理、追蹤接觸個案、啟動臨床管理系統的 eH7 警示及通報平台、醫院防範措施，以及醫院探病及義工服務和臨床派駐實習的建議安排。

於 2014 年 1 月 9 日的會議上，委員會聽取了事件的發展經過及最新情況，包括確診個案的狀況、追蹤接觸個案、義工服務安排、醫院認證活動和其他措施。成員亦得悉，衛生防護中心及衛生署因應農曆新年期間中港跨境往來頻繁令人類感染風險上升，積極推行多項預防疾病及邊境管控措施。

於 2014 年 2 月 17 日的會議上，委員會聽取了事件的最新發展及醫管局採取的主要行動。成員得悉全部五宗 H7N9 確診個案均為外地輸入個案，在潛伏期內有外遊紀錄，曾前往中國內地的受影響區域。而在衛生防護中心進行的追蹤接觸個案過程中，並無發現繼發個案。此外，成員聽取了中國內地的情況，知道由於中港跨境往來頻繁，預期來自中國內地的 H7N9 感染風險仍會持續一段時間。而醫管局面對的整體風險雖然相對不高，亦已加強預防措施。

於 2014 年 3 月 17 日的會議上，委員會得悉全部六宗 H7N9 確診個案均為外地輸入個案，在潛伏期內有外遊紀錄，曾前往中國內地的受影響區域。成員知悉醫管局已經或即將採取的行動，包括逐步在非高危區域恢復臨床派駐實習、義工服務、探病以及認證；加強「人工心肺」服務以及監察隔離設施等。成員亦知悉醫管局將添設更多相關儀器，以應付對「人工心肺」服務急速上升的需求。

於 2014 年 3 月 31 日，嚴重應變級別 (S2) 仍維持有效。

Finance Committee

財務委員會

Membership List

成員名單

- Chairman**
主席
- : Mr Benjamin HUNG Pi-cheng, JP (up to 30.11.2013)
洪丕正先生 (截至 2013 年 11 月 30 日)
 - Dr KAM Pok-man (from 1.12.2013)
甘博文博士 (由 2013 年 12 月 1 日起)
- Members**
成員
- : Mr Andrew FUNG Hau-chung, JP (from 18.12.2013)
馮孝忠先生 (由 2013 年 12 月 18 日起)
 - Dr KAM Pok-man (from 18.4.2013 to 30.11.2013)
甘博文博士 (由 2013 年 4 月 18 日至 2013 年 11 月 30 日)
 - Mr Stephen LEE Hoi-yin (from 18.12.2013)
李開賢先生 (由 2013 年 12 月 18 日起)
 - Mrs Margaret LEUNG KO May-yee, SBS, JP
梁高美懿女士
 - Ms Esther LEUNG Yuet-yin, JP /
Ms Karyn CHAN (representing the Secretary for Financial Services and the Treasury)
梁悅賢女士 /
陳靜婉女士 [代表財經事務及庫務局局長]
 - Dr LEUNG Pak-yin, JP, Chief Executive
梁栢賢醫生行政總裁
 - Mr Patrick MA Ching-hang, BBS, JP
馬清鏗先生
 - Mr PANG Yiu-kai, SBS, JP
彭耀佳先生
 - Miss Janice TSE Siu-wa, JP (representing the Permanent Secretary for Health)
謝小華女士 [代表食物及衛生局常任秘書長 (衛生)]
 - Mr WONG Kwai-huen, BBS, JP
王桂壠先生

Terms of Reference

1. Advise and make recommendations on the financial aspects of the Hospital Authority Corporate Plan and Annual Plan;
2. Advise and make recommendations on the financial planning, control, performance, monitoring and reporting aspect of the Hospital Authority;
3. Advise on policy guidelines for all financial matters, including investment, business and insurance;
4. Advise and make recommendations on the resource allocation policies;
5. Advise and recommend to the Hospital Authority on the financial statements (audited and unaudited) of the Hospital Authority;
6. Liaise with the Trustees of the Hospital Authority Provident Fund Scheme and made recommendations to the Hospital Authority;
7. Monitor the financial position of the Hospital Authority; and
8. Consider periodically matters relating to risk, risk management and risk mitigation relevant to finance operations and other relevant areas contributing to the financial risk profile of Hospital Authority.

職權範圍

1. 就醫院管理局 (醫管局) 整體發展計劃及周年工作計劃的財務方面, 提供意見及作出建議;
2. 就醫管局的財政規劃、規管、表現、監察及匯報等方面, 提供意見及作出建議;
3. 就所有財務事宜, 包括投資、業務及保險的政策指引, 提供意見;
4. 就資源分配政策提供意見及作出建議;
5. 就醫管局的每年財務報表 (經審核及未經審核), 向醫管局提供意見及作出建議;
6. 與醫管局公積金計劃的信託人聯繫, 並向醫管局作出建議;
7. 監察醫管局的財政狀況; 及
8. 就醫管局財務運作及其他引致財務風險的範疇, 定期審議相關的風險、風險管理及風險緩減事宜。

Focus of Work in 2013-14

To assist the HA Board in ensuring proper stewardship and effective use of public funds, the Finance Committee met five times in 2013-14 to advise and make recommendations to the Board on various finance related matters for the Authority. Key focus of the Committee in 2013-14 was broadly summarised as follows:

- (a) In support of corporate strategy formulation and policies development of HA, the Committee considered a review of Government funding arrangement for 2014-15 and beyond, and the progress on the continuous refinement of HA's internal resource allocation system with a view to developing a measure that better reflects resource needs from a total patient journey perspective.
- (b) Dovetailing with the HA's service and resource planning process, the Committee considered the proposed 2014-15 HA budget and resource allocation. It also reviewed the financial risk assessment of HA as well as an update on insurance approach and direction for 2013-14.
- (c) On accountability reporting and monitoring of HA's financial position, the Committee reviewed and endorsed the HA's draft financial statements for 2012-13. Besides, it also considered the 2012-13 audited financial statements for a number of designated programmes undertaken by HA, including the electronic Health Record Programme development, the Samaritan Fund, the Community Care Fund Medical Assistance Programmes and the HA Charitable Foundation. In addition to receiving monthly financial reports during the year, the Committee also considered a mid-year financial review of HA together with the unaudited financial statements for the six-months ended 30 September 2013.
- (d) The Committee received regular progress update from the Treasury Panel on the HA's treasury management and operations. Besides, updates on the development of the next generation of Patient Billing System were provided to the Committee. Last but not least, the Committee also reviewed the Annual Work Plan of the Finance Division for 2014-15, and considered an update on the role of the finance function in HA and supported the proposed strategic foci for the medium term.

As a good corporate governance practice, the Committee conducted a self-assessment exercise in reviewing its activities in the past year according to its Terms of Reference.

2012-13 年度工作概況

為協助醫管局大會妥善督導和有效運用公帑，財務委員會在2012-13年度共召開五次會議，就醫管局的多項財務相關事宜，向大會提供意見及作出建議。委員會於2012-13年度的工作重點概述如下：

- (a) 為支援醫管局制訂整體策略及政策，委員會審議2014-15及往後年度政府撥款安排的檢討，以及優化醫管局內部資源分配機制的進展，以病人的整體醫療過程所需之資源作基礎，訂立一套更有效反映資源需求的計算模式。
- (b) 委員會亦配合醫管局的服務及資源規劃進程，審議醫管局2014-15年度預算及資源分配建議，並審閱醫管局2013-14年度的財務風險評估及投保模式及方針報告。
- (c) 在問責報告及監察醫管局財務狀況方面，委員會審閱及通過醫管局2012-13年度的財務報表擬本，亦審議醫管局推行的若干指定計劃於2012-13年度的經審核財務報表，包括電子健康紀錄系統開發計劃、撒瑪利亞基金、關愛基金醫療援助計劃，以及醫院管理局慈善基金。年內委員會除收閱每月財務報告外，亦審議醫管局的年中財政檢討，以及截至2013年9月30日止六個月未經審核的財務報表。
- (d) 委員會定期收閱庫務小組就醫管局庫務管理及運作提交的進度報告，亦收閱新一代病人帳務系統的開發進度報告。最後，委員會亦審閱財務部2014-15年度工作計劃；審議醫管局財務職能角色的報告，並支持建議的中期策略工作重點。

為體現良好機構管治，委員會進行了自我評核，根據其職權範圍檢討過去一年的工作。

Human Resources Committee

人力資源委員會

Membership List

成員名單

Chairman 主席	:	Mr Patrick MA Ching-hang, BBS, JP 馬清鏗先生
Vice-Chairman 副主席	:	Ms Ka-shi LAU, BBS 劉嘉時女士
Members 成員	:	Mr CHAN Bing-woon, SBS, JP 陳炳煥先生
		Mr William CHAN Fu-keung, BBS 陳富強先生
		Prof Francis CHAN Ka-leung, JP (from 18.4.2013) 陳家亮教授 (由 2013 年 4 月 18 日起)
		Ms Quince CHONG Wai-yan 莊偉茵女士
		Mr Billy KONG Churk-hoi, BBS, JP (up to 30.11.2013) 江焯開先生 (截至 2013 年 11 月 30 日)
		Mr Andy LAU Kwok-fai (from 19.11.2013) 劉國輝先生 (由 2013 年 11 月 19 日起)
		Mrs Yvonne LAW SHING Mo-han, JP (up to 30.11.2013) 羅盛慕嫻女士 (截至 2013 年 11 月 30 日)
		Ms Angela LEE Chung-yan (representing the Permanent Secretary for Health) 李頌恩女士 [代表食物及衛生局常任秘書長(衛生)]
		Prof Diana LEE Tze-fan 李子芬教授
		Dr LEUNG Pak-yin, JP, Chief Executive 梁栢賢醫生行政總裁
		Dr Li Chi-kong, JP 李志光醫生
		Prof Raymond LIANG Hin-suen, JP (from 18.4.2013 to 27.9.2013) 梁憲孫教授 (由 2013 年 4 月 18 日至 9 月 27 日)
		Dr Kim MAK, BBS, JP (up to 30.11.2013) 麥建華博士 (截至 2013 年 11 月 30 日)
		Prof Thomas WONG Kwok-shing, JP (up to 30.11.2013) 汪國成教授 (截至 2013 年 11 月 30 日)
		Prof Maurice YAP Keng-hung 葉健雄教授

Terms of Reference

1. Advise on manpower planning;
2. Advise on staff training and development matters;
3. Advise, review and make recommendations on human resources policies and related issues;
4. Advise, review and make recommendations to the Hospital Authority on the terms and conditions of employment for staff;
5. Advise, review and make recommendations to the Hospital Authority on staff pay awards and overall staffing structure;
6. Advise, review and make recommendations to the Hospital Authority on any other staff related matters;

職權範圍

1. 就人力規劃提供意見；
2. 就職員培訓及發展事宜提供意見；
3. 就人力資源政策及有關事宜提供意見，進行檢討及作出建議；
4. 就職員的僱用條件向醫院管理局(醫管局)提供意見，進行檢討及作出建議；
5. 就職員薪酬及整體人手架構向醫管局提供意見，進行檢討及作出建議；
6. 就其他任何與職員有關的事宜向醫管局提供意見，進行檢討及作出建議；

7. Consider periodically matters relating to risk, risk management and risk mitigation relevant to human resources management; and
8. Monitor the performance of the Hospital Authority Mandatory Provident Fund Schemes and make recommendations to the Hospital Authority as and when necessary.

Focus of Work in 2013-14

In 2013-14, the Human Resources Committee met six times to discuss and consider various human resources ("HR") matters of the HA. Along the strategic direction of HA to allay staff shortage and high turnover, the Committee considered and endorsed various HR recommendations and measures that were initiated to improve manpower situation and employment terms and conditions, such as the Optometrist Grade Review and Reform proposal, and the Pay Review for Patient Care Assistants IIIA serving in in-patient wards/ services on 24-hour shifts. It also gave comments on the development of the HR grade management function in HA and received a progress report on the improvement of doctors' working hours in public hospitals. Endorsement-in-principle was granted for the proposed 2013-14 annual pay adjustment for HA employees. The Committee also received a regular update on the Hospital Authority Mandatory Provident Fund Scheme.

To further promote staff health and wellness, the Committee discussed and endorsed a pilot programme proposal to enhance staff access to radiological medical services on staff co-payment basis in 2013-14. It was also updated on the key initiatives of staff wellbeing in 2013-14. A final report on nitrous oxide exposure monitoring in HA's obstetrics and gynaecology units and an on-going nitrous oxide management programme were presented to the Committee as an initiative to improve the work safety management system in HA.

In addition, the Committee received a regular update on HA staff training and development matters. It provided comments on the work progress of the Training & Development Central Committee and gave feedback to the Training and Development unit of Head Office Human Resources Division on new training initiatives. Moreover, the Committee endorsed the proposed conversion arrangement and its implementation upon consideration of the recommendations of a job evaluation for Chief Managers in the HA Head Office.

During the year, the Committee discussed the HR risk assessment for 2013 and 2014 with planned mitigation actions, endorsed the proposed enhancement of management and control of HR functions as well as revision of the Delegation of Authority manuals, and deliberated on the agenda forecast for 2014-15. It also received updates on HR Resources Projects in HA's 2013-14 Resources Allocation Exercise as well as Call Payment Offer exercise for staff other than clinical doctors, and a report on staff complaints received in Year 2013.

As a good corporate governance practice, the Committee conducted a self-assessment exercise in reviewing its activities in the past year according to its Terms of Reference.

7. 定期審議人力資源管理範疇的相關風險、風險管理及風險緩減事宜；以及
8. 監察醫院管理局強積金計劃的表現，並按需要向醫管局提出建議。

2013-14 年度工作概況

在2013-14年度，人力資源委員會共召開六次會議，討論及審議各項人力資源事宜。委員會根據醫管局紓緩人手短缺及職員流失的策略方向，審議及通過多項改善人手情況及僱用條件的人力資源建議和措施，包括視光師職系檢討及改革建議、在24小時輪值住院病房／服務工作的三A級病人服務助理薪酬檢討。委員會亦就醫管局發展人力資源職系管理職能提供意見，並收閱改善公立醫院醫生工時的進展報告，及原則上同意2013-14年度醫管局僱員的年度薪酬調整。此外，委員會亦收閱醫管局強制性公積金計劃的定期報告。

為進一步促進員工健康及福利，委員會於年內審議及通過先導計劃建議，按職員分擔費用模式，方便員工使用放射服務；及獲悉2013-14年度有關員工健康主要計劃措施的最新消息。委員會亦收閱醫管局婦產科病房氧化亞氮(笑氣)監察及持續管控計劃的最後報告，以改善醫管局的職業安全管理。

此外，委員會收閱員工培訓及發展事宜的定期報告，就培訓及發展中央委員會的工作進展提出意見，並就總辦事處人力資源部培訓及發展組的新培訓項目作出建議。另外，委員會在審議總辦事處有關總行政經理工作評估的建議後，通過擬議的調任安排及計劃實施。

年內，委員會審議2013及2014年的人力資源風險評估，以及擬定的風險緩減措施，並通過加強人力資源職能管理與規管及修訂權力轉授手冊的建議，也商討了2014-15年度的預設議程。此外，委員會亦收閱2013-14年度資源分配的人力資源項目報告及非醫生職員候召補償方案，以及2013年所接獲員工投訴的報告。

為體現良好機構管治，委員會進行了自我評核，根據其職權範圍檢討過去一年的工作。

Information Technology Services Governing Committee 資訊科技服務管治委員會

Membership List

成員名單

Chairman 主席	:	Dr LEUNG Pak-yin, JP, <i>Chief Executive</i> 梁栢賢醫生行政總裁
Vice-Chairman 副主席	:	Mr CHENG Yan-kee, JP 鄭恩基先生
Members 成員	:	Mr Davey CHUNG Pui-hong <i>Deputy Secretary for Food and Health (Health)</i> 鍾沛康先生 <i>食物及衛生局副秘書長(衛生)</i> Mr Daniel LAI, BBS, JP <i>Government Chief Information Officer</i> 賴錫璋先生 <i>政府資訊科技總監</i> Mr Stephen LAU Ka-men, JP 劉嘉敏先生 Hon Charles Peter MOK, JP (<i>from 1.12.2013</i>) 莫乃光議員 (<i>由 2013 年 12 月 1 日起</i>)

Terms of Reference

1. Approve corporate policies and standards for Information Technology / Information Systems;
2. Approve and monitor the overall progress of the implementation of the Information Technology / Information Systems Strategic Plan;
3. Approve and monitor the execution of the Information Technology / Information Systems Annual Business Plan;
4. Receive recommendations on the priorities for Information Technology systems development and implementation;
5. Receive advice from the Information Technology Technical Advisory Subcommittee;
6. Receive performance and status reports;
7. Provide periodic progress report to the Hospital Authority Board; and
8. Consider matters relating to risk, risk management and risk mitigation relevant to Information Technology across Hospital Authority.

Focus of Work in 2013-14

Upon the retirement of the former Director (Finance) on 1 September 2013, the Information Technology Division (ITD) HA was separated from the Finance Division to become an independent division managed by the Chief Information Officer (CIO).

職權範圍

1. 通過醫管局的資訊科技／資訊系統政策及標準；
2. 通過資訊科技／資訊系統策略計劃，並監察整體實施進度；
3. 通過資訊科技／資訊系統的每年工作計劃書，並監察實施情況；
4. 收閱有關資訊科技系統發展及實施的建議重點項目；
5. 收閱信息技術諮詢小組委員會的意見；
6. 收閱表現及狀況報告；
7. 向醫管局大會定期提交工作報告；及
8. 審議醫管局資訊科技範疇的相關風險、風險管理及風險緩減事宜。

2013-14 年度工作概況

自上任總監(財務)於2013年9月1日退休後，醫管局的資訊科技部正式脫離財務部成為獨立部門，由資訊服務總管領導。

In 2013-14, the Committee met four times to discuss various issues relating to the strategic development of IT/information systems in HA. During this period, the Committee considered and deliberated on the key risks identified in the IT Operational Risk Assessment and various risk mitigation actions in quality assurance, system performance and availability, data security and privacy, and project governance; the review of human resources related risks in ITD and the mitigating measures to address challenges in operations, implementation of its development work and technology innovation; the action plan of Quality Assurance Consultancy Review associated with HAIT systems development; update on the consultancy review of the HA information security and privacy programme; as well as the preparations for developing a holistic HA Strategy on IT to cope with business priorities and IT capability. To meet the growing demand for IT systems to support the operation of the organization, the Committee also considered and deliberated on the IT Block Vote Submission for 2014-15 and the ITD Annual Work Plan 2014-15 for responding to challenges in continuing existing service delivery and delivering the major strategic IT-enabled projects.

To fulfill its overseeing functions, the Committee monitored the implementation of the work stipulated in the ITD Annual Plan by considering, amongst others, the performance and status reports of respective IT functions at each of its meeting, the comments of which would be conveyed to the relevant working teams under HAITD for follow-up actions. Progress Update on Clinical Management System Phase III, Business Supporting IT Systems, eHealth Record Projects and IT Services Performance were among the standing agenda items of the Committee's meetings. The Committee also monitored the ongoing efforts of HAITD on development of the Government's electronic Health Record (eHR) with HA as the technical agent and endorsed the related draft audited financial statements annually. The Committee also considered and supported the proposed role of HAITD in supporting the eHR Stage 1 recurrent programme and Stage 2 activities for continuity of delivery of service and integrity of the system.

To support HA's service needs with the latest trend of IT technical development, the Committee received advice from the Information Technology Technical Advisory Subcommittee on the IT technical architectures and technology selections proposed by ITD which included open source development tools adoption in eHR CMS On-ramp application, data governance of the Reporting and Business Analysis Project, secured network interface to medical device, wifi versus 3G/4G for mobile computing, and social computing in HA, etc.

As a good corporate governance practice, the Committee conducted a self-assessment exercise in reviewing its activities in the past year according to its Terms of Reference.

在2013-14年度，委員會共召開四次會議，討論醫管局資訊科技／資訊系統策略發展的各個事項。年內，委員會討論及審議資訊科技運作風險評估發現的主要風險及在質素保證、系統表現與備用、數據安全與私隱、項目管治等方面的各項風險緩減措施；檢討資訊科技部的人力資源相關風險，以及緩減業務運作和執行開發及科技創新方面挑戰的措施；配合醫管局資訊科技系統發展的質素保證顧問檢討的行動計劃；醫管局資訊保安及私隱顧問檢討計劃的進展報告；以及因應業務重點項目及資訊科技能力而發展醫管局全盤資訊科技策略的籌備工作。為應付資訊科技系統方面因應支援機構運作而不斷增加的需求，委員會亦討論及審議2014-15年度資訊科技整體撥款申請及資訊科技部2014-15年度工作計劃，以應付維持現行服務並推行各項重大策略性資訊科技項目的挑戰。

為履行其監督職能，委員會監察資訊科技部年度工作計劃，其中考慮各次會議上不同資訊科技職能所作的表現及狀況報告，會上所作評語將傳達予資訊科技部的相關工作小組跟進。委員會會議的常規討論項目包括臨床資訊管理系統第三階段、業務支援資訊科技系統、電子健康紀錄系統計劃及資訊科技服務表現等進展報告。委員會亦監察醫管局作為技術代理為政府開發電子健康紀錄互通系統的持續進度，並每年審閱有關的經審核財務報表擬本。此外，委員會亦考慮並決定支持醫管局資訊科技部為第一階段電子健康紀錄互通系統的常設計劃及第二階段項目提供支援的建議，以確保服務持續性和系統完整性。

為利用最新資訊科技發展支援醫管局的業務需要，委員會收閱信息技術諮詢小組委員會就資訊科技部建議的資訊科技架構及選擇方案所提供的意見，包括電子健康紀錄互通系統與臨床資訊管理系統連接程式之開源開發工具、匯報及業務分析計劃數據管控、醫療設備的安全網絡介面、使用wifi或3G/4G作流動運算，以及醫管局的社交網絡技術等。

為體現良好機構管治，委員會進行了自我評核，根據其職權範圍檢討過去一年的工作。

Main Tender Board

中央投標委員會

Membership List

成員名單

- Chairman** : Prof Maurice YAP Keng-hung (from 25.4.2013)
主席 葉健雄教授 (由 2013 年 4 月 25 日起)
- Vice-Chairman** : Prof Maurice YAP Keng-hung (up to 24.4.2013)
副主席 葉健雄教授 (截至 2013 年 4 月 24 日)
- Mr William CHAN Fu-keung, BBS (from 30.5.2013)
陳富強先生 (由 2013 年 5 月 30 日起)
- Mr Lincoln TSO Lai (from 30.5.2013)
曹禮先生 (由 2013 年 5 月 30 日起)
- Ex-officio members** : Dr LEUNG Pak-yin, JP, *Chief Executive (or his nominated representative)*
當然成員 梁栢賢醫生行政總裁 (行政總裁或其委任代表)
- Ms Nancy TSE Sau-ling, JP, *Director (Finance) (up to 31.8.2013)*
謝秀玲女士財務總監 (截至 2013 年 8 月 31 日)
- Ms Clara CHIN Sheung-chi, *Director (Finance) (from 1.9.2013) (or her nominated representative)*
錢湘芷女士財務總監 (由 2013 年 9 月 1 日起) (財務總監或其委任代表)
- Members** : Two of the following rotating members:
成員 以下其中兩位輪值成員 :
- Mr CHAN Bing-woon, SBS, JP
陳炳煥先生
- Mr William CHAN Fu-keung, BBS (up to 29.5.2013)
陳富強先生 (截至 2013 年 5 月 29 日)
- Prof Francis CHAN Ka-leung, JP (from 18.4.2013)
陳家亮教授 (由 2013 年 4 月 18 日起)
- Mr CHENG Yan-kee, JP
鄭恩基先生
- Ms CHIANG Lai-yuen, JP (from 25.4.2013)
蔣麗婉女士 (由 2013 年 4 月 25 日起)
- Ms Quince CHONG Wai-yan
莊偉茵女士
- Mr Andrew FUNG Hau-chung, JP (from 18.12.2013)
馮孝忠先生 (由 2013 年 12 月 18 日起)
- Mr Lester Garson HUANG, JP (up to 25.4.2013)
黃嘉純先生 (截至 2013 年 4 月 25 日)
- Dr KAM Pok-man (from 18.4.2013 to 30.11.2013)
甘博文博士 (由 2013 年 4 月 18 日至 2013 年 11 月 30 日)
- Ms Ka-shi LAU, BBS (from 25.4.2013)
劉嘉時女士 (由 2013 年 4 月 25 日起)
- Mr Andy LAU Kwok-fai
劉國輝先生
- Mrs Yvonne LAW SHING Mo-han, JP (up to 30.11.2013)
羅盛慕嫻女士 (截至 2013 年 11 月 30 日)
- Mr Stephen LEE Hoi-yin (from 18.12.2013)
李開賢先生 (由 2013 年 12 月 18 日起)
- Prof LEE Sum-ping (up to 31.7.2013)
李心平教授 (截至 2013 年 7 月 31 日)
- Prof Diana LEE Tze-fan
李子芬教授

Prof Gabriel Matthew LEUNG, GBS (from 21.8.2013)

梁卓偉教授 (由 2013 年 8 月 21 日起)

Mrs Margaret LEUNG KO May-yee, SBS, JP

梁高美懿女士

Dr Li Chi-kong, JP

李志光醫生

Prof Raymond LIANG Hin-suen, JP (from 18.4.2013)

梁憲孫教授 (由 2013 年 4 月 18 日起)

Miss Winnie NG

伍穎梅女士

Mr PANG Yiu-kai, SBS, JP

彭耀佳先生

Mr Lincoln TSO Lai (up to 29.5.2013)

曹禮先生 (截至 2013 年 5 月 29 日)

Mr WONG Kwai-huen, BBS, JP

王桂壙先生

Terms of Reference

The main function of the Hospital Authority Main Tender Board is to consider and approve tender of order value above \$4 million;

1. Review and assess the recommendations made by the assessment panel;
2. Review the procedures and criteria adopted by the assessment panel in the course of its selection;
3. Approve the selection made by the assessment panel after satisfying itself that (1) and (2) are in order and such approval should be final.

Focus of Work in 2013-14

In 2013-14, the Main Tender Board met 24 times to consider a total of 694 tender papers for procurement of supplies and services with value of over \$1 million for HA Head Office, and above \$4 million for clusters and hospitals. Tenders for procurement of supplies mainly covered purchases of pharmaceutical products, medical and laboratory equipment and their consumables whereas service tenders were mainly related to hospital domestic and supporting services, maintenance of medical and laboratory equipment, information technology systems and maintenance services and data hosting facilities. Capital works tenders were mainly concerned with hospital redevelopment projects and minor works improvements for maintenance of hospital premises. During the year, Members of the Committee sought clarification or made suggestions for management to follow up on 37 tender papers and action was taken for most of them while four tender papers were resubmitted after further clarification or refinement.

As a good corporate governance practice, the Committee conducted a self-assessment exercise in reviewing its activities in the past year according to its Terms of Reference.

職權範圍

醫管局中央投標委員會的主要職能是審議及通過涉及價值 400 萬元以上的投標：

1. 就評估小組所作的建議，進行檢討及評核；
2. 就評估小組遴選時所採用的程序及準則，進行檢討；及
3. 在確立上述 (1) 及 (2) 項的適切性後，就評估小組的選擇作最終的批核。

2013-14 年度工作概況

在 2013-14 年度，中央投標委員會共召開 24 次會議，審議共 694 份採購物資和服務的投標文件，每宗合約所涉價值為：醫管局總辦事處 100 萬元以上；聯網及醫院 400 萬元以上。有關採購物資的投標主要涉及購買藥物、醫療及化驗設備與消耗品；服務採購的投標主要涉及醫院庶務及支援服務、醫療及化驗設備保養、資訊科技系統和保養及數據寄存設施；而基本工程的投標主要涉及醫院重建項目及醫院建築物保養小型改善工程。年內，委員會成員曾就 37 份投標文件要求管理層釐清或建議管理人員跟進，其中大部分建議已落實執行，有四份投標文件經進一步釐清或修改後重新提呈。

為體現良好機構管治，委員會進行了自我評核，根據其職權範圍檢討過去一年的工作。

Medical Services Development Committee

醫療服務發展委員會

Membership list

成員名單

Chairman

主席

Prof Maurice YAP Keng-hung

葉健雄教授

Members

成員

: Dr Constance CHAN Hon-ye, JP *Director of Health*

陳漢儀醫生 衛生署署長

Mr William CHAN Fu-keung, BBS

陳富強先生

Prof Francis CHAN Ka-leung, JP (*from 18.4.2013*)

陳家亮教授 (*由 2013 年 4 月 18 日起*)

Mr CHENG Yan-kee, JP (*up to 30.11.2013*)

鄭恩基先生 (*截至 2013 年 11 月 30 日*)

Ms Quince CHONG Wai-yan (*up to 26.6.2013*)

莊偉恩女士 (*截至 2013 年 6 月 26 日*)

Dr KAM Pok-man (*from 18.4.2013*)

甘博文博士 (*由 2013 年 4 月 18 日起*)

Ms Ka-shi LAU, BBS

劉嘉時女士

Prof Diana LEE Tze-fan

李子芬教授

Ms Esther LEUNG Yuet-yin, JP/Ms Karyn CHAN (*representing the Secretary for Financial Services and the Treasury*)

梁悅賢女士 / 陳靜婉女士 (*代表財經事務及庫務局局長*)

Prof Gabriel Matthew LEUNG, GBS (*from 21.8.2013*)

梁卓偉教授 (*由 2013 年 8 月 21 日起*)

Dr LEUNG Pak-yin, JP, *Chief Executive*

梁栢賢醫生 行政總裁

Dr LI Chi-kong, JP

李志光醫生

Prof Raymond LIANG Hin-suen, JP (*from 18.4.2013*)

梁憲孫教授 (*由 2013 年 4 月 18 日起*)

Mr PANG Yiu-kai, SBS, JP

彭耀佳先生

Mr Richard YUEN Ming-fai, JP

Permanent Secretary for Health

袁銘輝先生

食物及衛生局常任秘書長 (*衛生*)

Terms of Reference

1. Examine, review and make recommendations on the changing needs of the community in respect of clinical services provided by public hospitals and institutions;
2. Advise and make recommendations on the overall policies, directions and strategies relating to the provision, planning and development of the public hospitals and related services, having regard to the availability of technology, staff and other resources and the need to provide a patient-centred, outcome-focused quality healthcare service by a knowledge-based organisation;

職權範圍

1. 審查及檢討市民對公立醫院和機構所提供的、不斷變化的醫療服務需求，並作出建議；
2. 根據現行可提供的科技、職員人手及其他資源，並顧及作為知識為本機構所需提供的「以病人及成效為中心」的優質醫護服務，就提供、規劃及發展公立醫院及相關服務的整體政策、方針和策略，提供意見及作出建議；

- | | |
|--|--|
| <p>3. Consider and make recommendations on the overall priorities for the planning and development of the public hospitals and related services in order to ensure an optimal utilisation of available resources;</p> <p>4. Consider, review and make recommendations on any other matters related to the planning and development of the public hospitals and related services;</p> <p>5. Consider periodically matters relating to risk, risk management and risk mitigation relevant to medical services development; and</p> <p>6. Exercise powers delegated by the Board on the following matters:</p> <p>(a) Approve the scope of coverage of the Samaritan Fund as recommended by the Management Committee of the Samaritan Fund,</p> <p>(b) Approve clinical service plans on specialty services and redevelopment projects, except those involving decisions on financial provisions.</p> | <p>3. 審議規劃發展公立醫院及相關服務的整體優先次序，並作出建議，確保最有效地運用所獲資源；</p> <p>4. 審議及檢討規劃發展公立醫院及相關服務的任何其他事宜，並作出建議；</p> <p>5. 定期審議醫療服務發展範疇的相關風險、風險管理及風險緩減事宜；及</p> <p>6. 就以下事宜行使醫院管理局大會授予的權力：</p> <p>(a) 批核撒瑪利亞基金管理委員會建議的基金涵蓋範圍；</p> <p>(b) 批核專科服務及重建項目的臨床服務計劃，惟涉及財政撥款的決定者除外。</p> |
|--|--|

Focus of Work in 2013-14

In 2013-14, the Committee met five times to discuss issues relating to the planning, development and management of clinical services. On clinical services planning and development, the Committee considered and deliberated on the service demand projection for inpatient, ambulatory and outreach services; manpower requirement and strategies for doctors, nurses, allied health and pharmacy professionals; development of clinical services plan for the Kowloon Central Cluster; strategic service framework for coronary heart disease; stroke service development plan; framework for the development of Integrated Chinese-Western Medicine; reprovisioning of Yaumatei Specialist Clinic at Queen Elizabeth Hospital (QEH); and the renovation of the Cancer Research Laboratory at QEH.

The Committee considered and gave advice on clinical management issues relating to the introduction of new drugs and indications to be covered by the Samaritan Fund from 2013-14; management of the HA Drug Formulary; waiting time management for specialist outpatient clinics and elective surgery in HA; direction of accident and emergency services in the coming five years; clinical performance monitoring; annual review on key performance indicators; simulation training for healthcare professionals in HA; winter surge preparation; directed donation of deceased organs in Hong Kong and transplant policy for non-local residents; proposal on reforming the private clinic of Hong Kong Eye Hospital; and the patient service and care risks and the proposed risk reduction plans for 2014.

The Committee also received progress reports of various clinical programmes, including the contract management of Chinese Medicine Clinic for Research and Training under the tripartite arrangement; HA Patient Satisfaction Survey; and progress of various public-private partnership service programmes.

As a good corporate governance practice, the Committee conducted a self-assessment exercise in reviewing its activities in the past year according to its Terms of Reference.

2013-14 年度工作概況

在 2013-14 年度，醫療服務發展委員會共召開五次會議，討論臨床服務的規劃、發展及管理事項。在臨床服務規劃及發展方面，委員會考慮及審議住院、日間及外展服務的預測需求、醫生、護士、專職醫療及藥劑專業人員的人手需求和策略、九龍中醫院聯網臨床服務計劃的制訂、冠心病服務策略、中風科服務發展計劃、中西醫結合發展策略框架、在伊利沙伯醫院（伊院）重置油麻地專科診所，以及翻修伊院癌症研究實驗室。

委員會審議不同醫療管理事項，並提供意見，包括撒瑪利亞基金在 2013-14 年度起納入新藥及適應症、醫管局藥物名冊管理、醫管局專科門診診所及非緊急手術輪候時間管理、未來五年急症室服務方向、臨床績效表現監察、主要表現指標年度檢討、醫管局醫護人員模擬訓練、冬季流感高峰期應對準備、香港遺體器官指定捐贈及對非本地居民的移植政策、改革香港眼科醫院私家診所建議，以及 2014 年病人服務及治療風險與風險防範計劃建議。

委員會亦收閱各項臨床服務計劃的進展報告，包括三方合作模式中中醫藥教研中心的合約管理、醫管局病人服務滿意度調查，以及多個公私營協作服務計劃的進展。

為體現良好機構管治，委員會進行了自我評核，根據其職權範圍檢討過去一年的工作。

Public Complaints Committee

公眾投訴委員會

Membership List

成員名單

Chairman 主席	:	Mr Ricky FUNG Choi-cheung, SBS, JP 馮載祥先生
Members 成員	:	Mr CHAN Bing-woon, SBS, JP 陳炳煥先生
		Rev Canon Dr Alan CHAN Chor-choi 陳佐才法政牧師
		Mr CHAN Shu-ying, SBS, JP 陳樹鏞先生
		Ms Christine Barbara CHAN So-han 陳素嫻女士
		Sister Nancy CHEUNG Chu-kin 張柱見修女
		Mr CHOI Chi-sum 蔡志森先生
		Mr Antonio CHU Lok-sang 朱樂生先生
		Prof Joanne CHUNG Wai-yee 鍾慧儀教授
		Mr HO Sau-him 何守謙先生
		Mr Samuel HUI Kwok-ting 許國定先生
		Mr Alex LAM Chi-yau 林志釉先生
		Mr Andy LAU Kwok-fai 劉國輝先生
		Dr Robert LAW Chi-lim* 羅致廉醫生*
		Dr Agnes LAW Koon-chui, JP 羅靚翠博士
		Prof LEE Sum-ping (up to 31.7.2013) 李心平教授 (截至 2013 年 7 月 31 日)
		Prof Raymond LIANG Hin-suen, JP* 梁憲孫教授*
		Dr MAK Sin-ping, BBS* 麥倩屏醫生*
		Prof WAN Chin-chin 尹葉芊芊教授
		Mr WONG Kwai-huen, BBS, JP 王桂壘先生
		Dr WONG Kwok-chun 黃國俊博士
		Mrs Elizabeth WONG YEUNG Po-wo, MBE 黃楊寶和女士
		Ms Lina YAN Hau-yee, MH, JP 殷巧兒女士
		Ms Lisa YIP Sau-wah, JP* 葉秀華女士*

* Panel Chairman

* 小組主席

Terms of Reference

1. The Public Complaints Committee (PCC) is the final complaint redress and appeal body of the Hospital Authority ("HA").
2. The PCC shall independently:
 - (a) consider and decide upon complaints from members of the public who are dissatisfied with the response of the HA/hospital to which they have initially directed their complaints.
 - (b) monitor HA's handling of complaints.
3. Pursuant to Para 2 above, the PCC shall independently advise and monitor the HA on the PCC's recommendations and their implementation.
4. In handling complaint cases, the PCC shall follow the PCC Complaint Handling Guidelines (Annex) which may be amended from time to time.
5. The PCC shall from time to time and at least once a year, make reports to the HA Board and public, including statistics or raising important issues where applicable.

Annex

Guidelines on the handling of complaint cases in the Public Complaints Committee ("the PCC")

1. The PCC is an appeal body within the Hospital Authority ("the HA") to consider appeals made by the public relating to its services. Based on its Terms of Reference, the following are guidelines set by the PCC to facilitate the handling of complaints.
2. The PCC shall not normally handle a complaint:
 - (a) if the complaint relates to services provided by the HA more than 2 years before the date of the lodging of the complaint, unless the PCC is satisfied that in the particular circumstances it is proper to conduct an investigation into such complaint not made within that period;
 - (b) if the complaint is made anonymously and/or the complainant cannot be identified or traced;
 - (c) if the complainant has failed to obtain the proper consent of the patient, to whom the services were provided, in the lodging of the complaint (this restriction will not be applicable if the patient has died or is for any reason unable to act for himself or herself);
 - (d) if the subject matter of the complaint has been referred to or is being considered by the coroner;
 - (e) if the complaint relates to a matter for which a specific statutory complaint procedure exists;
 - (f) if the complainant or the patient concerned has instituted legal proceedings, or has indicated that he/she will institute legal proceedings, against the HA, the hospital or any persons who provided the services (in any event, the Committee shall not entertain any request for compensation);
 - (g) if the complaint relates to dispute over the established policies of HA, for example fees charging policy of the HA in respect of its services;

職權範圍

1. 公眾投訴委員會(委員會)是醫院管理局(醫管局)內最終的投訴處理及上訴機制;
2. 委員會須獨立地:
 - (a) 審議及裁決公眾人士的投訴, 這些投訴最初向醫管局/醫院提出, 但投訴人對有關回覆不滿意; 以及
 - (b) 監察醫管局對投訴的處理;
3. 為執行上述第2段所述職能, 委員會會獨立地向醫管局提出建議, 並監察建議的推行;
4. 委員會在處理投訴個案時, 須依循委員會不時修訂的投訴處理指引; 及
5. 委員會須定期並至少每年一次向醫管局大會及公眾人士匯報工作, 包括提交有關的統計數字或重要議題。

附件

公眾投訴委員會(委員會)處理投訴個案指引

1. 委員會是醫院管理局(醫管局)內的上訴機構, 負責考慮公眾人士對醫管局服務的上訴。委員會按其職權範圍, 制訂了以下投訴處理指引。
2. 如有以下情形, 委員會通常不會受理有關投訴:
 - (a) 在醫管局提供服務後超過兩年, 投訴人方才就該項服務提出投訴。但如委員會信納在某一個案的特別情況下, 對該逾期提出的投訴進行調查是恰當者, 則屬例外;
 - (b) 匿名投訴及/或投訴人無從識別或下落不明;
 - (c) 投訴人於提出投訴時, 未有取得病人(有關服務對象)同意(但假如病人已逝世或因任何理由未能自己作主, 則本限制並不適用);
 - (d) 投訴的主要內容已轉交或正由死因裁判官考慮或審裁;
 - (e) 投訴涉及事宜已有既定法定申訴程序處理;
 - (f) 投訴人或有關病人已採取法律行動, 或已表示將向醫管局、有關醫院或提供有關服務的任何人士採取法律行動(無論如何, 委員會都不會受理任何索償的要求);
 - (g) 投訴涉及醫管局既定政策的爭議, 例如醫管局服務的收費政策;

- (h) if the complaint relates to an assessment made by a medical staff pursuant to any statutory scheme whereas such scheme provides for a channel of appeal, for example, the granting of sick leave under the provisions of the Employees' Compensation Ordinance, Cap. 282;
 - (i) if the complaint relates to personnel matters or contractual matters and commercial matters;
 - (j) if the PCC considers that the complaint is frivolous or vexatious or is not made in good faith; or
 - (k) if the complaint, or a complaint of a substantially similar nature, has previously been the subject matter of a complaint which had been decided upon by the PCC.
3. Taking into account the following:
- (a) the disclosure of legal privileged documents in an open hearing;
 - (b) the disclosure of personal data in an open hearing;
 - (c) the PCC is not a judicial or quasi-judicial body;
 - (d) an aggrieved party has other channels to seek redress; and
 - (e) the PCC should not duplicate the functions of other institutions such as the courts or the Medical Council;
- the PCC considers that its meetings shall not be open to the public.
4. In considering the merits of a complaint, the PCC may from time to time obtain expert opinion by medical professionals or other experts relating to the subject matter of the complaint. If the PCC considers appropriate, it may also invite the complainant, the patient, the medical staffs or any other relevant persons to attend an interview.

(The above Guidelines on the handling of complaint cases may be amended from time to time as appropriate.)

Focus of work in 2013/14

In 2013/14, the Public Complaints Committee held 16 meetings and handled a total of 289 cases, of which 206 were related to medical services, 33 related to administrative procedure, 38 related to staff attitude and 12 others. In addition to the handling of appeal cases, the Committee also advised on complaint handling policies to improve the efficiency and effectiveness of the Authority's complaints system, and make recommendations for system change and improvement of healthcare services. Regular internal and external communication programmes were conducted to enhance the transparency and credibility of the Authority's complaints system and the Committee as the final appeal body. Through its Secretariat, the Committee also shared important lessons learned for risk management and enhanced the complaint handling skills of frontline staff through regular specialist complaint management training including applied mediation skills training.

- (h) 投訴關乎醫護人員根據任何法定計劃所作的醫療評估，而該等計劃本身已有既定上訴渠道，例如根據香港法例第282章僱員補償條例規定簽發病假；
- (i) 關於人事問題、合約或商業事宜的投訴；
- (j) 瑣屑無聊、無理取鬧，或並非出於真誠的投訴；或
- (k) 投訴或性質極為相近的投訴，屬委員會早前已裁決個案的主要內容。

3. 委員會經考慮下列因素後，認為其會議不應向公眾公開：
- (a) 公開會議會披露法律保密的文件；
 - (b) 公開會議會披露有關人士的個人資料；
 - (c) 委員會並非司法或類似司法機構；
 - (d) 感到不平的一方尚有其他申訴渠道；及
 - (e) 委員會功能不應和其他機構（如法庭或醫務委員會）重疊。
4. 於考慮投訴的是非曲直時，委員會可就投訴的主要內容，徵詢醫療專業或其他界別的專家意見。委員會如認為恰當，亦可約見投訴人、病人、醫療人員或其他有關人士。

(委員會可視乎情況不時修訂上述投訴處理指引。)

2013/14 年度工作概況

在 2013/14 年度，公眾投訴委員會共召開 16 次會議及處理 289 宗個案，其中 206 宗關於醫療服務、33 宗關於行政程序、38 宗關於員工態度、12 宗屬其他投訴。委員會除處理上訴個案外，亦就投訴處理政策提供意見，以改善醫管局投訴處理機制的效率及成效，並提出建議以加強機制和改善醫療服務。對內及對外的溝通計劃亦定期進行，以提升醫管局投訴處理機制的透明度和公信力，並讓公眾認識委員會乃醫管局內公眾投訴的最終上訴架構。委員會亦透過秘書處定期舉辦投訴處理的專門訓練班，其中包括應用調解技巧訓練，與有關人員分享所汲取的經驗，從而促進風險管理及增強前線人員的投訴處理技巧。

Staff Appeals Committee

職員上訴委員會

Membership List

成員名單

Chairman 主席	:	Mr Peter LO Chi-lik 羅志力先生
Members 成員	:	Ms Quince CHONG Wai-yan 莊偉茵女士
		Mr Billy KONG Churk-hoi, BBS, JP (up to 30.11.2013) 江焯開先生 (截至 2013 年 11 月 30 日)
		Mr Lawrence LEE Kam-hung, JP (from 1.12.2013) 李金鴻先生 (由 2013 年 12 月 1 日起)
		Dr Kim MAK, BBS, JP (up to 30.11.2013) 麥建華博士 (截至 2013 年 11 月 30 日)
		Prof Thomas WONG Kwok-shing, JP (up to 30.11.2013) 汪國成教授 (截至 2013 年 11 月 30 日)
		Mr Paul YU Shiu-tin, BBS, JP (from 1.12.2013) 余嘯天先生 (由 2013 年 12 月 1 日起)

Terms of Reference

- To consider and decide upon appeals from staff members who have raised a grievance through the normal internal complaint channels and who wish to appeal against the decision made;
- The Committee shall:
 - consider whether the appeal cases need further investigation by the management;
 - direct the appeal cases to be investigated;
 - have access to all the relevant information required from the management for making a decision;
 - ensure that appropriate action is taken; and
 - reply to the appellant;
- The Committee's decision shall represent the Hospital Authority's decision and shall be final; and
- The Committee shall make annual reports to the Hospital Authority Board.

Focus of Work in 2013-14

The Staff Appeals Committee (SAC) was set up on 19 December 2002 as an independent authority for handling staff appeals which have already exhausted the normal staff complaint channels within the operation of HA. The Committee received two staff appeal cases in 2013-14, one of which had been referred back to the respective hospital cluster for completion of the normal staff complaint channels. The other appeal was under consideration by management for clarification of the appeal issues. During the year, the Committee also received additional information relating to an appeal which was determined to be not substantiated in 2012-13. It further considered the case and came to the view that the additional information would not have affected the decision of the SAC's previous decision; and accordingly regarded the case as closed.

As a good corporate governance practice, the Committee conducted a self-assessment exercise in reviewing its activities in the past year according to its Terms of Reference.

職權範圍

- 就曾透過正常內部渠道提出申訴而又不滿有關決定的職員上訴個案，進行審議及決定；
- 委員會須：
 - 考慮上訴個案是否需由管理人員作進一步調查；
 - 指令對上訴個案進行調查；
 - 向管理人員取得所有有關資料，以便作出決定；
 - 確保已採取恰當的行動；及
 - 回覆上訴人；
- 委員會的決定即為醫院管理局的最終決定；及
- 委員會須每年向醫院管理局大會提交報告。

2013-14 年度工作概況

職員上訴委員會是 2002 年 12 月 19 日成立的獨立組織，負責處理醫管局內已經過正常員工投訴渠道處理的上訴個案。在 2013-14 年度，委員會收到兩宗職員上訴個案，其中一宗已發還有關醫院聯網循正常員工投訴程序處理，另一宗正由管理人員審視，以釐清有關上訴事項。年內，委員會亦收閱一宗於 2012-13 年度被裁定為不成立的上訴個案的補充資料。委員會經再審議個案，最後認為補充資料不足以影響委員會原有的裁決，有關上訴已經結案。

為體現良好機構管治，委員會進行了自我評核，根據其職權範圍檢討過去一年的工作。

Supporting Services Development Committee 支援服務發展委員會

Membership List

成員名單

Chairman 主席	:	Mr CHENG Yan-kee, JP 鄭恩基先生
Vice-Chairman 副主席	:	Ms CHIANG Lai-yuen, JP 蔣麗婉女士
Members 成員	:	Prof Edwin CHAN Hon-wan 陳漢雲教授
		Dr Andrew CHAN Ping-chiu, BBS 陳炳釗博士
		Mr Lester Garson HUANG, JP 黃嘉純先生
		Dr KAM Pok-man (from 25.4.2013) 甘博文博士 (由 2013 年 4 月 25 日起)
		Mr Andy LAU Kwok-fai 劉國輝先生
		Ms Angela LEE Chung-yan (representing the Permanent Secretary for Health) 李頌恩女士 [代表食物及衛生局常任秘書長(衛生)]
		Mr Peter LEE Kwok-wah 李國華先生
		Dr LEUNG Pak-yin, JP, Chief Executive 梁栢賢醫生行政總裁
		Mr Gregory LEUNG Wing-lup, SBS (from 25.4.2013) 梁永立先生 (由 2013 年 4 月 25 日起)
		Miss Winnie NG 伍穎梅女士
		Mr WONG Kwai-huen, BBS, JP 王桂壘先生

Terms of Reference

1. Advise on the directions and policies related to the development of Business Support Services and Environmental Protection to best support clinical services delivery in the Hospital Authority;
2. Review and monitor the annual capital expenditure plan approved by the Hospital Authority Board;
3. Review and advise on the implementation and monitoring of Capital Works Projects in the Hospital Authority;
4. Review and advise on the new initiatives in Business Support Services such as improvements in supply chain management, equipment management, strategic outsourcing and public-private-partnership of non-core functions, and the development of supporting services for revenue generation;
5. Advise on the adoption of better practices and industry innovations related to the planning and delivery of Business Support Services and implementation of Capital Works Projects in the Hospital Authority; and
6. Consider periodically matters relating to risk, risk management and risk mitigation relevant to business support services and capital expenditure projects and other areas under the purview of the Committee.

職權範圍

1. 就發展業務支援服務及環境保護工作的方針和政策提供意見，務求最有效地支援醫院管理局(醫管局)的醫療服務；
2. 檢討及監察醫管局大會批核的周年資本開支計劃；
3. 檢討醫管局基本工程項目的推行和監察，並提供意見；
4. 檢討業務支援服務的新措施，例如改善供應鏈管理、設備管理、非核心服務的策略性外判及公私營協作，以及發展支援服務以增加收入，並提供意見；
5. 就醫管局規劃和推行業務支援服務及基本工程項目時，採納業內更佳做法和創新，提供意見；
6. 就業務發展及支援服務、資本開支項目及其他委員會職權範圍內的範疇，定期審議相關的風險、風險管理及風險緩減事宜。

Focus of Work in 2013-14

In 2013-14, the Supporting Services Development Committee met four times to fulfil its Terms of Reference, mainly to advise on the directions and policies related to the development of Business Support Services and Capital Planning to best support clinical service delivery in HA. It reviewed reports on improvement of Non-Emergency Ambulance Transfer Service, hospital security services, guidance for mixed-gender wards, and enhancement of supply chain services to clinical users in clusters. The Committee also followed through the replacement of medical and engineering equipment in 2013-14 and the plan for 2014-15, the implementation of the Enterprise Resources Planning System for pharmaceutical supplies, the progress of advertising services and the strategies for drug procurement and supplies. It revisited the key operational risks in relation to business support services, pharmaceutical supplies and Capital Planning Department. It also considered the scope of work of a consultancy review of HA's procurement strategies and Manual, and a report on supporting service contracts operated by Non-Government Organisations in HA, and monitored the progress on outsourcing Shum Wan Laundry.

The Committee also considered the formulation of the annual capital expenditure plan and one-off grant for minor works projects, and regular reports on the progress of major capital works projects. It reviewed reports on the implementation of Mandatory Building Energy Code in HA hospitals, enhancement of biomedical engineering services, facilities related incident response plans, and an update on barrier free access to HA facilities. It also endorsed the findings of a performance review of HA's Term Contract System, and supported the proposals of combined heat and power application for Alice Ho Miu Ling Nethersole Hospital and application of B5 biodiesel for HA boilers. It received a progress report from the Environmental Working Group, commented on the proposed columbaria near Pok Oi Hospital and reviewed the regular progress reports from the Capital Works Sub-Committee which was established under the Committee to oversee and advise on capital works / project related items.

As a good corporate governance practice, the Committee conducted a self-assessment exercise in reviewing its activities in the past year according to its Terms of Reference.

2013-14 年度工作概況

在2013-14年度，支援服務發展委員會共召開四次會議，履行其職權範圍的職責，主要就業務支援服務及基本工程規劃的發展方針及政策提供意見，務求提供最能切合醫管局醫療服務模式的支援服務。委員會收閱改善非緊急救護運送服務、醫院保安服務、混合男女病房指引，以及為聯網臨床用家加強供應鏈服務的報告；亦審閱了2013-14年度更換醫療及工程設備與2014-15年度規劃、藥物供應採用企業資源計劃系統、廣告服務的進展及藥物採購與供應策略。此外，委員會檢討業務支援服務、藥物供應及基本工程規劃組涉及的主要運作風險，並審議醫管局採購策略及守則顧問檢討的工作範圍，以及非政府機構承辦醫管局支援服務合約的報告，並監察深灣洗衣場的外判進展。

委員會亦審議制訂每年資本開支計劃及小型工程項目一筆過撥款，以及大型基本工程項目的定期進展報告。委員會亦審閱有關醫管局醫院強制實施《建築物能源效益守則》、生物醫學工程服務改善措施、設施事故應變計劃，以及醫管局設施無障礙通道的報告。委員會亦通過醫管局定期合約制度成效的檢討結果，並支持雅麗氏何妙齡那打素醫院汽電共生應用及醫管局鍋爐使用生化柴油的建議。此外，委員會收閱環境保護工作小組的進展報告、就博愛醫院附近興建骨灰龕的建議提出意見，並審閱轄下基本工程小組委員會的定期進展報告，該小組委員會負責審議基本工程及項目的相關事項。

為體現良好機構管治，委員會進行了自我評核，根據其職權範圍檢討過去一年的工作。

Membership of Hospital Governing Committees 醫院管治委員會成員

Alice Ho Miu Ling Nethersole Hospital 雅麗氏何妙齡那打素醫院

Chairman 主席	:	Rt Rev Dr Thomas SOO Yee-po, JP 蘇以葆主教
Ex-officio members 當然成員	:	Hospital Authority Chief Executive or his representative 醫院管理局行政總裁或其代表 Hospital Chief Executive 醫院行政總監
Members 成員	:	Mr Derek CHAN Man-foon 陳文寬先生 Rev Ben CHANG Chun-wa 張振華牧師 Mr CHEUNG Wing-fai, MH 張榮輝先生 Ms Michelle CHOW Yan-wai 周恩惠女士 Mr Richard FUNG Lap-chung 馮立中先生 Ms KO Sui-fun 高瑞芬女士 Mr Michael LAI Kam-cheung, BBS, JP (from 27.6.2013) 賴錦璋先生 (由 2013 年 6 月 27 日起) Mr Roger LEE Chee-wah 李志華先生 Dr Pamela LEUNG, JP 梁明娟醫生 Mr John LI Kwok-heem, MH 李國謙先生 Rev Dr LI Ping-kwong, SBS 李炳光牧師 Mr Wilson MOK Yu-sang 莫裕生先生 Lt-Col Samuel PHO Xuyen-tam (up to 23.6.2013) 傅三川上校 (截至 2013 年 6 月 23 日) Rev PO Kam-cheong 蒲錦昌牧師 Mr Herman TSOI Hak-chiu 蔡克昭先生 Dr WONG Fook-yee 王福義博士 Ms Peggy WONG Pik-kiu, MH, JP 黃碧嬌女士

Bradbury Hospice

白普理寧養中心

Chairman 主席	:	Dr Joseph LEE Man-ho 李文豪醫生
Ex-officio members 當然成員	:	Hospital Authority Chief Executive or his representative 醫院管理局行政總裁或其代表 Hospital Chief Executive 醫院行政總監
Members 成員	:	Dr Hubert CHAN Chung-yee, JP 陳重義博士 Miss Mable Shadalla CHOW Sui-ming 周瑞明小姐 Dr Amy CHOW Yin-man 周燕雯博士 Dr David KAN 簡錦輝醫生 Prof Samantha PANG Mei-che 彭美慈教授 Mr SHUM Si-ki 沈士基先生 Dr Vincent TSE Kin-chuen 謝建泉醫生 Mr Paul WU Wai-keung 胡偉強先生

Caritas Medical Centre

明愛醫院

- Chairman**
主席
- : Prof David CHEUNG Lik-ching
張力正教授
- Ex-officio members**
當然成員
- : Hospital Authority Chief Executive or his representative
醫院管理局行政總裁或其代表
Hospital Chief Executive
醫院行政總監
- Members**
成員
- : Dr Wallace CHAN Chi-ho
陳智豪博士
Mr CHAN Wai-ming, MH
陳偉明先生
Mr Denis CHANG, JP
張健利先生
Mr Augustine CHOI Chi-wa, BBS
蔡志華先生
Mr CHOW Yick-hay, BBS, JP
周奕希先生
Dr Daniel FANG Tak-sang
方德生醫生
Prof Frederick HO Wing-huen, SBS
何永煊教授
Dr Conrad LAM Kui-shing, JP
林鉅成醫生
Mr Anthony WONG Luen-kin, JP
黃鑾堅先生
Rev Michael M C YEUNG, VG
楊鳴章副主教
Rev Joseph YIM Tak-lung
閻德龍神父

Castle Peak Hospital & Siu Lam Hospital 青山醫院及小欖醫院

- Chairman**
主席
- : Mr CHAN Bing-woon, SBS, JP
陳炳煥先生
- Ex-officio members**
當然成員
- : Hospital Authority Chief Executive or his representative
醫院管理局行政總裁或其代表
Hospital Chief Executive
醫院行政總監
- Members**
成員
- : Mr CHAN How-chi, MH
陳孝慈先生
- Dr IP Yan-ming, JP (*up to 27.8.2013*)
葉恩明醫生 (截至2013年8月27日)
- Prof SHAM Pak-chung
沈伯松教授
- Mr TSANG Hin-hong
曾憲康先生
- Ms Deborah WAN Lai-yau, BBS, JP
溫麗友女士
- Dr Jimmy WONG Chi-ho, SBS, JP
王賜豪醫生
- Prof Thomas WONG Kwok-shing, JP
汪國成教授
- Ms Nora YAU Ho-chun, MH, JP
邱可珍女士

Cheshire Home, Chung Hom Kok 春磡角慈氏護養院

Chairman 主席	:	Dr Albert WONG Chi-chiu 王志釗醫生
Ex-officio members 當然成員	:	Hospital Authority Chief Executive or his representative 醫院管理局行政總裁或其代表 Hospital Chief Executive 醫院行政總監
Members 成員	:	Mrs Shelley M CHOW 周慧思女士 Mr Hilbert KA Ping-wah 賈秉華先生 Ms Betty KO Lan-fun 高蘭芬女士 Dr Bernard KONG Ming-hei 江明熙醫生 Mr Peter LI Lan-yiu 李蘭耀先生 Dr Leonard LI Sheung-wai 李常威醫生 Ms Janice MORTON 莫珍妮女士 Mr Simon TAM Chi-ming 譚智明先生 Dr Paul YOUNG Tze-kong, JP 楊子剛博士

Cheshire Home, Shatin 沙田慈氏護養院

Chairman 主席	:	Mrs Linda WONG LEUNG Kit-wah 王梁潔華女士
Ex-officio members 當然成員	:	Hospital Authority Chief Executive or his representative 醫院管理局行政總裁或其代表 Hospital Chief Executive 醫院行政總監
Members 成員	:	Mrs Shelley M CHOW 周慧思女士 Ms Janet LAI Keng-chok 黎勁竹女士 Prof Diana LEE Tze-fan 李子芬教授 Dr Edward LEUNG Man-fuk 梁萬福醫生 Dr Pamela LEUNG, JP 梁明娟醫生 Prof Mark MACALPINE 麥家平教授 Mr Paul MAK Chun-nam 麥鎮南先生 Ms Janice MORTON 莫珍妮女士 Mr Alfred POON Sun-biu 潘新標先生

Duchess of Kent Children's Hospital at Sandy Bay 大口環根德公爵夫人兒童醫院

Chairman 主席	:	Mr Vivian LEE Wai-man 李偉文先生
Ex-officio members 當然成員	:	Hospital Authority Chief Executive or his representative 醫院管理局行政總裁或其代表 Hospital Chief Executive 醫院行政總監
Members 成員	:	Mr CHEUNG Tat-tong 張達棠先生 Mrs FOK Mei-ling (<i>up to 18.3.2014</i>) 霍美玲女士 (<i>截至2014年3月18日</i>) Prof LAU Yu-lung 劉宇隆教授 Mr Renny LIE Ken-jie 李國良先生 Mr Gordon Gilbert LOCH Han-van 陸漢峰先生 Ms Helen LUI Wai-hing 雷慧卿女士 Prof Keith LUK Dip-kei 陸颺驥教授 Dr POON Tak-lun, JP (<i>from 30.5.2013</i>) 潘德鄰醫生 (<i>由2013年5月30日起</i>) Mrs Elizabeth WONG YEUNG Po-wo 黃楊寶和女士

Grantham Hospital 葛量洪醫院

Chairman 主席	:	Mr Steve LAN Yee-fong 藍義方先生
Ex-officio members 當然成員	:	Hospital Authority Chief Executive or his representative 醫院管理局行政總裁或其代表 Hospital Chief Executive 醫院行政總監
Members 成員	:	Dr CHENG Chun-ho 鄭俊豪醫生 Mr Raymond CHOW Wai-kam, JP 周偉淦先生 Prof Karen LAM Siu-ling 林小玲教授 Prof Peggy LAM, GBS, JP 林貝聿嘉教授 Dr Carl LEUNG Ka-kui 梁家駒醫生 Mr William LEUNG Shu-yin 梁樹賢先生 Dr Vitus LEUNG Wing-hang, JP 梁永鏗博士 Prof LO Chung-mau, JP 盧寵茂教授 Mrs Purviz Rusy SHROFF Prof Sydney TANG Chi-wai 鄧智偉教授 Prof Maurice YAP Keng-hung 葉健雄教授 Mr Rocco YIM Sen-kee, BBS, JP 嚴迅奇先生

Haven of Hope Hospital

靈實醫院

Chairman 主席	:	Mr Charles CY CHIU 趙宗義先生
Ex-officio members 當然成員	:	Hospital Authority Chief Executive or his representative 醫院管理局行政總裁或其代表 Hospital Chief Executive 醫院行政總監
Members 成員	:	Mr CHAU Kwok-woon 鄒國煥先生 Ms Clara CHONG Ming-wah 臧明華女士 Dr HO Wai-ip 何焯業醫生 Prof Joseph KWAN Kai-cho 關繼祖教授 Dr LAM Ching-choi, BBS, JP 林正財醫生 Dr Andrew LUK Leung 陸亮博士 Mr Eddie NG Ping-yiu 伍炳耀先生 Dr George NG Sze-fuk, GBS, JP 吳仕福博士 Mr Peter WONG Chun-kow 黃振球先生

Hong Kong Buddhist Hospital 香港佛教醫院

Chairman 主席	:	Mr Keith LAM Hon-keung, JP 林漢強居士
Ex-officio members 當然成員	:	Hospital Authority Chief Executive or his representative 醫院管理局行政總裁或其代表 Hospital Chief Executive 醫院行政總監
Members 成員	:	Ms Kelly CHAN Yuen-sau 陳遠秀女士 Ms Pearl HO Chun-yee (<i>up to 31.12.2013</i>) 何珍宜女士 (截至2013年12月31日) Mr HO Tak-sum, MH 何德心居士 Dr KAO Park-ming 高百鳴醫生 Ven KOK Kwong, GBM 覺光法師 Mr LAI Sze-nuen, BBS, JP 黎時媛居士 Mr Anthony LAM Chi-tat 林志達居士 Ms May LAU Mei-mui 劉美梅女士 Mr LEE Ka-cheung 李家祥居士 Mr SHUM Man-to, SBS 沈文燾先生 Ven SIK Hin-hung 釋衍空法師 Ven SIK Hong-ming 釋宏明法師 Ven SIK Ku-tay 釋果德法師 Ven SIK Kuan-yun 釋寬運法師 Ven SIK To-ping 釋道平法師 Ven SIK Yin-chi 釋演慈法師 Dr WONG Kam-chiu, MH 黃錦超博士

Hong Kong Eye Hospital & Kowloon Hospital 香港眼科醫院及九龍醫院

Chairman 主席	:	Mr LO Chung-hing, SBS 盧重興先生
Ex-officio members 當然成員	:	Hospital Authority Chief Executive or his representative 醫院管理局行政總裁或其代表 Hospital Chief Executive 醫院行政總監
Members 成員	:	Mrs Sheila CHENG CHATJAVAL 陳鄭兆齡女士 Dr Charles CHEUNG Wai-bun, JP 張惠彬博士 Dr Jennifer CHEUNG NG Chui-yiu 張伍翠瑤博士 Mr Ricky FUNG Choi-cheung, SBS, JP 馮載祥先生 Ms Mavis LEE Ming-pui 李明佩女士 Hon Ms Starry LEE Wai-king, JP 李慧琼議員 Mr Louis LOONG Hon-biu 龍漢標先生 Prof Julia TAO LAI Po-wah 陶黎寶華教授 Mr James YIP Shiu-kwong 葉兆光先生

Hong Kong Red Cross Blood Transfusion Service 香港紅十字會輸血服務中心

Chairman 主席	:	Mr Philip TSAI Wing-chung, JP 蔡永忠先生
Ex-officio members 當然成員	:	Hospital Authority Chief Executive or his representative 醫院管理局行政總裁或其代表 Hospital Chief Executive 醫院行政總監
Members 成員	:	Mr CHAN Kai-ming 陳啟明先生 Mr Ambrose HO, SBS, JP 何沛謙先生 Dr HO Chung-ping, MH, JP 何仲平醫生 Ms Ada LAM Wai-ming 林慧明女士 Dr LI Chi-kong, JP 李志光醫生 Mrs Patricia S H LING, MH, JP 林胡秀霞女士 Ms Clara SHEK 石嘉麗女士 Mr Luke WONG Sui-kwong 黃兆光先生 Mrs Irene YAU, JP 丘李賜恩女士

Kwai Chung Hospital & Princess Margaret Hospital 葵涌醫院及瑪嘉烈醫院

Chairman 主席	:	Ms Quince CHONG Wai-yan 莊偉茵女士
Ex-officio members 當然成員	:	Hospital Authority Chief Executive or his representative 醫院管理局行政總裁或其代表 Hospital Chief Executive 醫院行政總監
Members 成員	:	Prof Chetwyn CHAN Che-hin 陳智軒教授 Mr CHAN How-chi, MH 陳孝慈先生 Mr Stanley CHEUNG Tak-kwai 張德貴先生 Mrs Nina LAM LEE Yuen-bing, MH 林李婉冰女士 Mr Alan LEE Chi-keung, MH 李志強先生 Prof Hon Joseph LEE Kok-long, SBS, JP 李國麟議員 Dr John LEE Sam-yuen, BBS 李三元博士 Mr Stephen LIU Wing-ting, JP 廖榮定先生 Mr Henry TONG Sau-chai, MH 湯修齊先生 Dr Peter TSOI Ting-kwok 蔡定國醫生 Mr William WONG Kuen-wai, BBS 黃權威先生

Kwong Wah Hospital & TWGHs Wong Tai Sin Hospital 廣華醫院及東華三院黃大仙醫院

Chairman 主席	:	Dr Ina CHAN Un-chan, BBS 陳婉珍博士
Ex-officio members 當然成員	:	Hospital Authority Chief Executive or his representative 醫院管理局行政總裁或其代表 Hospital Chief Executive 醫院行政總監
Members 成員	:	Mrs Viola CHAN MAN Yee-wai, BBS 陳文綺慧女士 Mr Charles CHANG Juo-hwa, BBS 張佐華先生 Mr CHOW Chun-fai, BBS, JP 仇振輝先生 Mr Frederick FUNG King-wai 馮敬偉先生 Ms Maisy HO 何超蓮女士 Dr John LEE Sam-yuen, BBS 李三元博士 Dr LEE Yuk-lun, JP 李銓麟博士 Mr Billy LEUNG Ting-yu, BBS 梁定宇先生 Mrs Katherine MA 馬陳家歡女士 Mr Patrick MA Ching-hang, BBS, JP 馬清鏗先生 Mr MOK Ying-fan 莫應帆先生 Mr Stephen NG Chi-wing 吳志榮先生 Mr Ivan SZE Wing-hang 施榮恆先生 Ms Wendy TSANG Wan-man 曾韻雯女士 Mr Paul YU Shiu-tin, BBS, JP 余嘯天先生 Dr YU Yuk-ling 余毓靈醫生

MacLehose Medical Rehabilitation Centre 麥理浩復康院

Chairman 主席	:	Dr Eric CHIEN Ping 錢平醫生
Ex-officio members 當然成員	:	Hospital Authority Chief Executive or his representative 醫院管理局行政總裁或其代表 Hospital Chief Executive 醫院行政總監
Members 成員	:	Prof Chetwyn CHAN Che-hin 陳智軒教授 Mr Calvin CHAN Man-yin 陳文彥先生 Mr Vincent CHENG Wing-ming 鄭榮銘先生 Prof Kenneth CHEUNG Man-chee 張文智教授 Dr Daniel FANG Tak-sang 方德生醫生 Dr Edith MOK KWAN Ngan-hing, MH 莫關雁卿博士 Mr NG Hang-sau 伍杏修先生 Mr Sammy NG Wai-tong 吳偉堂先生 Mr Adrian WONG Koon-man, BBS, JP 黃冠文先生 Mr David YAU Po-wing 游寶榮先生 Mr YU See-ho 余斯好先生

North District Hospital 北區醫院

- Chairman**
主席
- : Mrs Gloria NG WONG Yee-man, BBS, JP
吳王依雯女士
- Ex-officio members**
當然成員
- : Hospital Authority Chief Executive or his representative
醫院管理局行政總裁或其代表
Hospital Chief Executive
醫院行政總監
- Members**
成員
- : Ms CHIANG Lai-yuen, JP
蔣麗婉女士
- Mr HUNG Siu-ling
洪少陵先生
- Mr LIU Sui-biu
廖瑞彪先生
- Mr MA Ching-nam, JP
馬清楠先生
- Ir George PANG Chun-sing, MH
彭振聲先生
- Mr Charlie YIP Wing-tong
葉永堂先生
- Mr Thomas YIU Kei-chung
姚紀中先生

North Lantau Hospital 北大嶼山醫院

- Chairman**
主席
- : Ms Sandra LEE Suk-yee, GBS, JP (*from 24.10.2013*)
李淑儀女士 (*由 2013 年 10 月 24 日起*)
- Ex-officio members**
當然成員
- : Hospital Authority Chief Executive or his representative
醫院管理局行政總裁或其代表
Hospital Chief Executive
醫院行政總監
- Members**
成員
- (*All from 24.10.2013*)
(*全部由 2013 年 10 月 24 日起*)
- : Mr CHAN How-chi, MH
陳孝慈先生
- Ms CHAU Chuen-heung, BBS, JP
周轉香女士
- Dr Robert LAW Chi-lim
羅致廉醫生
- Miss Elizabeth LAW Kar-shui, MH
羅嘉穗小姐
- Prof Raymond LIANG Hin-suen, JP
梁憲孫教授

Our Lady of Maryknoll Hospital 聖母醫院

Chairman 主席	:	Mr Lester Garson HUANG, JP 黃嘉純先生
Ex-officio members 當然成員	:	Hospital Authority Chief Executive or his representative 醫院管理局行政總裁或其代表 Hospital Chief Executive 醫院行政總監
Members 成員	:	Father Brian R BARRONS 王朋神父 Mr Michael CHENG Tak-kin, JP 鄭德健先生 Dr Gabriel CHOI Kin 蔡堅醫生 Mr John J CLANCEY Dr Nancy FOK 霍麗玲醫生 Dr Lawrence LAI Fook-ming, BBS, JP 賴福明醫生 Dr LAM Siu-keung 林兆強醫生 Mrs Marigold LAU, SBS, JP 劉賴筱韞女士 Sister Marilu LIMGENCO 林敏妮修女 Ms June LO Hing-yu 羅慶好女士 Mr Rex MOK Chung-fai, MH, JP 莫仲輝先生 Rev Edward PHILLIPS Mr YAN Sai-yin 甄世賢先生 Sister Marya ZABOROWSKI 章慈雲修女

Pamela Youde Nethersole Eastern Hospital 東區尤德夫人那打素醫院

Chairman 主席	:	Mr Lawrence LEE Kam-hung, JP 李金鴻先生
Ex-officio members 當然成員	:	Hospital Authority Chief Executive or his representative 醫院管理局行政總裁或其代表 Hospital Chief Executive 醫院行政總監
Members 成員	:	Ms Ophelia CHAN, BBS 陳肖齡女士 Mr Roland CHOW Kun-chee 周近智先生 Rev CHU Yiu-ming 朱耀明牧師 Ms Sophia KAO Ching-chi, SBS, JP (<i>up to 4.7.2013</i>) 高靜芝女士 (<i>截至2013年7月4日</i>) Ms KO Siu-wah, SBS, JP 高荳華女士 Mr Alex KONG Chack-ho, MH 江澤濠先生 Ms Ka-shi LAU, BBS 劉嘉時女士 Mr Peter LEE Kwok-wah 李國華先生 Mr John LI Kwok-heem, MH 李國謙先生 Dr Yvonne LUI Lai-kwan 呂麗君博士 Rt Rev Dr Thomas SOO Yee-po, JP 蘇以葆主教 Prof TAM Sheung-wai, GBS, JP 譚尚渭教授 Mr YEUNG Po-kwan, JP 楊寶坤先生 Dr Dominic YOUNG Ying-nam 楊應南醫生

Pok Oi Hospital 博愛醫院

Chairman 主席	:	Mr TSANG Yiu-cheung, MH 曾耀祥先生
Ex-officio members 當然成員	:	Hospital Authority Chief Executive or his representative 醫院管理局行政總裁或其代表 Hospital Chief Executive 醫院行政總監
Members 成員	:	Mr Michael CHAN Kee-huen 陳記煊先生 Mrs CHAN LI Lei 陳李妮女士 Dr CHONG Man-yuk 莊文煜醫生 Ms Yvonne CHUA 蔡映媚女士 Dr HO Wing-tim 何榮添博士 Mr Matthew LAM Kin-hong, MH 林建康先生 Hon Mr LEUNG Che-cheung, BBS, JP 梁志祥議員 Mr POON Tak-ming, MH 潘德明先生 Mrs Winnie TAM KEUNG May-chu 譚姜美珠女士 Ms Alice WONG Man-hing 王敏馨女士 Mr Chris YIP Yiu-shing, MH 葉曜丞先生

Prince of Wales Hospital

威爾斯親王醫院

Chairman 主席	:	Mr Edward HO Sing-tin, SBS, JP 何承天先生
Ex-officio members 當然成員	:	Hospital Authority Chief Executive or his representative 醫院管理局行政總裁或其代表 Hospital Chief Executive 醫院行政總監
Members 成員	:	Prof Francis CHAN Ka-leung, JP 陳家亮教授 Mr Larry KWOK Lam-kwong, BBS, JP 郭琳廣先生 Mr Peter LEE Kwok-wah 李國華先生 Ir Prof Peter MOK Kwok-woo 莫國和教授 Ms Maggie NG Miu-man 伍妙敏女士 Ms Winnie NG 伍穎梅女士 Mr Philip WONG Chak-piu, MH 黃澤標先生 Dr WONG Kwai-lam 黃桂林博士

Queen Elizabeth Hospital 伊利沙伯醫院

Chairman 主席	:	Mr John LEE Luen-wai, BBS, JP 李聯偉先生
Ex-officio members 當然成員	:	Hospital Authority Chief Executive or his representative 醫院管理局行政總裁或其代表 Hospital Chief Executive 醫院行政總監
Members 成員	:	Dr Eliza C H CHAN, BBS, JP 陳清霞博士 Ms Maisy HO 何超蓮女士 Dr James HWANG Shu-tak, BBS 黃樹德醫生 Mr Chris IP Ngo-tung 葉傲冬先生 Mr Emmanuel KAO Chu-chee 高主賜先生 Mr Andy LAU Kwok-fai 劉國輝先生 Mr David MUI Ying-yuen, MH, JP 梅應源先生 Ms Winnie NG 伍穎梅女士 Ms Catherine YEN Kai-shun 嚴嘉洵女士

Queen Mary Hospital & Tsan Yuk Hospital 瑪麗醫院及贊育醫院

- Chairman**
主席
- : Mr PANG Yiu-kai, SBS, JP
彭耀佳先生
- Ex-officio members**
當然成員
- : Hospital Authority Chief Executive or his representative
醫院管理局行政總裁或其代表
Hospital Chief Executive
醫院行政總監
- Members**
成員
- : Prof LEE Sum-ping (*up to 31.7.2013*)
李心平教授 (截至2013年7月31日)
- Prof Gabriel Matthew LEUNG, GBS (*from 9.9.2013*)
梁卓偉教授 (由2013年9月9日起)
- Mr Carlos LEUNG Sze-hung (*up to 17.6.2013*)
梁士雄先生 (截至2013年6月17日)
- Mr Joseph LO Kin-ching
勞健青先生
- Mr Lincoln TSO
曹禮先生
- Prof Amy TSUI Bik-may
徐碧美教授
- Ms Catherine YEN Kai-shun
嚴嘉洵女士
- Prof Richard YU Yue-hong, SBS
余宇康教授

Rehabaid Centre

復康專科及資源中心

Chairman 主席	:	Mr Thomas Joseph MULVEY, JP 馬偉東先生
Ex-officio members 當然成員	:	Hospital Authority Chief Executive or his representative 醫院管理局行政總裁或其代表 Hospital Chief Executive 醫院行政總監
Members 成員	:	Dr Joseph BOSCO Hon Judge Kevin Anthony BROWNE Ms Kelly CHAN Yuen-sau 陳遠秀女士 Dr Eddie CHOW Siu-lun 鄒兆麟醫生 Mr Ricky FUNG Choi-cheung, SBS, JP 馮載祥先生 Mr Robin GILL Mrs Kimberley LAM KWONG Lan-heung 林鄺蘭香女士 Hon Judge Patrick LI Hon-leung 李瀚良先生 Ir TSANG Chiu-kwan, JP 曾昭群先生

Ruttonjee & Tang Shiu Kin Hospitals 律敦治醫院及鄧肇堅醫院

Chairman 主席	:	Dr Vitus LEUNG Wing-hang, JP 梁永鏗博士
Ex-officio members 當然成員	:	Hospital Authority Chief Executive or his representative 醫院管理局行政總裁或其代表 Hospital Chief Executive 醫院行政總監
Members 成員	:	Ms Lillian CHAN Lit-yee 陳烈兒女士 Mr Raymond CHOW Wai-kam, JP 周偉淦先生 Mr Steve LAN Yee-fong 藍義方先生 Prof John LEONG Chi-yan, SBS, JP (<i>up to 30.11.2013</i>) 梁智仁教授 (截至2013年11月30日) Mr Edwin LEUNG Chung-ching 梁仲清先生 Dr LIU Ka-ling 廖嘉齡醫生 Mr Norman LO Kam-wah, MH, JP 盧錦華先生 Mr PANG Yuk-ling, SBS, JP 彭玉陵先生 Mr Noshir N SHROFF Mrs Purviz Rusy SHROFF Mr SHUM Choi-sang, SBS, JP 岑才生先生 Ms Anna TANG King-yung, BBS 鄭琴淵女士 Mr Richard TANG Yat-sun, BBS, JP 鄧日樂先生 Ms Alice WOO Wai-see 吳慧思女士

Shatin Hospital 沙田醫院

- Chairman**
主席
- Ex-officio members**
當然成員
- Members**
成員
- : Mrs Yvonne LAW SHING Mo-han, JP
羅盛慕嫻女士
 - : Hospital Authority Chief Executive or his representative
醫院管理局行政總裁或其代表
Hospital Chief Executive
醫院行政總監
 - : Mr CHIU Man-leong
招文亮先生
 - : Dr Andy CHIU Tin-yan
招天欣醫生
 - : Prof Joanne CHUNG Wai-yee
鍾慧儀教授
 - : Mr FONG Cheung-fat
方長發先生
 - : Prof LAM Tai-hing, BBS, JP
林大慶教授
 - : Mr LAU Kim-hung
劉劍雄先生

Tai Po Hospital 大埔醫院

- Chairman**
主席
- : Mr Patrick MA Ching-hang, BBS, JP
馬清鏗先生
- Ex-officio members**
當然成員
- : Hospital Authority Chief Executive or his representative
醫院管理局行政總裁或其代表
Hospital Chief Executive
醫院行政總監
- Members**
成員
- : Ms Nancy KIT Kwong-chi, JP
關港子女士
- Dr Benny KWONG Kai-sing
鄺啟成博士
- Mr Gregory LEUNG Wing-lup, SBS
梁永立先生
- Mr LEUNG Wo-ping, JP
梁和平先生
- Mr Arthur LI Ka-tat
李家達先生
- Mr MAN Chen-fai, BBS
文春輝先生
- Dr YIP Ka-chee
葉嘉池醫生

Tseung Kwan O Hospital 將軍澳醫院

Chairman 主席	:	Dr Eliza C H CHAN, BBS, JP 陳清霞博士
Ex-officio members 當然成員	:	Hospital Authority Chief Executive or his representative 醫院管理局行政總裁或其代表 Hospital Chief Executive 醫院行政總監
Members 成員	:	Mr Raymond CHAN Wai-man 陳偉文先生 Prof Joseph KWAN Kai-cho 關繼祖教授 Prof Diana LEE Tze-fan 李子芬教授 Mr Stephen LIU Wing-ting, JP 廖榮定先生 Ms Nancy TSANG Lan-see, JP 曾蘭斯女士 Dr Hayles WAI Heung-wah 衛向華醫生 Mr WAN Yuet-cheung, MH, JP 溫悅昌先生 Mr WONG Kwai-huen, BBS, JP 王桂壙先生

Tuen Mun Hospital 屯門醫院

Chairman 主席	:	Mr Paul YU Shiu-tin, BBS, JP 余嘯天先生
Ex-officio members 當然成員	:	Hospital Authority Chief Executive or his representative 醫院管理局行政總裁或其代表 Hospital Chief Executive 醫院行政總監
Members 成員	:	Prof Alfred CHAN Cheung-ming, BBS, JP 陳章明教授 Mr William CHAN Fu-keung, BBS 陳富強先生 Mr KU Moon-lun 古滿麟先生 Mr Lothar LEE Hung-sham, MH 李洪森先生 Mr Edward PONG Chong, BBS, JP 龐創先生 Ms Lina YAN Hau-yee, MH, JP 殷巧兒女士 Mr Boris YEUNG Sau-ming 楊秀明先生 Mr Charlie YIP Wing-tong 葉永堂先生

Tung Wah Hospital/Tung Wah Eastern Hospital/
TWGHs Fung Yiu King Hospital
東華醫院及東華東院及東華三院馮堯敬醫院

Chairman 主席	:	Dr Ina CHAN Un-chan, BBS 陳婉珍博士
Ex-officio members 當然成員	:	Hospital Authority Chief Executive or his representative 醫院管理局行政總裁或其代表 Hospital Chief Executive 醫院行政總監
Members 成員	:	Mrs Viola CHAN MAN Yee-wai, BBS 陳文綺慧女士 Mr Charles CHANG Juo-hwa, BBS 張佐華先生 Ms CHENG Lai-king 鄭麗琮女士 Dr CHU Chor-lup 朱初立醫生 Mr Frederick FUNG King-wai 馮敬偉先生 Ms Maisy HO 何超濶女士 Mr Henry LAI Hin-wing 賴顯榮先生 Dr John LEE Sam-yuen, BBS 李三元博士 Dr LEE Yuk-lun, JP 李銜麟博士 Mr Billy LEUNG Ting-yu, BBS 梁定宇先生 Mrs Katherine MA 馬陳家歡女士 Mr Patrick MA Ching-hang, BBS, JP 馬清鏗先生 Mr Stephen NG Chi-wing 吳志榮先生 Mr Ivan SZE Wing-hang 施榮恆先生 Mr TONG Chun-wan 唐振寰先生

United Christian Hospital 基督教聯合醫院

Chairman 主席	:	Mr John LI Kwok-heem, MH 李國謙先生
Ex-officio members 當然成員	:	Hospital Authority Chief Executive or his representative 醫院管理局行政總裁或其代表 Hospital Chief Executive 醫院行政總監
Members 成員	:	Mr Bunny CHAN Chung-bun, GBS, JP 陳振彬先生 Bishop Jenny CHAN Kin-lai 陳堅麗監督 Mr Derek CHAN Man-foon 陳文寬先生 Mr Clifford King CHIU 邱令智先生 Ms Margot CHOW Yan-tse 周恩慈女士 Ms Constance CHOY Hok-man 蔡學雯女士 Mr Paul FAN Chor-ho, SBS, JP 范佐浩先生 Mr FUNG Sau-chung 馮壽松先生 Rev Paul KAN Kei-piu 簡祺標牧師 Dr LAM Kin-wah, BBS 林建華博士 Mr Marthy LI Chak-kwan 李澤昆先生 Rev LO Lung-kwong 盧龍光牧師 Dr Danny MA Ping-kwan 馬炳坤醫生 Rev PO Kam-cheong 蒲錦昌牧師 Rev Eric SO Shing-yit (<i>up to 30.11.2013</i>) 蘇成溢牧師 (截至2013年11月30日) Mr Thomas TSANG Fuk-chuen 曾福全先生 Mr Herbert TSOI Hak-kong, BBS, JP 蔡克剛先生 Rt Rev Louis TSUI Tsan-sang 徐贊生主教 Mr David WONG Tat-kee 黃達琪先生 Ms Grace WONG Yuen-ling 黃婉玲女士 Dr Alice YUK Tak-fun, JP 郁德芬博士

Yan Chai Hospital 仁濟醫院

Chairman 主席	:	Mr Raymond LEUNG Cheong-ming, MH 梁昌明先生
Ex-officio members 當然成員	:	Hospital Authority Chief Executive or his representative 醫院管理局行政總裁或其代表 Hospital Chief Executive 醫院行政總監
Members 成員	:	Mr William CHAU Chun-wing, MH, JP 周鎮榮先生 Dr Baldwin CHENG Shing-fung 鄭承峰博士 Mr CHENG Yan-kee, JP 鄭恩基先生 Mr Clement FUNG Cheuk-nang 馮卓能先生 Mr Alex LAN Khong-poh 凌宏寶先生 Mrs Susan SO CHAN Wai-hang 蘇陳偉香女士 Mr Alfred WONG Wai-kin 黃偉健先生 Mr Vincent WONG Yin-shun 王賢訊先生 Mr YAU Kam-ping, MH 邱錦平先生 Mrs YIM TSUI Yuk-shan 嚴徐玉珊女士

Membership of Regional Advisory Committees 區域諮詢委員會成員

Hong Kong Regional Advisory Committee 港島區域諮詢委員會

Chairman 主席	:	Mr CHAN Bing-woon, SBS, JP 陳炳煥先生
Ex-officio members 當然成員	:	Hospital Authority Chief Executive or his representative 醫院管理局行政總裁或其代表 Director of Health or his/her representative 衛生署署長或其代表
Members 成員	:	Mr AU Lap-sing, MH 歐立成先生 Mr Stephen Chan Chit-kwai, BBS, JP 陳捷貴先生 Ms Ophelia CHAN, BBS 陳肖齡女士 Dr Eric CHIEN Ping 錢平醫生 Mr Frederick FUNG King-wai 馮敬偉先生 Mr JONG Koon-sang 莊冠生先生 Mr Alex KONG Chack-ho, MH 江澤濠先生 Mr Steve LAN Yee-fong 藍義方先生 Dr LAU Chor-chiu, MH 劉楚釗醫生 Dr Vitus LEUNG Wing-hang, JP 梁永鏗博士 Ms Helen LUI Wai-hing 雷慧卿女士 Dr Jeffrey PONG Chiu-fai 龐朝輝醫生 Mr TSANG Wing-wah 曾永華先生 Mr Lincoln TSO 曹禮先生 Prof Amy TSUI Bik-may 徐碧美教授 Dr Paul YOUNG Tze-kong, JP 楊子剛博士 Prof Richard YUEN Man-fung 袁孟峰教授 Mr YUNG Chi-ming, BBS 翁志明先生

Kowloon Regional Advisory Committee 九龍區域諮詢委員會

- Chairman**
主席
- : Mrs Yvonne LAW SHING Mo-han, JP (up to 30.11.2013)
羅盛慕嫻女士 (截至 2013 年 11 月 30 日)
- Prof Diana LEE Tze-fan (from 01.12.2013)
李子芬教授 (由 2013 年 12 月 1 日起)
- Ex-officio members**
當然成員
- : Hospital Authority Chief Executive or his representative
醫院管理局行政總裁或其代表
- Director of Health or his/her representative
衛生署署長或其代表
- Members**
成員
- : Mr CHAN Kai-wai
陳繼偉先生
- Ms CHAU Chuen-heung, BBS, JP
周轉香女士
- Mr Michael CHENG Tak-kin, JP
鄭德健先生
- Prof David CHEUNG Lik-ching
張力正教授
- Dr Charles CHEUNG Wai-bun, JP
張惠彬博士
- Mr Charles CY CHIU
趙宗義先生
- Mr CHOW Chun-fai, BBS, JP
仇振輝先生
- Ms Margot CHOW Yan-tse
周恩慈女士
- Mr CHOY Chak-hung
蔡澤鴻先生
- Mr HO Tak-sum, MH
何德心居士
- Mr HO Yin-fai
何賢輝先生
- Mr Chris IP Ngo-tung
葉傲冬先生
- Ms Nancy LAM Chui-ling, MH
林翠玲女士
- Mrs Nina LAM LEE Yuen-bing, MH
林李婉冰女士
- Ms LAM Yuen-pun
林婉瀆女士
- Mr Thomas Joseph MULVEY, JP
馬偉東先生
- Mr SHUM Siu-hung
沈少雄先生
- Mr Ivan SZE Wing-hang
施榮恆先生
- Mr WAN Yuet-cheung, MH, JP
溫悅昌先生
- Mr Luke WONG Sui-kwong
黃兆光先生
- Dr WONG Yee-him
黃以謙醫生
- Mrs YIM TSUI Yuk-shan
嚴徐玉珊女士

New Territories Regional Advisory Committee 新界區域諮詢委員會

Chairman 主席	:	Ms Ka-shi LAU, BBS 劉嘉時女士
Ex-officio members 當然成員	:	Hospital Authority Chief Executive or his representative 醫院管理局行政總裁或其代表 Director of Health or his/her representative 衛生署署長或其代表
Members 成員	:	Mr Daniel CHAM Ka-hung, BBS, JP 湛家雄先生 Mr FONG Cheung-fat 方長發先生 Dr HO Wing-tim 何榮添博士 Mr LAM Tak-leung, MH, JP 林德亮先生 Mr LAU Kwok-fan, MH 劉國勳先生 Dr Joseph LEE Man-ho 李文豪醫生 Mr LEUNG Wo-ping, JP 梁和平先生 Mr LI Kwok-ying, BBS, JP 李國英先生 Ir Prof Peter MOK Kwok-woo 莫國和教授 Prof Simon NG Siu-man 吳兆文教授 Ir George PANG Chun-sing, MH 彭振聲先生 Mr Alfred POON Sun-biu 潘新標先生 Mr Philip WONG Chak-piu, MH 黃澤標先生 Prof Thomas WONG Kwok-shing, JP 汪國成教授 Ms Peggy WONG Pik-kiu, MH, JP 黃碧嬌女士 Mr Charlie YIP Wing-tong 葉永堂先生

Membership of the Board of Trustees of the Hospital Authority Provident Fund Scheme 2013-14 醫院管理局公積金計劃信託委員會成員 2013-14

Chairman 主席	:	Mr John LEE Luen-wai, BBS, JP 李聯偉先生
Trustees 信託委員	:	Ms Nancy TSE Sau-ling, JP 謝秀玲女士
		Mr Peter LO Chi-lik 羅志力先生
		Ms LAU Ka-shi, BBS (<i>up to 28.2.2014</i>) 劉嘉時女士 (截至2014年2月28日)
		Ms Clara CHIN Sheung-chi (<i>from 26.3.2014</i>) 錢湘芷女士 (由2014年3月26日起)
		Mr Patrick MA Ching-hang, BBS, JP 馬清鏗先生
		Dr WONG Tak-cheung 黃德祥醫生
		Mr Barry NG Kwok-hing 吳國慶先生
		Dr Ernest MA Hon-ming 馬漢明醫生
		Dr WONG Chi-keung (<i>up to 15.9.2013</i>) 黃志強醫生 (截至2013年9月15日)
		Dr Vincent YEUNG Tok-fai (<i>from 21.10.2013</i>) 楊鐸輝醫生 (由2013年10月21日起)
		Miss Janice TSE Siu-wa, JP 謝小華女士
		Mr Raymond LEE Wing-hung 李永鴻先生
		Mr Alan Howard SMITH, JP 史亞倫先生

Public Feedback Statistics 公眾意見統計

Complaint / Appreciation Received (1.4.2013 – 31.3.2014) 投訴／讚揚數字 (2013年4月1日 – 2014年3月31日)

Public Complaints Committee

公眾投訴委員會

Nature of cases 個案性質	Number of appeal cases 上訴個案數字
Medical services 醫療服務	206
Staff attitude 職員態度	38
Administrative procedure 行政程序	33
Others 其他	12
Total number of appeal cases handled 處理上訴個案總數	289

Hospital Complaint / Feedback / Appreciation Statistics

醫院投訴／意見／讚揚統計

Nature of complaint / feedback/ appreciation cases 投訴／意見／讚揚個案性質	Complaint received 投訴數字	Feedback received 意見數字	Appreciation received 讚揚數字
Medical services 醫療服務	1,520	3,982	18,159
Staff attitude 職員態度	549	2,568	9,302
Administrative procedure 行政程序	397	2,675	1,723
Overall performance 整體表現	165	1,825	818
Others 其他	22	592	12,402
Total number of hospital complaint / feedback / appreciation 醫院投訴／意見／讚揚總數	2,653	11,642	42,404

GOPC* Complaint / Feedback / Appreciation Statistics

普通科門診診所投訴／意見／讚揚統計

Nature of complaint / feedback/ appreciation cases 投訴／意見／讚揚個案性質	Complaint received 投訴數字	Feedback received 意見數字	Appreciation received 讚揚數字
Medical services 醫療服務	83	247	1,784
Staff attitude 職員態度	72	266	1,301
Administrative procedure 行政程序	46	336	115
Overall performance 整體表現	8	94	60
Others 其他	10	30	768
Total number of complaint / feedback / appreciation received by GOPC 普通科門診診所投訴／意見／讚揚總數	219	973	4,028

* General outpatient clinics

Statistics of the Controlling Officer's Report 管制人員報告統計數字

The Hospital Authority generally achieved its performance targets in 2013-14. The volume of patient care activities across the full range of services in 2013-14 is comparable to the level in 2012-13.

醫院管理局大致上達到2013-14年度的服務表現目標。2013-14年度各類病人醫護服務的整體服務量與2012-13年度的水平相若。

The key activity data in respect of the Hospital Authority are:

有關醫院管理局服務的主要數據如下：

	2012-13	2013-14
(I) Access to services 可取用的服務		
inpatient services 住院服務		
no. of hospital beds (as at 31 March) 醫院病床數目(截至三月三十一日)		
general (acute and convalescence) 普通科(急症及康復)	20,845	21,132
infirmary 療養科	2,041	2,041
mentally ill 精神科	3,607	3,607
mentally handicapped 智障科	660	660
overall 總計	27,153	27,440
ambulatory and outreach services 日間及外展服務		
accident and emergency (A&E) services 急症室服務		
percentage of A&E patients within target waiting time 在目標輪候時間內獲處理的急症病人的百分率		
triage I (critical cases - 0 minutes) (%) 第I類別(危殆個案-0分鐘)(%)	100	100
triage II (emergency cases - 15 minutes) (%) 第II類別(危急個案-15分鐘)(%)	97	96
triage III (urgent cases - 30 minutes) (%) 第III類別(緊急個案-30分鐘)(%)	84	75
specialist outpatient services 專科門診服務		
median waiting time for first appointment at specialist clinics 專科診所新症輪候時間中位數		
first priority patients 第一優先就診病人	< 1 week	< 1 week
second priority patients 第二優先就診病人	5 weeks	5 weeks
rehabilitation and geriatric services 康復及老人科服務		
no. of community nurses 社康護士數目	446	449
no. of geriatric day places 老人科日間醫院名額	619	619
psychiatric services 精神科服務		
no. of community psychiatric nurses 精神科社康護士數目	127	130
no. of psychiatric day places 精神科日間醫院名額	889	889

	2012-13	2013-14
(II) Delivery of services 所提供的服務		
<i>in-patient services</i> 住院服務		
no. of discharges & deaths 住院病人出院人次及死亡人數		
general (acute and convalescence) 普通科 (急症及康復)	1,005,918	1,005,483
infirmery 療養科	3,364	3,301
mentally ill 精神科	17,155	17,662
mentally handicapped 智障科	568	552
overall 總計	1,027,005	1,026,998
no. of patient days 病人住院日次		
general (acute and convalescence) 普通科 (急症及康復)	5,605,576	5,798,056
infirmery 療養科	504,845	505,244
mentally ill 精神科	979,880	969,898
mentally handicapped 智障科	207,909	205,890
overall 總計	7,298,210	7,479,088
bed occupancy rate(%) 病床住用率 (百分比)		
general (acute and convalescence) 普通科 (急症及康復)	85%	87%
infirmery 療養科	86%	87%
mentally ill 精神科	75%	74%
mentally handicapped 智障科	87%	87%
overall 總計	84%	85%
average length of stay (days) * 平均住院時間 (日) *		
general (acute and convalescence) 普通科 (急症及康復)	5.6	5.8
infirmery 療養科	128	127
mentally ill 精神科	63	60
mentally handicapped 智障科	838	443
overall 總計	7.5	7.4
<i>ambulatory and outreach services</i> 日間及外展服務		
day inpatient services 日間住院病人服務		
no. of discharges and deaths 出院人次及死亡人數	516,127	542,333
A&E services 急症室服務		
no. of attendances 就診人次	2,253,310	2,241,006
no. of attendances per 1000 population 每千人口的就診人次	315	312
no. of first attendances for 首次就診人次分流		
triage I 第 I 類別	19,593	19,358
triage II 第 II 類別	38,832	41,136
triage III 第 III 類別	660,086	674,841
specialist outpatient services 專科門診服務		
no. of specialist outpatient (clinical) new attendances 專科門診 (臨床) 新症就診人次	682,055	704,512
no. of specialist outpatient (clinical) follow-up attendances 專科門診 (臨床) 舊症覆診人次	6,203,400	6,336,371
total no. of specialist outpatient (clinical) attendances 專科門診 (臨床) 就診總人次	6,885,455	7,040,883

	2012-13	2013-14
primary care services 基層醫療服務		
no. of general outpatient attendances 普通科門診就診人次	5,633,407	5,813,706
no. of family medicine specialist clinic attendances 家庭醫學專科門診就診人次	277,897	287,182
total no. of primary care attendances 基層醫療就診總人次	5,911,304	6,100,888
rehabilitation and palliative care services 康復及紓緩護理服務		
no. of rehabilitation day and palliative care day attendances 康復及紓緩護理日間服務就診人次	80,653	79,483
no. of home visits by community nurses 社康護士家訪次數	843,144	853,821
no. of allied health (community) attendances 專職醫療(社區)就診人次	31,850	32,141
no. of allied health (outpatient) attendances 專職醫療(門診)就診人次	2,268,187	2,329,162
geriatric services 老人科服務		
no. of outreach attendances 接受外展服務人次	620,068	633,416
no. of geriatric elderly persons assessed for infirmary care service 接受療養服務評核的長者人數	1,723	1,701
no. of geriatric day attendances 老人科日間醫院就診人次	139,585	137,695
no. of Visiting Medical Officer attendances 接受到診醫生治療人次	111,529	116,439
psychiatric services 精神科服務		
no. of psychiatric outreach attendances 接受精神科外展服務人次	238,796	260,146
no. of psychiatric day hospital attendances 精神科日間醫院就診人次	219,069	215,375
no. of psychogeriatric outreach attendances 接受老人精神科外展服務人次	96,437	97,995
(III) Quality of services 服務質素		
no. of hospital deaths per 1000 population ^ 每千人口中病人在醫院死亡人數 ^	3.2	3.3
unplanned readmission rate within 28 days for general in-patients(%) 普通科住院病人在出院後 28 天內未經預約再入院率(百分比)	10.2%	10.5 %

	2012-13	2013-14
(IV) Cost of services 服務成本		
cost distribution 成本分布		
cost distribution by service types (%) 按服務類別劃分的成本分布百分率 (%)		
inpatient 住院服務	54.8	54.7
ambulatory and outreach 日間及外展服務	45.2	45.3
cost by service types per 1 000 population (HK\$Mn) 每千人口按服務類別劃分的服務成本(港幣百萬元)		
inpatient 住院服務	3.4	3.6
ambulatory and outreach 日間及外展服務	2.8	3.0
cost of services for persons aged 65 or above 65歲或以上人士的服務成本		
share of cost of services (%) 服務所佔總成本的百分率 (%)	45.5	46.0
cost of services per 1 000 population (HK\$Mn) 每千人口的服務成本(港幣百萬元)	20.6	21.3
unit costs 單位成本		
inpatient services 住院服務		
cost per inpatient discharged (HK\$) 每名出院病人的成本(港元)		
general (acute and convalescent) 普通科(急症及康復)	21,140	22,610
infirmary 療養科	204,200	213,800
mentally ill 精神科	122,570	124,400
mentally handicapped 智障科	445,090	481,240
cost per patient day (HK\$) 病人每日成本(港元)		
general (acute and convalescent) 普通科(急症及康復)	4,180	4,330
infirmary 療養科	1,360	1,400
mentally ill 精神科	2,150	2,270
mentally handicapped 智障科	1,220	1,290
ambulatory and outreach services 日間及外展服務		
cost per A&E attendance (HK\$) 急症室每次診症的成本(港元)	935	1,040
cost per specialist outpatient attendance (HK\$) 專科門診每次診症的成本(港元)	1,050	1,080
cost per general outpatient attendance (HK\$) 普通科門診每次診症的成本(港元)	360	385
cost per family medicine specialist clinic attendance (HK\$) 家庭醫學專科門診每次診症的成本(港元)	975	1,010
cost per outreach visit by community nurse (HK\$) 社康護士每次外展服務的成本(港元)	425	450
cost per psychiatric outreach attendance (HK\$) 精神科外展服務每次的成本(港元)	1,350	1,350
cost per geriatric day attendance (HK\$) 老人科日間醫院每次服務的成本(港元)	1,730	1,840
fee waivers ~ 收費減免 ~		
percentage of Comprehensive Social Security Assistance (CSSA) fee waiver (%) 綜合社會保障援助(綜援)收費減免百分率 (%)	20.3	20.2
percentage of non-CSSA fee waiver (%) 非綜援收費減免百分率 (%)	4.2	4.8

Notes:

- * Derived by dividing the sum of length of stay of inpatients by the corresponding number of inpatients discharged and treated.
- ^ Refers to the standardised mortality rate covering inpatient and day patient deaths in Hospital Authority hospitals. It is derived by applying the age-specific mortality rate in the Hospital Authority in a particular year to a "standard" population.
- ~ Refers to the amount waived as percentage to total charge.

註:

- * 按住院病人住院時間總數除以相對的住院病人出院及接受治療人數計算。
- ^ 指涵蓋醫管局轄下醫院住院及日間病人死亡人數的標準死亡率。有關數字是將醫管局某一年度按年齡分類的死亡率，套用於「標準」人口而計算出來的。
- ~ 指減免款額佔總收費的百分率。

Statistics on Number of Beds, Inpatient, Accident & Emergency and Outpatient Services in 2013-14

2013-14 年度病床數目、住院服務、急症室服務及門診服務統計數字

Institution 機構	No. of hospital beds (as at 31 March 2014) ² 醫院病床數目 (截至 2014 年 3 月 31 日) ²	Total IP & DP discharges and deaths 住院及日間住院 病人出院人次及 死亡人數	Inpatient bed occupancy rate (%) 住院病人 病床住用率 (%)	Inpatient average length of stay (days) 住院病人 平均住院時間 (日)	Total A&E attendances 急症室 總求診人次	Total SOP (clinical) attendances ^{3,4} 專科門診 (臨床) 就診總人次 ^{3,4}	Family Medicine Specialist Clinic attendances ³ 家庭醫學 專科門診 就診人次 ³	Total Allied Health (Outpatient) attendances ^{3,5} 專職醫療 (門診) 就診 總人次 ^{3,5}	General Outpatient attendances ^{3,6} 普通科門診 就診人次 ^{3,6}
	Hong Kong East Cluster 港島東醫院聯網								
Cheshire Home, Chung Hom Kok 春磡角慈氏護養院	240	298	83.0	166.7	-	-	-	156	-
Pamela Youde Nethersole Eastern Hospital 東區尤德夫人那打素醫院	1,633	138,724	86.2	5.6	152,332	560,842	58,154	125,292	393,573
Ruttonjee Hospital and Tang Shiu Kin Hospital 律敦治醫院及鄧肇堅醫院	633	26,379	85.8	6.8	80,806	126,609	10,446	92,108	138,483
St John Hospital 長洲醫院	87	3,184	64.4	5.3	10,712	81	-	7,026	32,643
Tung Wah Eastern Hospital 東華東院	278	8,757	85.5	13.7	-	104,476	-	28,776	23,254
Wong Chuk Hang Hospital 黃竹坑醫院	160	158	93.0	325.4	-	-	-	-	-
Sub-total 小計	3,031	177,500	86.0	7.1	243,850	792,008	68,600	253,358	587,953
Hong Kong West Cluster 港島西醫院聯網									
The Duchess of Kent Children's Hospital at Sandy Bay 大口環根德公爵夫人兒童醫院	133	3,290	52.7	8.7	-	20,182	-	27,171	-
Tung Wah Group of Hospitals Fung Yiu King Hospital 東華三院馮堯敬醫院	272	3,241	69.1	17.3	-	458	-	493	-
Grantham Hospital 葛量洪醫院	372	12,934	68.0	11.7	-	37,708	-	2,828	-
MacLehose Medical Rehabilitation Centre 麥理浩復康院	110	1,104	60.4	21.5	-	324	-	2,590	-
Queen Mary Hospital 瑪麗醫院	1,702	139,396	76.5	4.6	131,577	718,348	21,151	143,637	357,316
Tung Wah Hospital 東華醫院	550	25,864	80.1	14.1	-	45,781	-	5,706	32,781
Tsan Yuk Hospital 贊育醫院	3	178	-	-	-	21,223	-	5,031	-
Sub-total 小計	3,142	186,007	73.6	6.4	131,577	844,024	21,151	187,456	390,097
Kowloon Central Cluster 九龍中醫院聯網									
Hong Kong Buddhist Hospital 香港佛教醫院	324	7,526	83.2	17.9	-	12,058	-	13,863	46,944
Hong Kong Eye Hospital 香港眼科醫院	45	8,221	43.6	5.0	-	224,533	-	19,450	-
Kowloon Hospital 九龍醫院	1,335	15,589	84.0	26.5	-	83,425	-	144,221	-
Queen Elizabeth Hospital 伊利沙伯醫院	1,844	171,257	92.3	5.4	195,280	696,622	7,105	214,228	518,481
Rehabaid Centre ¹ 復康專科及資源中心 ¹	-	-	-	-	-	235	-	22,743	-
Sub-total 小計	3,548	202,593	87.9	8.4	195,280	1,016,873	7,105	414,505	565,425

Institution 機構	No. of hospital beds (as at 31 March 2014) ² 醫院病床數目 (截至 2014 年 3 月 31 日) ²	Total IP & DP discharges and deaths 住院及日間住院 病人出院人次及 死亡人數	Inpatient bed occupancy rate (%) 住院病人 病床住用率 (%)	Inpatient average length of stay (days) 住院病人 平均住院時間 (日)	Total A&E attendances 總求診人次	Total SOP (clinical) attendances ^{3,4} 專科門診 (臨床) 就診總人次 ^{3,4}	Family Medicine Specialist Clinic attendances ³ 家庭醫學 專科門診 就診人次 ³	Total Allied Health (Outpatient) attendances ^{3,5} 專職醫療 (門診) 就診 總人次 ^{3,5}	General Outpatient attendances ^{3,6} 普通科門診 就診人次 ^{3,6}
	Kowloon East Cluster 九龍東醫院聯網								
Haven of Hope Hospital 靈實醫院	461	6,394	88.2	22.2	-	9,359	-	5,026	-
Tseung Kwan O Hospital 將軍澳醫院	623	49,503	93.9	5.0	135,270	270,855	252	111,278	319,023
United Christian Hospital 基督教聯合醫院	1,403	112,133	85.4	4.8	188,433	486,783	55,422	214,496	602,639
Sub-total 小計	2,487	168,030	88.0	5.7	323,703	766,997	55,674	330,800	921,662
Kowloon West Cluster 九龍西醫院聯網									
Caritas Medical Centre 明愛醫院	1,203	55,651	86.8	7.2	136,813	356,775	1,252	70,651	283,847
Kwai Chung Hospital 葵涌醫院	920	4,217	76.7	62.1	-	218,575	-	31,246	-
Kwong Wah Hospital 廣華醫院	1,206	94,783	76.7	4.4	140,983	354,146	2,626	165,129	208,347
North Lantau Hospital ⁷ 北大嶼山醫院 ⁷	-	-	-	-	26,931	358	158	7,817	29,580
Our Lady of Maryknoll Hospital 聖母醫院	236	10,230	65.0	8.2	-	65,846	1,007	33,690	424,552
Princess Margaret Hospital 瑪嘉烈醫院	1,753	142,650	97.1	5.4	149,645	428,713	13,349	108,799	393,991
Tung Wah Group of Hospitals Wong Tai Sin Hospital 東華三院黃大仙醫院	511	7,882	90.6	25.9	-	-	-	900	-
Yan Chai Hospital 仁濟醫院	800	55,173	82.0	4.4	140,713	210,089	2,655	85,492	262,765
Sub-total 小計	6,629	370,586	84.5	6.7	595,085	1,634,502	21,047	503,724	1,603,082
New Territories East Cluster 新界東醫院聯網									
Alice Ho Miu Ling Nethersole Hospital 雅麗氏何妙齡那打素醫院	536	53,273	86.7	4.4	136,913	236,136	4,806	88,767	237,450
Bradbury Hospice 白普理寧養中心	26	637	90.8	13.7	-	6	-	886	-
Cheshire Home, Shatin 沙田慈氏護養院	304	152	71.2	599.0	-	-	-	573	-
North District Hospital 北區醫院	589	42,642	96.9	5.1	112,777	170,144	5,046	61,683	264,526
Prince of Wales Hospital 威爾斯親王醫院	1,518	146,554	86.2	5.0	144,581	691,926	49,906	178,022	439,638
Shatin Hospital 沙田醫院	553	9,410	92.0	18.3	-	553	-	979	-
Tai Po Hospital 大埔醫院	992	9,780	83.3	25.5	-	374	-	441	-
Sub-total 小計	4,518	262,448	86.7	7.4	394,271	1,099,139	59,758	331,351	941,614
New Territories West Cluster 新界西醫院聯網									
Castle Peak Hospital 青山醫院	1,156	2,753	68.3	143.7	-	139,153	-	23,813	-
Pok Oi Hospital 博愛醫院	567	39,451	94.2	6.0	131,012	91,750	32,123	63,000	-
Siu Lam Hospital 小欖醫院	500	454	95.8	463.3	-	-	-	-	-
Tuen Mun Hospital 屯門醫院	1,862	159,509	98.0	5.6	226,228	656,437	21,724	221,155	803,873
Sub-total 小計	4,085	202,167	88.1	10.0	357,240	887,340	53,847	307,968	803,873
GRAND TOTAL 總計	27,440	1,569,331	85.2	7.4	2,241,006	7,040,883	287,182	2,329,162	5,813,706

Notes:

1. Rehabaid Centre and Hong Kong Red Cross Blood Transfusion Service are Hospital Authority institutions with specific functions but have no hospital bed.
2. Number of hospital beds as at 31 March 2014 is based on the Annual Survey on Hospital Beds in Public Hospitals 2013/14.
3. Outpatient attendances for different clinics are grouped under respective hospital management.
4. Specialist Outpatient (SOP) (clinical) attendances include attendances from nurse clinics in SOP setting.
5. Total Allied Health (Outpatient) attendances exclude follow-up consultations provided by the Medical Social Service Department and "joint clinic" doctor consultations provided by the Optometry and Orthoptics Department.
6. General Outpatient (GOP) attendances include attendances for doctor consultations, attendances from nurse clinics in GOP setting and attendances in related healthcare reform initiative programmes in primary care.
7. North Lantau Hospital has commenced patient services in phases since 24 September 2013.

Data prepared in June 2014.

Abbreviations:

- IP — Inpatient
DP — Day Patient
A&E — Accident & Emergency
SOP — Specialist Outpatient

註：

1. 復康專科及資源中心和香港紅十字會輸血服務中心屬醫院管理局機構，各有特定職能，兩間中心均不設病床。
2. 2014年3月31日的醫院病床數目來自2013-14年度的公立醫院病床數目調查。
3. 各診所的門診就診人次均歸入所屬醫院之下。
4. 專科門診(臨床)就診總人次包括專科護士診所的就診人次。
5. 專職醫療(門診)就診總人次不包括醫務社會工作部的跟進個案和視光及視覺矯正部的醫生「匯診」個案。
6. 普通科門診就診人次包括由醫生診視的就診人次、普通科護士診所的就診人次及醫療改革服務計劃內的基層醫療服務就診人次。
7. 北大嶼山醫院自2013年9月24日起分階段開始投入服務。

資料於2014年6月擬備。

Statistics on Community and Rehabilitation Services in 2013-14 2013-14 年度社康及康復服務統計數字

Institution 機構	Home visits by community nurses 社康 護士家訪次數	Psychiatric outreach attendances ¹ 接受精神科 外展服務人次 ¹	Psycho- geriatric outreach attendances ² 接受老人精神科 外展服務人次 ²	Community Geriatric Assessment Service ³ 社區老人 評核服務量 ³	Visiting Medical Officer attendances ⁴ 接受到診醫生 治療人次 ⁴	Allied Health (Community) attendances ⁵ 專職醫療 (社區) 就診人次 ⁵	Rehabilitation day & palliative care day attendances 康復及舒緩 護理日間 服務就診人次	Geriatric day hospital attendances ⁶ 老人科 日間醫院 就診人次 ⁶	Psychiatric day hospital attendances 精神科 日間醫院 就診人次
Hong Kong East Cluster 港島東醫院聯網									
Cheshire Home, Chung Hom Kok 春磡角慈氏護養院	-	-	-	-	-	44	-	-	-
Pamela Youde Nethersole Eastern Hospital 東區尤德夫人那打素醫院	98,512	23,503	11,144	-	-	776	269	16,275	30,209
Ruttonjee Hospital and Tang Shiu Kin Hospital 律敦治醫院及鄧肇堅醫院	-	-	-	122,329	22,281	1,793	4,943	18,308	-
St John Hospital 長洲醫院	4,868	-	-	-	-	3	-	-	-
Tung Wah Eastern Hospital 東華東院	-	-	-	-	-	83	28,627	-	-
Wong Chuk Hang Hospital 黃竹坑醫院	-	-	-	-	-	8	-	2,307	-
Sub-total 小計	103,380	23,503	11,144	122,329	22,281	2,707	33,839	36,890	30,209
Hong Kong West Cluster 港島西醫院聯網									
The Duchess of Kent Children's Hospital at Sandy Bay 大口環根德公爵夫人兒童醫院	-	-	-	-	-	6	-	-	-
Tung Wah Group of Hospitals Fung Yiu King Hospital 東華三院馮堯敬醫院	-	-	-	39,530	11,458	1,687	-	5,779	-
Grantham Hospital 葛量洪醫院	-	-	-	-	-	182	4,338	-	-
Maclehose Medical Rehabilitation Centre 麥理浩復康院	-	-	-	-	-	67	13,373	-	-
Queen Mary Hospital 瑪麗醫院	57,877	19,129	13,760	-	-	1,026	-	-	18,143
Tung Wah Hospital 東華醫院	-	-	-	-	-	225	7,790	6,101	-
Sub-total 小計	57,877	19,129	13,760	39,530	11,458	3,193	25,501	11,880	18,143
Kowloon Central Cluster 九龍中醫院聯網									
Hong Kong Buddhist Hospital 香港佛教醫院	-	-	-	-	-	147	2,258	-	-
Kowloon Hospital 九龍醫院	68,594	18,153	8,734	39,251	5,250	1,688	824	2,473	10,334
Queen Elizabeth Hospital 伊利沙伯醫院	-	-	-	31,094	6,767	1,481	-	10,390	-
Rehabaid Centre 復康專科及資源中心	-	-	-	-	-	890	-	-	-
Sub-total 小計	68,594	18,153	8,734	70,345	12,017	4,206	3,082	12,863	10,334

Institution 機構	Home visits by community nurses 社康 護士家訪次數	Psychiatric outreach attendances ¹ 接受精神科 外展服務人次 ¹	Psycho- geriatric outreach attendances ² 接受老人精神科 外展服務人次 ²	Community Geriatric Assessment Service ³ 社區老人 評核服務量 ³	Visiting Medical Officer attendances ⁴ 接受到診醫生 治療人次 ⁴	Allied Health (Community) attendances ⁵ 專職醫療 (社區) 就診人次 ⁵	Rehabilitation day & palliative care day attendances 康復及紓緩 護理日間 服務就診人次	Geriatric day hospital attendances ⁶ 老人科 日間醫院 就診人次 ⁶	Psychiatric day hospital attendances 精神科 日間醫院 就診人次
Kowloon East Cluster 九龍東醫院聯網									
Haven of Hope Hospital 靈實醫院	30,725	-	-	5,924	1,743	575	1,223	4,834	-
Tsang Kwan O Hospital 將軍澳醫院	-	-	-	-	-	94	-	-	-
United Christian Hospital 基督教聯合醫院	133,546	29,782	10,092	34,300	10,754	1,224	2,812	19,834	31,516
Sub-total 小計	164,271	29,782	10,092	40,224	12,497	1,893	4,035	24,668	31,516
Kowloon West Cluster 九龍西醫院聯網									
Caritas Medical Centre 明愛醫院	78,411	-	-	42,001	4,443	113	1,204	13,462	-
Kwai Chung Hospital 葵涌醫院	-	74,051	27,391	-	-	2,777	-	-	62,859
Kwong Wah Hospital 廣華醫院	37,927	-	-	46,698	12,411	991	-	8,897	-
North Lantau Hospital ⁷ 北大嶼山醫院 ⁷	-	-	-	897	-	14	-	-	-
Our Lady of Maryknoll Hospital 聖母醫院	44,928	-	-	19,076	-	148	984	-	-
Princess Margaret Hospital 瑪嘉烈醫院	90,639	-	-	40,678	5,482	855	959	13,819	-
Tung Wah Group of Hospitals Wong Tai Sin Hospital 東華三院黃大仙醫院	-	-	-	-	-	71	-	7,697	-
Yan Chai Hospital 仁濟醫院	-	-	-	41,082	6,158	255	-	4,012	-
Sub-total 小計	251,905	74,051	27,391	190,432	28,494	5,224	3,147	47,887	62,859
New Territories East Cluster 新界東醫院聯網									
Alice Ho Miu Ling Nethersole Hospital 雅麗氏何妙齡那打素醫院	36,325	-	872	27,207	7,044	2,486	246	10,672	8,656
Bradbury Hospice 白普理寧養中心	-	-	-	-	-	127	317	-	-
Cheshire Home, Shatin 沙田慈氏護養院	-	-	-	-	-	4	-	-	-
North District Hospital 北區醫院	36,246	10,697	7,216	28,822	6,816	3,266	298	9,972	11,926
Prince of Wales Hospital 威爾斯親王醫院	54,341	-	-	21,584	8,292	4,291	-	-	-
Shatin Hospital 沙田醫院	-	20,381	5,879	-	-	117	5,790	13,868	17,079
Tai Po Hospital 大埔醫院	-	4,766	241	-	-	11	-	-	7,064
Sub-total 小計	126,912	35,844	14,208	77,613	22,152	10,302	6,651	34,512	44,725
New Territories West Cluster 新界西醫院聯網									
Castle Peak Hospital 青山醫院	-	59,684	12,666	-	-	850	-	-	12,156
Pok Oi Hospital 博愛醫院	-	-	-	2,441	-	497	-	-	-
Tuen Mun Hospital 屯門醫院	80,882	-	-	92,203	7,540	3,269	3,228	13,995	5,433
Sub-total 小計	80,882	59,684	12,666	94,644	7,540	4,616	3,228	13,995	17,589
GRAND TOTAL 總計	853,821	260,146	97,995	635,117	116,439	32,141	79,483	182,695	215,375

Notes:

1. Psychiatric outreach attendances refer to total number of outreach attendances and home visits. It includes Recovery Support Program, Personalized Care Program for patients with Severe Mental Illness (SMI) and services provided by Intensive Care Team.
2. Psychogeriatric outreach attendances refer to total number of outreach attendances, home visits and consultation-liaison attendances.
3. For Community Geriatric Assessment Service, the activity refers to total number of outreach attendances and geriatric elderly persons assessed for infirmary care service.
4. Visiting Medical Officer attendances refer to the attendances receiving services provided to elderly persons living in Resident Care Homes for the Elderly under the Visiting Medical Officers Scheme introduced in 2003/04.
5. Allied Health (Community) attendances exclude follow-up consultations provided by the Medical Social Service Department.
6. Geriatric day hospital attendances include attendances in Integrated Discharge Support Program (IDSP).
7. North Lantau Hospital has commenced patient services in phases since 24 September 2013.

The activity performed in different centers and teams are grouped under respective hospital management.

Data prepared in June 2014

註：

1. 指接受相關外展服務的人次及家訪次數的總和，並包括康復支援計劃、嚴重精神病患者個人化護理計劃及積極護理團隊提供的服務。
2. 指接受相關外展服務的人次、家訪次數及諮詢會診人次的總和。
3. 指接受相關外展服務的人次及接受療養服務評核的長者人數的總和。
4. 接受到診醫生治療人次指2003-04年度推出的「到診醫生計劃」中為安老院舍長者所提供的到診服務。
5. 專職醫療(社區)就診人次不包括醫務社會工作部的跟進個案。
6. 老人科日間醫院就診人次包括綜合出院支援服務就診人次。
7. 北大嶼山醫院自2013年9月24日起分階段開始投入服務。

各中心及團隊的服務量均歸入所屬醫院之下。

資料於2014年6月擬備。

Manpower Position – by Cluster and Institution

人手狀況 – 按聯網及機構分類

Institution 機構	No. of Full-time Equivalent (FTE) Staff (as at 31.3.2014) ^{1,2,3} 等同全職人員數目 (2014年3月31日數字) ^{1,2,3}				
	Medical 醫療	Nursing 護理	Allied Health 專職醫療	Others 其他	Total 總計
Hong Kong East Cluster 港島東醫院聯網	605.36	2,443.07	746.21	3,801.20	7,595.84
Cheshire Home, Chung Hom Kok 春磡角慈氏護養院	2.00	56.17	10.00	124.00	192.17
Pamela Youde Nethersole Eastern Hospital 東區尤德夫人那打素醫院	471.59	1,616.43	497.22	2,408.20	4,993.44
Ruttonjee & Tang Shiu Kin Hospitals 律敦治及鄧肇堅醫院 ⁴	85.24	506.03	163.00	714.00	1,468.27
St. John Hospital 長洲醫院	5.31	33.69	8.50	79.00	126.50
Tung Wah Eastern Hospital 東華東院	39.22	180.30	63.49	337.00	620.01
Wong Chuk Hang Hospital 黃竹坑醫院	2.00	50.45	4.00	139.00	195.45
Hong Kong West Cluster 港島西醫院聯網	655.83	2,552.81	838.05	3,395.56	7,442.25
Duchess of Kent Children's Hospital 大口環根德公爵夫人兒童醫院	11.00	65.77	37.80	124.00	238.57
Grantham Hospital 葛量洪醫院	29.00	207.50	50.60	275.00	562.10
MacLehose Medical Rehabilitation Centre 麥理浩復康院	1.21	34.00	27.00	78.00	140.21
Queen Mary Hospital 瑪麗醫院 ⁵	557.95	1,859.97	622.05	2,385.56	5,425.53
TWGHs Fung Yiu King Hospital 東華三院馮堯敬醫院	16.46	76.23	25.60	143.00	261.29
Tung Wah Hospital 東華醫院	40.21	309.34	75.00	390.00	814.55
Kowloon Central Cluster 九龍中醫院聯網	716.59	3,175.24	977.67	4,437.97	9,307.47
HK Red Cross Blood Transfusion Service 香港紅十字會輸血服務中心	6.00	84.62	67.00	248.00	405.62
Hong Kong Buddhist Hospital 香港佛教醫院	11.00	144.00	39.00	174.54	368.54
Hong Kong Eye Hospital 香港眼科醫院	34.92	73.28	18.00	160.02	286.22
Kowloon Hospital 九龍醫院	61.35	751.62	187.67	951.24	1,951.88
Queen Elizabeth Hospital 伊利沙伯醫院	603.32	2,121.72	653.00	2,891.17	6,269.21
Rehabaid Centre 復康專科及資源中心	0.00	0.00	13.00	13.00	26.00
Kowloon East Cluster 九龍東醫院聯網	656.60	2,474.19	685.18	3,144.17	6,960.14
Haven of Hope Hospital 靈實醫院	21.71	274.20	58.64	374.60	729.15
Tseung Kwan O Hospital 將軍澳醫院	162.13	626.94	176.40	719.48	1,684.95
United Christian Hospital 基督教聯合醫院	472.76	1,573.05	450.14	2,050.09	4,546.04

Institution 機構	No. of Full-time Equivalent (FTE) Staff (as at 31.3.2014) ^{1,2,3} 等同全職人員數目 (2014年3月31日數字) ^{1,2,3}				
	Medical 醫療	Nursing 護理	Allied Health 專職醫療	Others 其他	Total 總計
Kowloon West Cluster 九龍西醫院聯網	1,371.79	5,336.66	1,478.81	6,767.89	14,955.15
Caritas Medical Centre 明愛醫院	243.89	811.77	223.50	1,066.54	2,345.70
Kwai Chung Hospital 葵涌醫院	69.49	608.48	110.80	573.37	1,362.14
Kwong Wah Hospital 廣華醫院	341.97	1,180.17	320.97	1,448.38	3,291.49
North Lantau Hospital 北大嶼山醫院	19.00	55.00	48.00	141.00	263.00
Our Lady of Maryknoll Hospital 聖母醫院	77.55	259.48	85.04	363.38	785.45
Princess Margaret Hospital 瑪嘉烈醫院	417.95	1,558.10	477.00	1,990.88	4,443.93
TWGHs Wong Tai Sin Hospital 東華三院黃大仙醫院	23.00	239.62	43.50	301.10	607.22
Yan Chai Hospital 仁濟醫院	178.94	624.04	170.00	883.24	1,856.22
New Territories East Cluster 新界東醫院聯網	950.29	3,706.97	1,018.36	4,881.48	10,557.10
Alice Ho Miu Ling Nethersole Hospital 雅麗氏何妙齡那打素醫院	146.85	550.51	178.36	880.49	1,756.21
Bradbury Hospice 白普理寧養中心	3.02	26.25	5.00	26.00	60.27
Cheshire Home, Shatin 沙田慈氏護養院	2.00	88.57	8.00	134.00	232.57
North District Hospital 北區醫院	172.43	637.05	173.00	777.41	1,759.89
Prince of Wales Hospital 威爾斯親王醫院	541.36	1,743.18	522.00	2,173.05	4,979.59
Shatin Hospital 沙田醫院	42.62	313.35	70.00	409.53	835.50
Tai Po Hospital 大埔醫院	42.00	348.06	62.00	481.00	933.06
New Territories West Cluster 新界西醫院聯網	727.31	3,027.03	796.55	4,391.49	8,942.38
Castle Peak Hospital 青山醫院	77.32	571.05	91.00	650.51	1,389.88
Pok Oi Hospital 博愛醫院	105.83	424.39	118.31	610.00	1,258.53
Siu Lam Hospital 小欖醫院	3.00	129.97	2.00	300.00	434.97
Tuen Mun Hospital 屯門醫院	541.16	1,901.62	585.24	2,830.98	5,859.00
Total 總計	5,683.77	22,715.97	6,540.83	30,819.76	65,760.33

Note:

1. This figure excludes 1846.42 staff in the Hospital Authority Head Office.
2. Manpower on full-time equivalent (FTE) basis includes all full-time & part-time staff in HA's workforce i.e. permanent, contract and temporary.
3. Manpower figures of individual hospitals/institutions include management staff providing hospital and cluster-wide services.
4. Manpower for HK Tuberculosis, Chest & Heart Diseases Association (8 staff) is included in Ruttonjee & Tang Shiu Kin Hospital.
5. Manpower providing services for Tsan Yuk Hospital is included in Queen Mary Hospital.

註：

1. 這數字不包括醫管局總辦事處的1846.42名職員。
2. 人手按「等同全職人員」計，包括醫管局所有全職及兼職的常額、合約及臨時職員。
3. 各醫院人手數目包括負責醫院及聯網整體事務的管理人員。
4. 香港防癆心臟及胸病協會服務的人手(8名職員)已歸入律敦治及鄧肇堅醫院內。
5. 贊育醫院的服務人手已歸入瑪麗醫院。

Manpower Position - by Staff Group

人手狀況－按職員組別分類

	No. of Full-time Equivalent (FTE) Staff 2009-10 - 2013-14 *				
	等同全職人員數目*				
	2009-10	2010-11	2011-12	2012-13	2013-14
Medical 醫療					
Consultant 顧問醫生	590.1	630.5	699.3	729.2	761.3
Senior Medical Officer/Associate Consultant 高級醫生／副顧問醫生	1,241.5	1,295.5	1,504.3	1,639.1	1,732.7
Medical Officer/Resident(excluding Visiting Medical Officer) 醫生／駐院醫生(不包括到訪醫生)	3,147.4	3,109.8	2,945.1	2,875.1	2,866.3
Visiting Medical Officer 到訪醫生	15.6	16.1	16.2	16.2	16.0
Intern 駐院實習醫生	277.0	280.0	275.0	280.0	311.0
Senior Dental Officer/Dental Officer 高級牙科醫生／牙科醫生	6.3	5.3	7.0	6.3	8.1
Medical Total: 醫療人員總計：	5,277.9	5,337.2	5,446.9	5,545.9	5,695.4
Nursing 護理					
Senior Nursing Officer and above 高級護士長或以上	81.0	81.0	127.0	156.4	174.0
Department Operations Manager 部門運作經理	163.0	163.0	168.0	176.0	181.0
<i>General 普通科-</i>					
Ward Manager/Nurse Specialist/Nursing Officer/ Advanced Practice Nurse 病房經理／專科護士／護士長／資深護師	3,161.6	3,283.1	3,525.5	3,759.6	3,978.1
Registered Nurse 註冊護士	11,780.1	11,971.3	12,293.3	12,722.0	13,258.0
Enrolled Nurse 登記護士	2,199.4	2,198.7	2,289.8	2,372.5	2,425.0
Midwife/Others 助產士／其他	28.6	24.6	22.8	19.2	9.1
Student Nurse/Pupil Nurse/Temporary Undergraduate Nursing student 註冊護士學生／登記護士學生／護理學學生	487.0	406.1	447.0	436.9	434.0
<i>Psychiatric 精神科-</i>					
Ward Manager/Nurse Specialist/Nursing Officer/ Advanced Practice Nurse 病房經理／專科護士／護士長／資深護師	415.3	436.3	493.4	510.5	532.5
Registered Nurse 註冊護士	1,067.5	1,058.8	1,024.8	1,085.2	1,153.1
Enrolled Nurse 登記護士	473.8	473.0	508.9	578.0	614.2
Student Nurse/Pupil Nurse 註冊護士學生／登記護士學生	9.0	6.0	0.0	0.0	0.0
Nursing Total: 護理人員總計：	19,866.3	20,101.8	20,900.6	21,816.3	22,759.0

	No. of Full-time Equivalent (FTE) Staff 2009-10 - 2013-14 * 等同全職人員數目*				
	2009-10	2010-11	2011-12	2012-13	2013-14
Allied Health 專職醫療					
Audiology Technician 聽力學技術員	9.0	9.0	7.0	7.0	6.0
Clinical Psychologist 臨床心理學家	92.3	100.3	110.3	134.0	138.8
Dietitian 營養師	92.2	91.9	106.1	117.7	127.7
Dispenser 配藥員	949.0	971.0	996.6	1,055.1	1,128.5
Medical Technologist/Medical Laboratory Technician 醫務化驗師/醫務化驗員	1,148.0	1,175.7	1,221.2	1,270.2	1,310.2
Mould Technologist/Mould Laboratory Technician 製模實驗室技術師/製模實驗室技術員	27.0	27.0	27.0	27.0	26.0
Optometrist 視光師	32.0	42.0	60.0	61.0	67.0
Orthoptist 視覺矯正師	12.0	14.0	13.0	14.4	14.4
Occupational Therapist 職業治療師	531.6	572.6	613.1	672.8	698.0
Pharmacist 藥劑師	375.7	391.7	436.7	487.6	521.7
Physicist 物理學家	56.0	58.0	61.0	68.0	71.0
Physiotherapist 物理治療師	755.0	774.9	813.6	845.6	869.0
Podiatrist 足病治療師	24.0	26.8	31.4	35.2	34.9
Prosthetist-Orthotist 義肢矯形師	107.0	105.0	116.0	123.0	126.0
Diagnostic Radiographer/Radiation Therapist 放射師/放射治療師	898.0	906.7	924.6	947.2	1,001.6
Scientific Officer (Medical) 科學主任(醫務)	65.6	66.9	70.9	75.8	81.8
Speech Therapist 言語治療師	61.0	58.5	68.5	76.5	81.8
Medical Social Worker 醫務社工	210.0	223.9	265.0	281.9	301.5
Dental Technician 牙科技術員	2.0	2.0	2.0	2.0	3.0
Allied Health Total: 專職醫療人員總計：	5,447.4	5,617.8	5,944.0	6,302.0	6,608.8
Care-related Support Staff 護理支援					
Health Care Assistant 健康服務助理	3,283.0	3,087.0	2,878.0	2,630.0	2,395.0
Ward Attendant 病房服務員	537.0	478.0	400.0	342.0	295.0
General Services Assistant/Technical Services Assistant (Care-related)/Theatre Technical Assistant/Patient Care Assistant 支援服務助理/技術服務助理(護理)/ 手術室技術助理/病人服務助理	5,133.2	5,661.2	7,110.8	8,076.3	9,446.7
Care-related Support Staff Total: 護理支援人員總計：	8,953.2	9,226.2	10,388.8	11,048.3	12,136.7
Direct Patient Care Total: 直接病人護理人手總計：	39,544.9	40,283.0	42,680.2	44,712.5	47,199.9

	No. of Full-time Equivalent (FTE) Staff 2009-10 - 2013-14 *				
	等同全職人員數目*				
	2009-10	2010-11	2011-12	2012-13	2013-14
Others 其他					
Chief Executive/Director/Deputy Director/Head 行政總裁/總監/副總監/主管	7.0	6.0	7.0	7.0	7.0
Cluster Chief Executive/Hospital Chief Executive 醫院聯網總監/醫院行政總監	27.0	27.0	27.0	26.0	26.0
Chief Manager/Senior Manager/Executive Manager/ General Manager 總行政經理/高級行政經理/行政經理/總經理	87.6	86.6	89.6	92.0	95.0
Other Professionals/Administrator, Systems Manager, Analyst Programmer etc 其他專業/行政人員、系統經理、系統程序分析編製主任等	1,407.4	1,521.8	1,744.9	1,983.9	2,098.5
Other Supporting Staff - Clerical, Secretarial, Workman, Artisan, Property Attendant etc 其他支援人員—文員、秘書、工人、技工、產業看管員等	16,638.9	16,593.7	16,679.0	17,391.8	18,180.4
Non-direct Patient Care Total: 非直接病人護理人手總計：	18,167.9	18,235.1	18,547.6	19,500.7	20,406.9
HA Total: 醫管局人手總計：	57,712.8	58,518.1	61,227.8	64,213.2	67,606.8

Note:

* Manpower on full-time equivalent (FTE) includes all full-time & part-time staff in HA's workforce i.e. permanent, contract and temporary.

註：

* 人手按「等同全職人員」計，包括醫管局所有全職及兼職的常額、合約及臨時職員。

Resource Utilisation for 2013-14

2013-14 年度資源使用

Clusters 聯網	Recurrent Expenditure¹ for 2013-14 (HK\$Mn) 2013-14 年度經常性開支¹ (港幣百萬元)
Hong Kong East Cluster 港島東醫院聯網	5,053
Hong Kong West Cluster 港島西醫院聯網	5,554
Kowloon Central Cluster 九龍中醫院聯網	6,350
Kowloon East Cluster 九龍東醫院聯網	4,718
Kowloon West Cluster 九龍西醫院聯網	10,297
New Territories East Cluster 新界東醫院聯網	7,505
New Territories West Cluster 新界西醫院聯網	5,890
Hospital Authority Head Office and Others ² 醫院管理局總辦事處及其他 ²	1,831
Total 總計	47,198

Note:

1. Refers to resources utilized under the Government recurrent subvention.
2. Others include resources for hospital services (e.g. intern) and corporate programmes (e.g. insurance premium, legal costs / claims and information technology services, etc) and others.

註：

1. 政府經常性補助的資源使用。
2. 「其他」包括用於醫院服務(如實習醫生)、機構項目(如保險費、法律費用／索償及資訊科技服務等)及其他的資源使用。

Hospital Authority Training and Development Expenditure 醫院管理局職員培訓及發展開支

Cluster 聯網	Training and Development Expenditure for 2013-14 ¹ (HK\$Mn) 2013-14 年度培訓及發展開支 ¹ (港幣百萬元)
Hong Kong East Cluster 港島東醫院聯網	9.1
Hong Kong West Cluster 港島西醫院聯網	9.7
Kowloon Central Cluster 九龍中醫院聯網	8.8
Kowloon East Cluster 九龍東醫院聯網	2.6
Kowloon West Cluster 九龍西醫院聯網	8.4
New Territories East Cluster 新界東醫院聯網	11.5
New Territories West Cluster 新界西醫院聯網	6.8
Hospital Authority Head Office 醫院管理局總辦事處	70.6 ²
Total 總計	127.5

Note:

- Expenditure in providing training and development for HA workforce with items including course/conference fees, passages and travel, scholarships, subsistence allowances, teaching aids and devices, publications, trainer fees, refund of examination fee and other relevant charges.
- A number of corporate-wide training programmes and initiatives are centrally coordinated by Hospital Authority Head Office.

註：

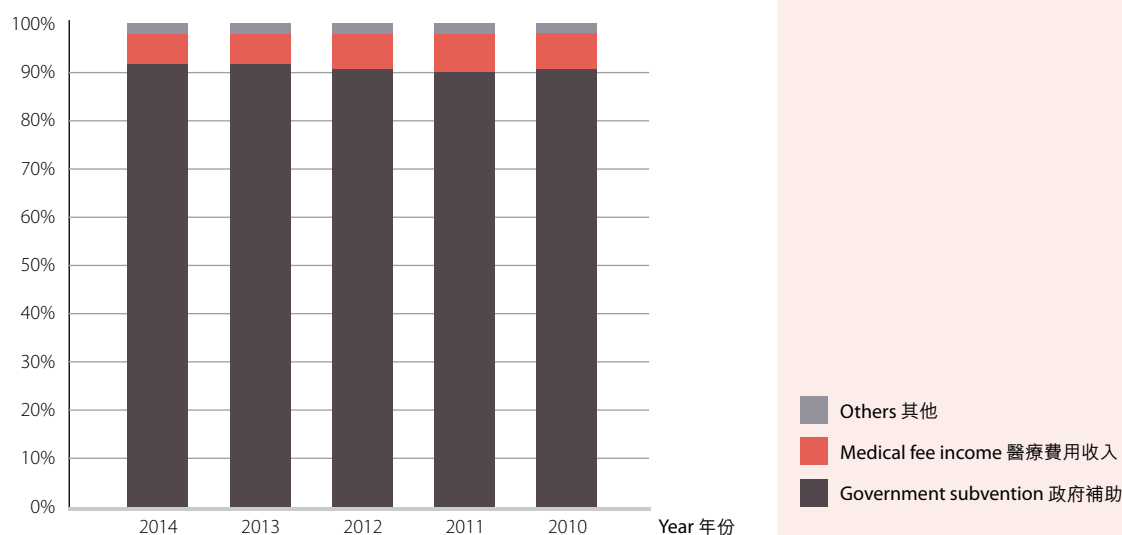
- 為醫管局職員提供培訓及發展的開支，包括學費／會議費用、旅費及交通費、獎學金、膳宿津貼、教材及器具、刊物、導師費用、退還考試費及其他相關開支。
- 醫院管理局總辦事處中央統籌的企業培訓課程及計劃。

Five-Year Financial Highlights 過去五年的財政摘要

Financial Results (for the Year ended 31 March) 財政情況 (截至每年3月31日)

	2014 HK\$Mn 港幣百萬元	2013 HK\$Mn 港幣百萬元	2012 HK\$Mn 港幣百萬元	2011 HK\$Mn 港幣百萬元	2010 HK\$Mn 港幣百萬元
Income 收入					
Government subvention (recurrent and capital) 政府補助 (經常性及資本性)	45,869	43,159	38,348	34,366	33,098
Medical fee income (net of waivers) 醫療費用收入 (扣除豁免)	3,182	2,951	3,030	2,994	2,726
Non-medical fee income 非醫療費用收入	892	775	685	562	478
Designated donations 指定捐贈	183	149	145	143	132
Capital donations 資本捐贈	128	120	109	113	110
	50,254	47,154	42,317	38,178	36,544
Expenditure 支出					
Staff costs 員工成本	(34,459)	(32,290)	(29,616)	(26,904)	(26,680)
Drugs 藥物	(4,941)	(4,479)	(4,069)	(3,639)	(3,209)
Medical supplies and equipment 醫療物品及設備	(2,118)	(1,999)	(1,846)	(1,354)	(1,210)
Other operating expenses (include depreciation and amortisation) 其他營運開支 (包括折舊及攤銷)	(8,071)	(7,288)	(6,289)	(6,039)	(5,473)
	(49,589)	(46,056)	(41,820)	(37,936)	(36,572)
Surplus/(Deficit) for the Year 年度盈餘/(虧損)	665	1,098	497	242	(28)

Income by Source (in % of Total Income) 各類收入來源 (佔總收入百分比)



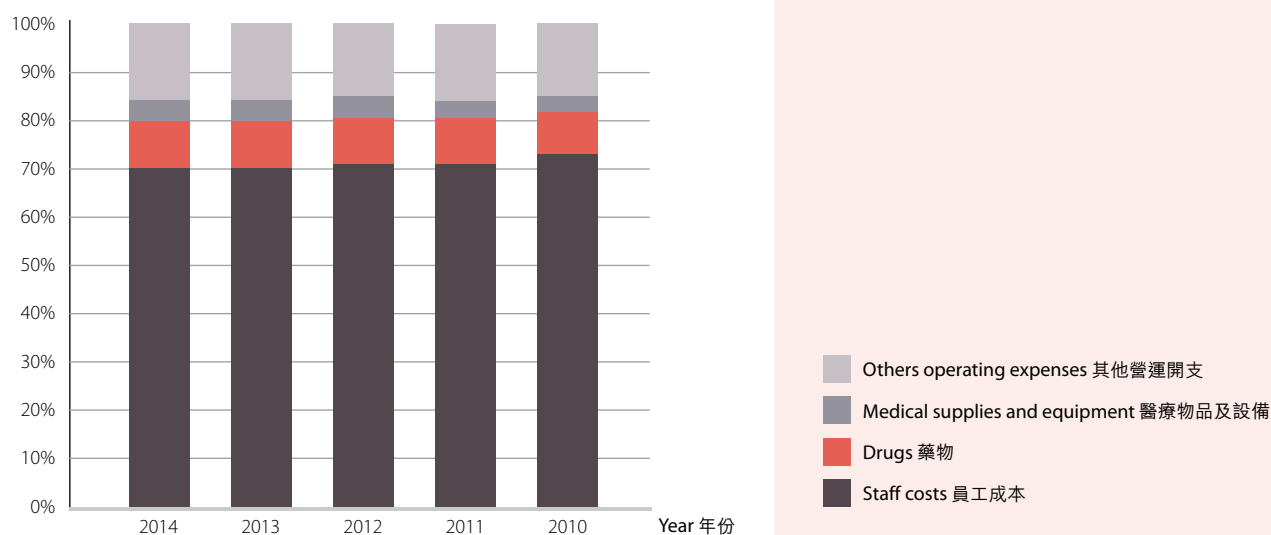
Key Financial Indicators (for the Year ended 31 March)

主要財政指標 (截至每年3月31日)

	2014 HK\$Mn 港幣百萬元	2013 HK\$Mn 港幣百萬元	2012 HK\$Mn 港幣百萬元	2011 HK\$Mn 港幣百萬元	2010 HK\$Mn 港幣百萬元
Medical fee income 醫療費用收入					
Inpatient fees 住院收費	943	939	1,164	1,269	1,174
Outpatient fees 門診收費	1,258	1,218	1,188	1,169	1,128
Itemised charges 分項收費	1,420	1,231	1,134	1,032	887
Other medical fees 其他醫療收費	88	81	71	66	60
	3,709	3,469	3,557	3,536	3,249
Less: Waivers 扣除：豁免	(527)	(518)	(527)	(542)	(523)
Medical fee income (net of waivers) 醫療費用收入 (扣除豁免)	3,182	2,951	3,030	2,994	2,726
Write-off of medical fee income 醫療費用收入註銷開支	36	35	37	29	36

Expenditure by Category
(in % of Total Expenditure)

各類支出 (佔總支出百分比)



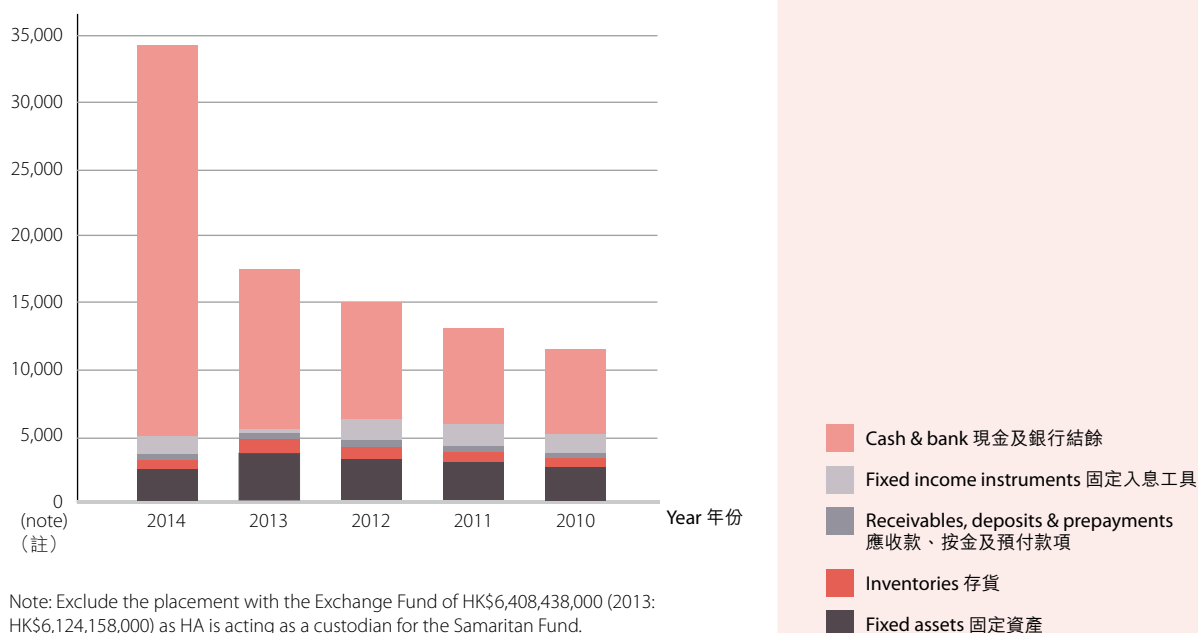
Financial Position (at 31 March)

財政狀況 (於每年3月31日)

	2014 HK\$Mn 港幣百萬元	2013 HK\$Mn 港幣百萬元	2012 HK\$Mn 港幣百萬元	2011 HK\$Mn 港幣百萬元	2010 HK\$Mn 港幣百萬元
Non-current assets 非流動資產	10,615	10,391	4,204	5,636	4,539
Current assets 流動資產	30,508	14,206	11,815	8,425	7,931
Current liabilities 流動負債	(9,607)	(6,918)	(5,929)	(4,795)	(4,007)
Net current assets 流動資產淨值	20,901	7,288	5,886	3,630	3,924
Non-current liabilities 非流動負債	(19,609)	(6,686)	(683)	(658)	(600)
Net assets 資產淨值	11,907	10,993	9,407	8,608	7,863
Capital subventions and Capital donations 資本補助及資本捐贈	4,610	4,383	3,895	3,593	3,090
Designated fund 指定基金	5,077	5,077	5,077	5,077	5,077
Revenue reserve 收入儲備	2,220	1,533	435	(62)	(304)
	11,907	10,993	9,407	8,608	7,863

Total Assets (in HK\$ millions)

總資產 (港幣百萬元)



Note: Exclude the placement with the Exchange Fund of HK\$6,408,438,000 (2013: HK\$6,124,158,000) as HA is acting as a custodian for the Samaritan Fund.

註：不包括醫管局作為撒瑪利亞基金保管人存放於外匯基金港幣6,408,438,000元的款項 (2013: 港幣6,124,158,000元)。

Key Financial Indicators (at 31 March)

主要財政指標(於每年3月31日)

	2014 HK\$Mn 港幣百萬元	2013 HK\$Mn 港幣百萬元	2012 HK\$Mn 港幣百萬元	2011 HK\$Mn 港幣百萬元	2010 HK\$Mn 港幣百萬元
Inventories 存貨					
Drugs 藥物	1,151	1,043	840	713	640
Other medical and general consumables 其他醫療及一般消耗品	218	209	209	180	183
	1,369	1,252	1,049	893	823
Average stock holding period (weeks) 平均存貨儲備時間(星期)					
Drugs 藥物	12.0	12.0	10.8	10.2	10.0
Other medical and general consumables 其他醫療及一般消耗品	8.6	8.7	10.0	9.4	8.2

Analysis of Hospital/Clinic Fees and Charges 醫院／診療所收費分析

The fees and charges for medical services provided by the Hospital Authority are levied in accordance with those stipulated in the Gazette. The fees and charges are recognised as income in the Statement of Income and Expenditure when services are provided. Different charge rates are applicable for Eligible Persons and Non-Eligible Persons. Eligible Persons of public health services are holders of Hong Kong Identity Card issued under the Registration of Persons Ordinance, except those who obtained their Hong Kong Identity Card by virtue of a previous permission to land or remain in Hong Kong granted to them and such permission has expired or ceased to be valid; or children who are Hong Kong residents and under 11 years of age. Persons who are not Eligible Persons are classified as Non-Eligible Persons.

Fees and charges that are uncollectible after all possible attempts have been made are written off in the Statement of Income and Expenditure for the year. In addition, provision is made for outstanding fees and charges. Such provision is assessed based on both the aging as well as the recoverability rate of outstanding hospital fees and charges as at the end of the financial year. The amount of provision for doubtful debts as at 31 March 2014 is HK\$57,900,000 (as at 31 March 2013: HK\$49,094,000).

Fees and charges for public medical services are waived for recipients of Comprehensive Social Security Assistance ("CSSA"). Other patients who have financial difficulties in paying fees and charges for medical services can approach the Medical Social Workers to apply for waivers which may be granted after assessment of the patients' financial condition.

The analysis of the hospital/clinic fees and charges of the Hospital Authority is as follows:

醫院管理局所提供醫療服務的收費，是根據憲報規定的收費表徵收。有關收費於服務提供時，在該年度的收支結算表確認為收入。「符合資格人士」及「非符合資格人士」所需繳付的費用並不相同。使用公立醫療服務的「符合資格人士」是指持有根據《人事登記條例》所發香港身份證的人士，但若該人士是憑藉其已獲入境或逗留准許而獲簽發香港身份證，而該准許已經逾期或不再有效則除外；或身為香港居民的11歲以下兒童。不符合上述資格的人士則為「非符合資格人士」。

經用盡所有可能方法但仍未能收取的費用則會在該年度的收支結算表內註銷，此外，亦會為尚未清繳的費用作呆帳撥備。呆帳撥備是評估財政年度終結時尚未清繳費用的拖欠期及可追收機會後計算出來。截至2014年3月31日為止的呆帳撥備為港幣57,900,000元（截至2013年3月31日則為港幣49,094,000元）。

領取「綜合社會保障援助」(綜援)的人士可獲豁免公立醫療服務收費，其他病人若有經濟困難，可聯絡醫務社工申請費用減免。有關病人在接受經濟狀況評估後，如符合資格，便可獲得費用減免。

醫院管理局醫院／診療所收費的分析如下：

	2013-2014			2012-2013		
	HK\$Mn 港幣百萬元	HK\$Mn 港幣百萬元	(%)	HK\$Mn 港幣百萬元	HK\$Mn 港幣百萬元	(%)
Net hospital/clinic fees and charges 醫院／診療所收費淨額		3,137	(84.6%)		2,906	(83.8%)
Hospital/clinic fees written-off and changes in provision for doubtful debts 註銷的醫院／診療所收費及呆帳撥備變動						
Actual write-off 實際註銷	36			35		
Increase in provision 撥備增加	9			10		
		45	(1.2%)		45	(1.3%)
Waiver of hospital/clinic fees for: 獲減免的醫院／診療所收費：						
Eligible Persons 符合資格人士		475	(12.8%)		479	(13.8%)
Non-Eligible Persons 非符合資格人士		51	(1.4%)		39	(1.1%)
Total hospital/clinic fees and charges 醫院／診療所收費總額		3,708	(100%)		3,469	(100%)