

GVP Express

Seasonal Influenza Vaccination Campaign in PMH

Healthcare worker (HCW) is one of the priority groups recommended to get flu vaccine annually. This year, Infection Control Team (ICT) of Princess Margaret Hospital initiated a campaign for promoting staff vaccination.

It started with a staff forum cum kick-off ceremony on 10 October 2018. The hall was decorated with colorful balloons art work to attract staff attention and participation. Dr. Law C B (COS of M&G) and Dr. W K To (Cluster ICO of KWC) served as role models and took the lead to receive influenza vaccination during the ceremony.



“Getting a flu vaccine is the best way to protect yourself and others from influenza”

Dr. W K To,
 Cluster ICO of KWC

Reminders including promotion flags, posters and banners were presented at “eye-catching” locations within the hospital compound such as traffic entrance, staff main passage and lift lobby. In addition, hospital leaders and frontline staff were invited to formulate some promotion videos for further promulgation within cluster and hospital.

The hospital service pledge of “We will always be by your side, vaccination service is around you” was launched to make the vaccination fast and convenient to staff. Staff can get flu shot at the vaccination booth every Monday to Friday from 11 October 2018 onward, or receive vaccination at the workplace through “Department On-site Vaccination Service” provided by ICT.

The staff vaccination rate in PMH rose by 49.5% as compared to the same period (6th week) of the previous year. The campaign succeeded in raising staff awareness and engaging staff in flu vaccination.

Seasonal Influenza Vaccination Rates among HA Staff

Seasonal influenza vaccination program for HA staff has begun for more than 9 weeks. There are some encouraging results to share with our colleagues. The influenza vaccine uptake rate by HA staff for the first 9 weeks of 2018/19 season is 36%, outperforms previous seasons of 2017/18 (32%), 2016/17 (27%) and 2015/16 (22%).

The cumulative number of injections also reflects an increasing trend (Figure 1). There is 46% increase in the number of injections as compare to the first 9 weeks of 2017/18 season (28,658 in 2018/19 season vs 19,647 in 2017/18 season).

Up to week 9 of current season, among the healthcare worker groups, the influenza vaccine uptake rate is highest in the medical staff group, followed by supporting staff, allied health and nursing (Figure 2).

Seasonal influenza vaccination is effective to protect you, your family and patient from influenza infection. Let’s join hands and support the seasonal influenza vaccination.

Figure 1: Cumulative number of injections for HA staff

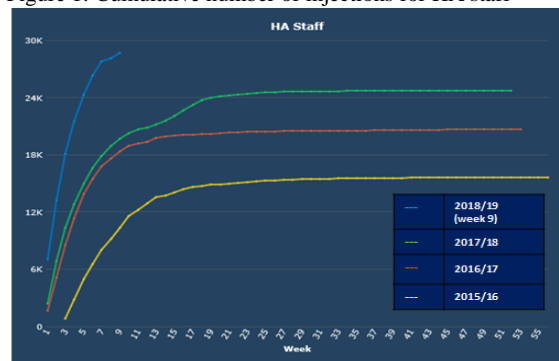
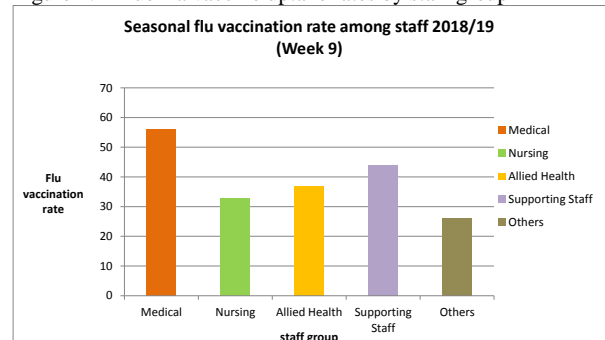


Figure 2: Influenza vaccine uptake rates by staff group



Influenza activity update

In Hong Kong, the overall positive rate of influenza (all types) increased to 6.2% last week and around 70% of positive influenza specimens were influenza A(H1) positive (from PHLSB data). (Figure 3) The weekly influenza A positive rates of different age groups (calculated by lab data of influenza RT-PCR performed by PHLSB for HA patients) have been illustrated in figure 4. The positive rate among the elderly patients (>=65 years old) was still at around 2% whereas the rate of other adult patients (18-64 years old) and paediatric patients have increased to 7.5% and 12.3% respectively. The percentage of A(H1) positive among the influenza A positive results was lower among the elderly patients.

Influenza activity has been increasing in various areas in northern hemisphere, but remained at baseline level or below. We expect the influenza activity in Hong Kong will progressively increase in the coming weeks with influenza A(H1) as the predominant influenza type, especially among the children. While influenza A(H1) virus usually has less impact to the elderly patients, we will monitor if the activity of influenza A(H3) will be particularly active among them.

Table 1: Weekly percentage of A(H1) positive among influenza A positive results by age group

Yr-week	Age group			Overall
	0-17	18-64	>=65	
2018-40	86.5%	76.2%	61.3%	78.6%
2018-41	85.1%	87.5%	56.3%	79.7%
2018-42	93.1%	71.4%	42.9%	75.4%
2018-43	93.5%	60.0%	38.9%	73.8%
2018-44	81.7%	85.7%	43.6%	70.0%
2018-45	84.9%	72.4%	51.1%	70.1%
2018-46	83.6%	87.9%	71.8%	81.2%
2018-47	81.9%	76.9%	73.3%	78.1%
2018-48	79.0%	74.1%	76.8%	77.1%
2018-49	83.2%	74.7%	51.7%	73.7%

Figure 3: Number of positive results and positive rate – Influenza (all types)

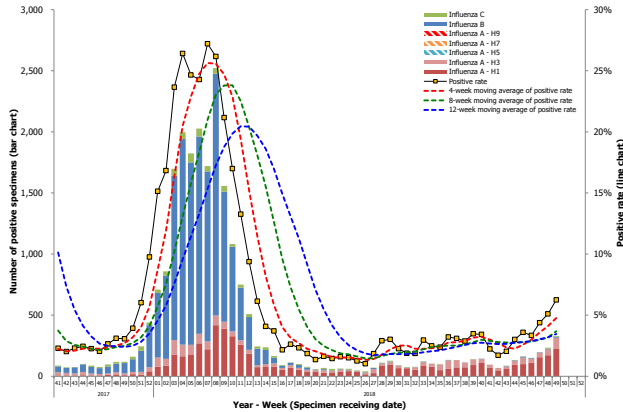
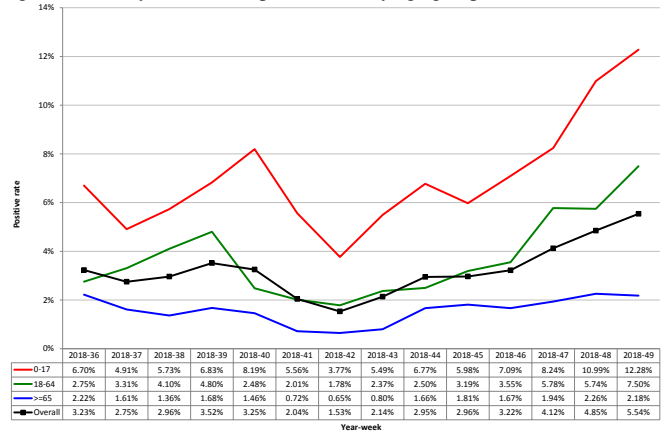


Figure 4: Weekly influenza A positive rate by age group



May your Christmas be filled with marvelously magical moments!

Upcoming Event

Symposium on Prevention of Healthcare-associated Infections in Hospitals and Community Institutions

Date: 17-18 January 2019

Venue: Lecture Theatre of CHP

Organizer: IDCTC, HA/ ICB, CHP

Topics: Evidence-based practices in prevention of healthcare-associated infections:

- Catheter-associated urinary tract infections (CAUTI)
- Catheter-associated blood stream infections (CABSI)
- Surgical site infections (SSI)
- Ventilator-associated pneumonia (VAP)

ICT to Note

Electronic Infection Control (eIC)

A mobile infection control audit via iPad for infection control activities has been developed to facilitate data input, analysis and reporting. Hand hygiene (HH) compliance monitoring is the first core element of the eIC to be rolled out on 1 January 2019.

Infection control nurses (ICNs) will make use of this platform to conduct HH observation. Data will be displayed in a dashboard so as to provide concurrent feedback to clinical wards/unit.

Before rolling out, two identical workshops for ICNs have been arranged to demonstrate the way of using iPad for HH performance monitoring.

